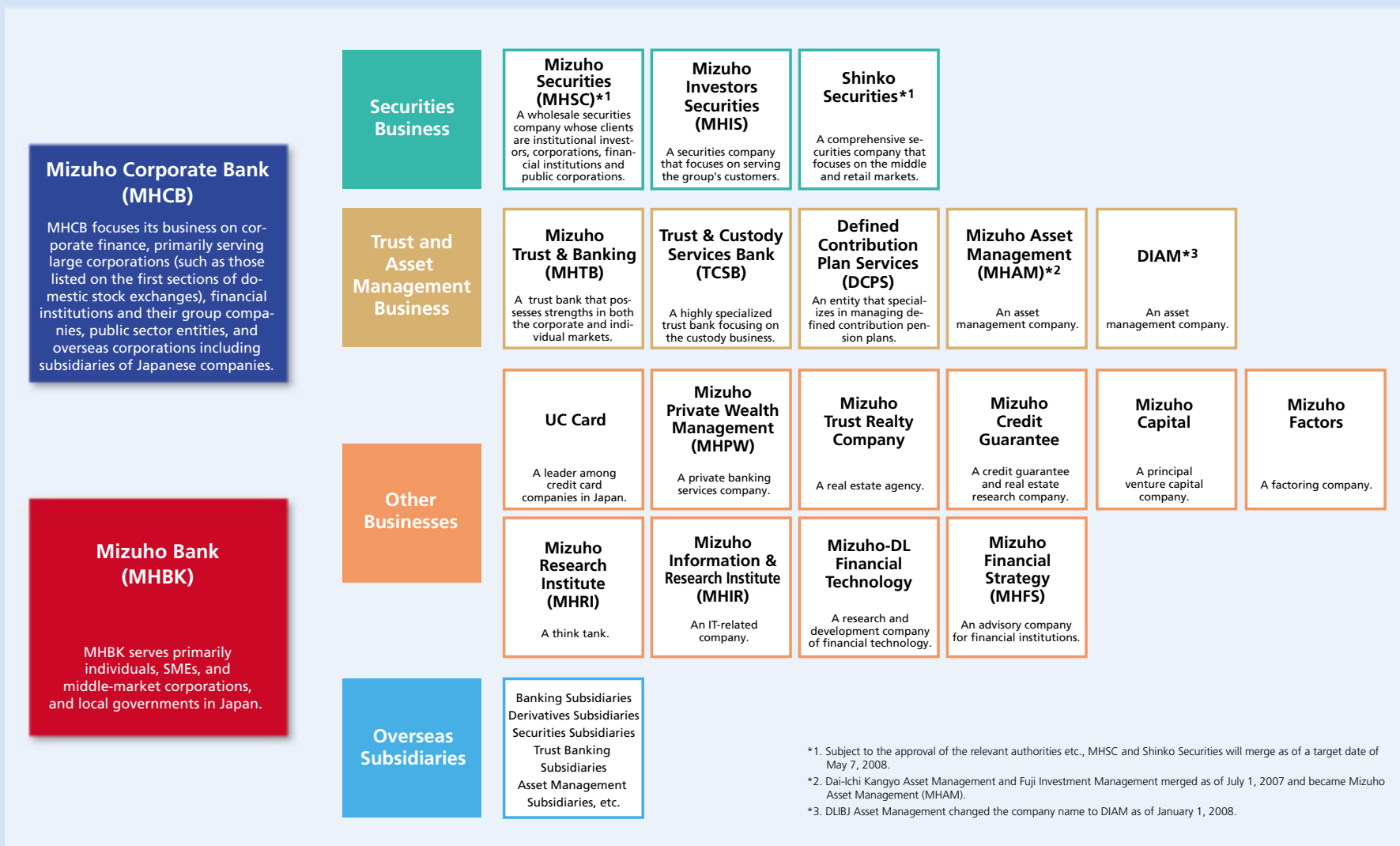


Business Outline

We precisely and swiftly provide products, services and business solutions to meet the diversified financial needs of our customers by actively pursuing group synergies.

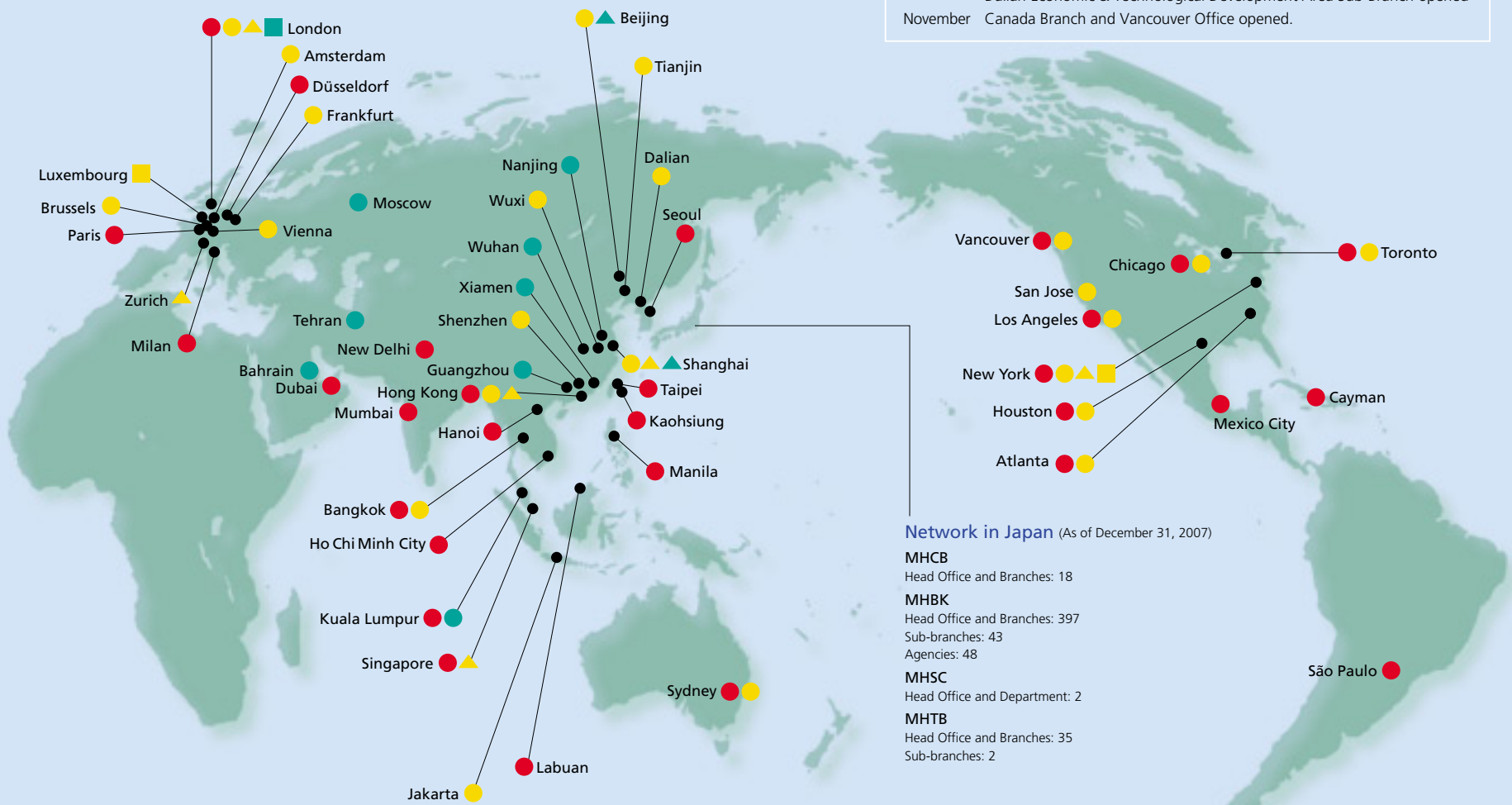


Office Network

We utilize our office network, which covers every prefecture in Japan as well as major overseas cities, to respond to our customers' diversified and globalizing financial needs while supporting the smooth progress of economic activities.

International Network (As of December 31, 2007)

- | | | |
|--|----------------------------------|----------------------------------|
| MHCB | MHSC | MHTB |
| ● Overseas branch or relevant office | ▲ Overseas subsidiary | ■ Overseas subsidiary |
| ● Overseas representative office | ▲ Overseas representative office | ■ Overseas representative office |
| ● Major overseas subsidiary or relevant office | | |



MHCB's Newly Established Offices (April to December 2007)

- | | |
|----------|--|
| April | Milan Branch opened |
| May | Mexico Representative Office commenced business promotion activities |
| June | Mizuho Corporate Bank (China) established.
Mizuho Corporate Bank (USA) established four representative offices in the U.S. (Atlanta, Chicago, Houston, Los Angeles) |
| | Dubai Branch opened |
| July | Mizuho Corporate Bank (China)
Tianjin Branch opened |
| October | Mizuho Corporate Bank (China)
Dalian Economic & Technological Development Area Sub-Branch opened |
| November | Canada Branch and Vancouver Office opened. |

Network in Japan (As of December 31, 2007)

- MHCB**
Head Office and Branches: 18
- MHBK**
Head Office and Branches: 397
Sub-branches: 43
Agencies: 48
- MHSC**
Head Office and Department: 2
- MHTB**
Head Office and Branches: 35
Sub-branches: 2