

CORPORATE INFORMATION

Contents

| | |
|---|------------|
| BOARD OF DIRECTORS AND SENIOR OVERSEERS | 98 |
| STOCK INFORMATION | 99 |
| ORGANIZATION CHART | 100 |
| OVERSEAS OFFICES | 102 |
| <i>The Americas</i> | <i>102</i> |
| <i>Asia and Oceania</i> | <i>104</i> |
| <i>Europe and The Middle East</i> | <i>106</i> |
| DOMESTIC OFFICES AND AFFILIATED COMPANIES | 108 |
| CORPORATE DATA | 109 |

BOARD OF DIRECTORS AND SENIOR OVERSEERS

Chairman of the Board

Toru HASHIMOTO

President & Chief Executive Officer

Yoshiro YAMAMOTO

Deputy Presidents

Tosaku HARADA

Hiroaki ETOH

Toshiyuki OGURA

Senior Managing Director

Mitsuru ANNEN

Managing Directors

Masaaki SATO

Osamu KITA

Isao HIRAIDE

Soichi HIRABAYASHI

Takeshi KOBAYASHI

Atsushi TAKANO

Terunobu MAEDA

Hiroaki SHINODA

Teruhiko IKEDA

Takeshi TAKAHASHI

Directors

Yasutaka HISHIYAMA

Yukio OBARA

Shiro YANAGIHARA

Hideshi IWAI

Seiji SATOMURA

Kenji WATANABE

Yoshinori MURAKAMI

Michio UENO

Tsutomu HAYANO

Kazumi YANAGIHARA

Satoshi KIMURA

Toru ISHIHARA

Fumito ISHIZAKA

Kunioki ISHIBASHI

Takashi SHIRAI

Yoshiaki SUGITA

Minoru ITOSAKA

Hajime SAKUMA

Saburo NISHIURA

Senior Overseers

Minoru TANAKA

Masayuki AMARI

Takeie UKITA

Yoriaki SAKATA

Yuji OSHIMA

Daiyu AOKI

(as of June 26, 1998)

STOCK INFORMATION

Paid-in Capital

¥529,087 million

Number of Authorized Stocks

Common Stock 4,000,000,000 shares

Preferred Stock 100,000,000 shares

Number of Outstanding Stocks

Common Stock 2,897,614,578 shares

Preferred Stock 70,000,000 shares

Number of Stockholders

Common Stock 56,314

Preferred Stock 1

Listings

Tokyo Stock Exchange

Sapporo Stock Exchange

Osaka Securities Exchange

London Stock Exchange

Kyoto Stock Exchange

Paris Stock Exchange

Stockholders' Meeting

General stockholders' periodic meeting is scheduled in June every year at the Bank's headquarters. Apart from that, extraordinary meetings can be held whenever necessary.

Principal Stockholders

Common Stock

The ten principal stockholders of the Bank and their respective stockholdings as of March 31, 1998:

| | Number of Stocks Held (in thousands) | Percentage in Total Stocks Issued (%) |
|---|--|---|
| The Yasuda Mutual Life Insurance Company..... | 141,957 | 4.89 |
| The Dai-ichi Mutual Life Insurance Company..... | 84,639 | 2.92 |
| Nippon Life Insurance Company..... | 79,510 | 2.74 |
| The Yasuda Trust & Banking Co., Ltd.*..... | 72,994 | 2.51 |
| The Yasuda Fire & Marine Insurance Co., Ltd. | 62,115 | 2.14 |
| Nippon Steel Corporation | 50,838 | 1.75 |
| Nihon Cement Co., Ltd. | 45,599 | 1.57 |
| The Mitsui Trust & Banking Co., Ltd. | 43,104 | 1.48 |
| The Nichido Fire & Marine Insurance Co., Ltd..... | 43,057 | 1.48 |
| Kubota, Ltd. | 42,539 | 1.46 |
| Total | 666,356 | 22.99 |

* Regarding the stockholding of the Yasuda Trust & Banking Co., Ltd., such holdings as designated fund trust for separate account investment are included.

Preferred Stock

| | Number of Stocks Held (in thousands) | Percentage in Total Stocks Issued (%) |
|--|--|---|
| FIFB Holding Services (BVI) Ltd.* | 70,000 | 100.00 |

* FIFB Holding Services (BVI) Ltd. is the trustee for Fuji International Finance (Burmuda) Trust.

Board of Directors & Senior Overseers (as of June 26, 1998)

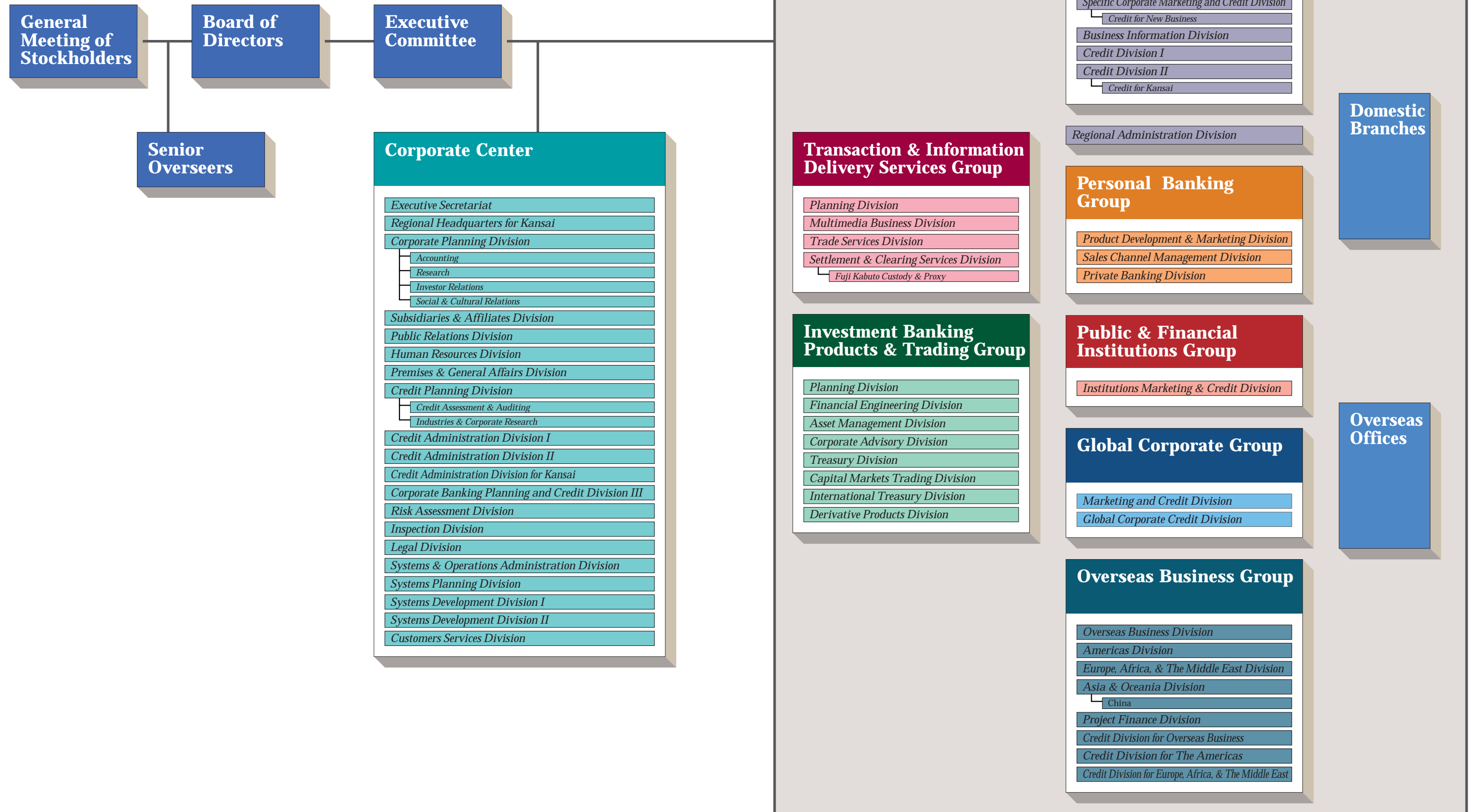
| | Number of Stocks Held (in thousands)* |
|--|---|
|--|---|

| | | |
|---------------------------------|--------------------------|----|
| Chairman of the Board | Shiro Yanagihara..... | 5 |
| Toru Hashimoto | Hideshi Iwai | 7 |
| President & CEO | Seiji Satomura..... | 9 |
| Yoshiro Yamamoto | Kenji Watanabe..... | 7 |
| Deputy Presidents | Yoshinori Murakami | 7 |
| Tosaku Harada | Michio Ueno..... | 9 |
| Hiroaki Etoh | Tsutomu Hayano | 12 |
| Toshiyuki Ogura | Kazumi Yanagihara | 8 |
| Senior Managing Director | Satoshi Kimura | 5 |
| Director | Toru Ishihara..... | 6 |
| Mitsuru Annen | Fumito Ishizaka..... | 7 |
| Managing Directors | Kunioki Ishibashi | 3 |
| Masaaki Sato | Takashi Shirai..... | 6 |
| Osamu Kita | Yoshiaki Sugita | 8 |
| Isao Hiraide | Minoru Itosaka | 4 |
| Soichi Hirabayashi | Hajime Sakuma | 8 |
| Takeshi Kobayashi | Saburo Nishiura | 7 |
| Atsushi Takano..... | Senior Overseers | |
| Terunobu Maeda..... | Minoru Tanaka | 22 |
| Hiroaki Shinoda..... | Masayuki Amari..... | 17 |
| Teruhiko Ikeda..... | Takeie Ukita | 10 |
| Takeshi Takahashi | Yoriaki Sakata | 3 |
| Directors | Yuji Oshima..... | 0 |
| Yasutaka Hishiyama | Daiyu Aoki..... | 40 |
| Yukio Obara | | |

*as of March 31, 1998

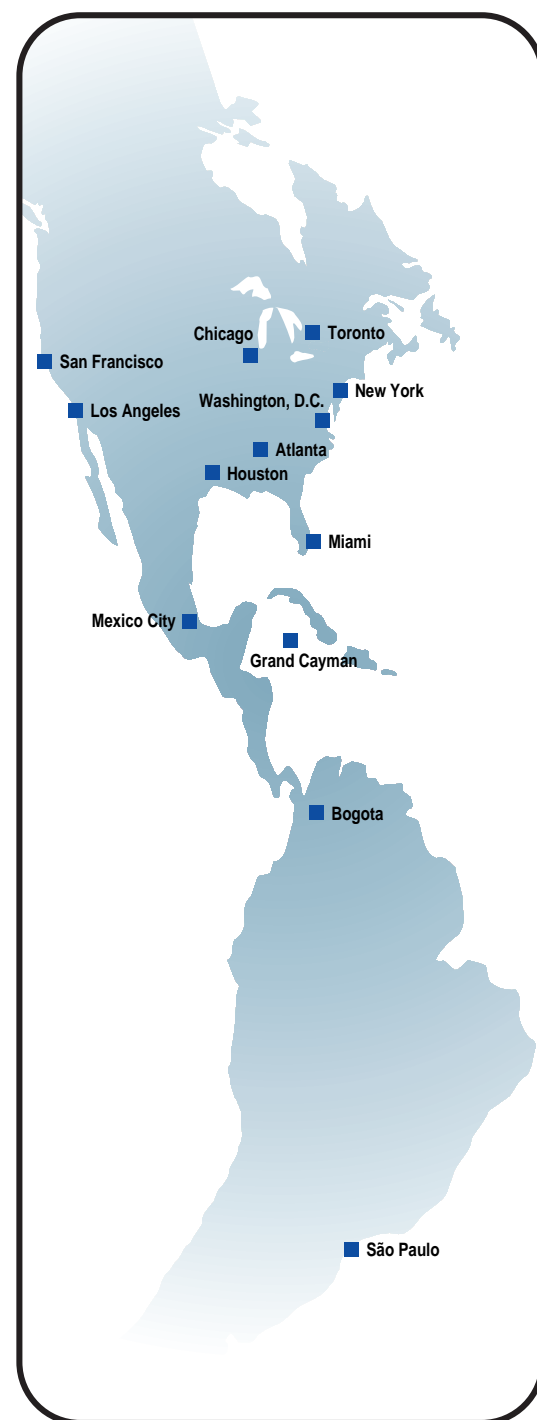
None of the Directors have any interest in any transactions which are or were unusual in their nature or conditions or significant to the business of the Fuji Bank Group and which were effected by the Bank during the current or immediately preceding financial year or which were effected by the Bank during an earlier financial year and remain in any respect outstanding or unperformed.

ORGANIZATION CHART



(★ = Consolidated Subsidiaries)

THE AMERICAS



■ Americas Division

Two World Trade Center,
82nd Floor, New York,
New York 10048, U.S.A.
Phone: 1-212-898-2000
Fax: 1-212-321-9418/9419

Branches, Agencies and Representative Offices

■ Atlanta Agency

Marquis One Tower, Suite 2100,
245 Peachtree Center Avenue, N.E.
Atlanta, Georgia 30303, U.S.A.
Phone: 1-404-653-2100
Fax: 1-404-653-2119
Telex: (910) 250-7122

■ Chicago Branch

225 West Wacker Drive, Suite 2000,
Chicago, Illinois 60606, U.S.A.
Phone: 1-312-621-0500
Fax: 1-312-621-0305
Telex: (230) 284351, 253114

■ Grand Cayman Branch

Roywest House, West Bayroad,
P.O.Box 707, Grand Cayman,
British West Indies

■ Houston Agency

One Houston Center, Suite 4100,
1221 McKinney Street,
Houston, Texas 77010, U.S.A.
Phone: 1-713-759-1800
Fax: 1-713-759-0048
Telex: 790026

■ Los Angeles Agency

333 South Hope Street,
Los Angeles, California 90071, U.S.A.
Phone: 1-213-680-9855
Fax: 1-213-253-4198
Telex: 673336

■ New York Branch

Two World Trade Center,
79th—81st Floors,
New York, New York 10048, U.S.A.
Phone: 1-212-898-2000
Fax: 1-212-321-9407
Telex: 420626, 232440, 23125801

■ San Francisco Agency

International Building, Suite 500,
601 California Street, San Francisco,
California 94108, U.S.A.
Phone: 1-415-362-4740
Fax: 1-415-362-4613
Telex: 176087

■ Colombia Representative Office

Carrera 7 No.71-52, Torre B Piso 9,
Santafe de Bogota, D.C., Colombia

■ Mexico Representative Office

Arquimedes #130, Plaza Arquimedes
Piso 9, Col. Polanco, C.P. 11560
Mexico, D.F. Mexico
Phone: 52-5-282-6601
Fax: 52-5-282-6656
Telex: 1763020

■ Miami Representative Office

First Union Financial Center, Suite 3440,
200 South Biscayne Boulevard,
Miami, Florida 33131, U.S.A.
Phone: 1-305-374-2226
Fax: 1-305-381-8338
Telex: 441267

■ São Paulo Representative Office

Avenida Brigadeiro Luiz Antonio,
2020-10° andar, 01318-911 São Paulo,
Brazil
Phone: 55-11-289-1812
Fax: 55-11-287-7867
Telex: 1123932

■ Washington, D.C. Representative Office

1155 Connecticut Avenue, N.W.
Suite 601,
Washington, D.C. 20036, U.S.A.
Phone: 1-202-467-6660
Fax: 1-202-467-5045
Telex: 496-13628

Subsidiaries

■ Fuji America Holdings, Inc. ★
(Holding company)

500 West Monroe Street,
Chicago, Illinois, 60661, U.S.A.
Phone: 1-312-441-7533
Fax: 1-312-441-7499

■ The Fuji Bank and Trust Company★
(Commercial banking and trust business)

Two World Trade Center,
79th—81st Floors,
New York, New York 10048, U.S.A.
Phone: 1-212-898-2400
Fax: 1-212-321-9649
Telex: 425777

■ Fuji Bank Canada★
(Commercial banking)
Main Office

BCE Place, Suite 2800, Canada Trust
Tower, 161 Bay Street,
P.O. Box 609, Toronto,
Ontario M5J 2S1, Canada
Phone: 1-416-865-1020
Fax: 1-416-865-9618
Telex: 06-22094

■ Fuji Bank International, Inc. ★
(Offshore banking)

International Building,
601 California Street, San Francisco,
California 94108, U.S.A.
Phone: 1-415-362-4740
Fax: 1-415-362-4613
Telex: 176087

■ Fuji Bank (Mexico), S.A. ★
(Commercial banking)

Arquimedes #130, Plaza Arquimedes
Piso 9, Col. Polanco, C.P. 11560
Mexico, D.F. Mexico
Phone: 52-5-282-6643
Fax: 52-5-282-6656/6657
Telex: 1763020

■ Fuji Capital Holdings Inc. ★
(Holding company)

Two World Trade Center, 82nd Floor,
New York, New York 10048, U.S.A.

■ Fuji Capital Markets Corporation★
(Swaps and derivatives services)

Two World Trade Center, 80th Floor,
New York, New York 10048, U.S.A.
Phone: 1-212-898-2657
Fax: 1-212-321-9415
Telex: 425777

■ Fuji JGB Investment Holdings, Inc. ★
(Holding company)

Two World Trade Center,
82nd Floor, New York,
New York 10048, U.S.A.
Phone: 1-212-898-2562
Fax: 1-212-898-2770

■ Fuji JGB Investment L.L.C.★
(Investment company)

(Same address as above)

■ Fujilease Corporation★
(Leasing)

Two World Trade Center,
79th—81st Floors,
New York, New York 10048, U.S.A.
Phone: 1-212-898-2400
Fax: 1-212-321-9649
Telex: 425777

■ Fuji Securities Inc. ★
(Securities trading and dealing)

New York Office
Two World Financial Center
South Tower 26th Floor, New York,
New York 10281, U.S.A.
Phone: 1-212-417-2400
Fax: 1-212-786-3347
Chicago Office
311 South Wacker Drive, Suite 2000,
Chicago, Illinois 60606-6620, U.S.A.
Phone: 1-312-294-8725
Fax: 1-312-294-8721

■ FWI Holdings Inc. ★
(Holding company)

1209 Orange Street, Wilmington,
New Castle, Delaware, U.S.A.

■ Heller Financial, Inc. ★
(Commercial finance)

500 West Monroe Street,
Chicago, Illinois 60661, U.S.A.
Phone: 1-312-441-7000
Fax: 1-312-441-7499
31 offices in U.S.A.

■ Heller International Group, Inc. ★
(Commercial finance)

(Same address as above)
18 countries

■ Heller Financial (Mexico), S.A. de CV★

Monte Elbruz No.124-8 Piso,
Polanco, Mexico D.F. 11550
Phone: 52-5-728-0900
Fax: 52-5-728-0905

Affiliates

■ America do Sul "Leasing" S.A.

Arrendamento Mercantil
(Leasing)
Avenida Paulista, 688-7° andar,
São Paulo, Brazil
Phone: 55-11-283-3288
Telex: 1136790

■ Banco America do Sul S.A.
(Commercial and investment banking)

Avenida Brigadeiro Luiz Antonio, 2020,
São Paulo, Brazil
Phone: 55-11-288-4933
Fax: 55-11-285-4564
Telex: 1121892

■ Cia. de Seguros America do Sul Yasuda
(Insurance)

Avenida Brigadeiro Luiz Antonio,
2020-5° andar, São Paulo, Brazil
Phone: 55-11-285-1411
Fax: 55-11-289-8442
Telex: 11239061411

■ Fuji-Wolfensohn International
(Corporate advisory)

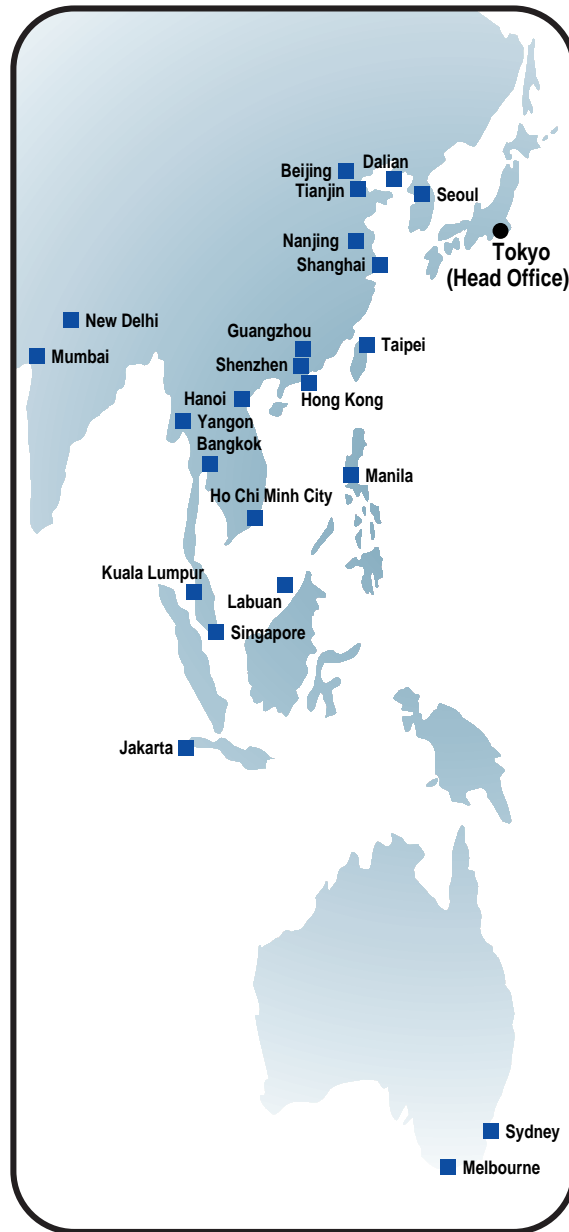
One Bankers Trust Plaza, 130 Liberty
Street, New York, New York 10006,
U.S.A.
Phone: 1-212-250-3400
Fax: 1-212-669-0701

■ Heller-Sud Servicios Financieros S.A.

Maipu 311 Piso 1°, 1006 Buenos Aires,
Argentina
Phone: 54-1-394-0036
Fax: 54-1-394-0064

■ HellerNet-Sud

Augustinas 640, Piso 14 Santiago, Chile
Phone: 56-2-661-4700
Fax: 56-2-661-4794



■ Asia and Oceania Division

1-5-5, Otemachi, Chiyoda-ku
Tokyo, Japan 100-0004
Phone: 81-3-5252-8587
Fax: 81-3-3287-1174

■ Branches and Representative Offices

■ Bangkok International Banking Facility

6th Floor, Q. House Convent Building,
38 Convent Road, Silom, Bangrak,
Bangkok 10500, Thailand
Phone: 66-2-632-1900
Fax: 66-2-632-1919
Telex: 84433 FUJIBKB

■ Dalian Branch

14F, Dalian Senmao Building,
147 Zhongshan Lu, Dalian,
Liaoning Province,
The People's Republic of China
Phone: 86-411-3608348
Fax: 86-411-3608328
Telex: 86247 FJBKD CN

■ Hanoi Branch

Unit 04/05, 5th Floor, International Centre,
17 Ngo Quyen Street, Hanoi, Vietnam
Phone: 84-4-826-6553
Fax: 84-4-826-6665
Telex: 411368 FJBKHN VT

■ Hong Kong Branch

26th Floor, Gloucester Tower, The Landmark,
11 Pedder Street, Central, Hong Kong
Phone: 852-2826-5710
Fax: 852-2810-0048
Telex: 74604 FUJBK HX

■ Labuan Branch

Kuala Lumpur Marketing Office
30th Floor, UBN Tower,
No.10, Jalan, P. Ramlee,
50250 Kuala Lumpur, Malaysia
Phone: 60-3-201-5020
Fax: 60-3-201-5030
Telex: MA 30920 FUJLAK

■ Labuan Office

Level 10 (A) Main Office Tower Financial
Park Labuan, Jalan Merdeka, 87000 Federal
Territory of Labuan, Malaysia
Phone: 60-87-41-7766
Fax: 60-87-41-9766
Telex: MA85062FUJLAB

■ Manila Branch

26th Floor, Citibank Tower, Valero Street
Corner Villar Street, Salcedo Village,
Makati City, Metro Manila, Philippines
Phone: 63-2-848-0001
Fax: 63-2-815-3770
Telex: 45224 FUJI BNKPM

■ Mumbai Branch

Maker Chamber III, 1st Floor,
Jamnalal Bajaj Road, Nariman
Point,
Mumbai, 400021 India
Phone: 91-22-288-6638
Fax: 91-22-288-6640
Telex: 81030 FUJI

■ Seoul Branch

15th Floor, Doosan Building,
101-1, 1-Ka,
Ulji-Ro, Chung-ku, Seoul,
Republic of Korea
Phone: 82-2-311-2000
Fax: 82-2-754-8177
Telex: K 27216

■ Shanghai Branch

7F, Shanghai Senmao
International Building,
101 Yin Cheng East Road,
Pudong New Area, Shanghai,
The People's Republic of China
Phone: 86-21-68411000
Fax: 86-21-68412000
Telex: 30168 FIBSH

■ Shenzhen Branch

21st Floor, Shenzhen International
Financial Building, 23 Jian She Lu,
Shenzhen, Guangdong Province,
The People's Republic of China
Phone: 86-755-2221918
Fax: 86-755-2225390
Telex: 420304

■ Singapore Branch

1 Raffles Place, #20-00, OUB
Centre, Singapore 048616
Phone: 65-5343500
Fax: 65-5327310
Telex: RS 24610

■ Taipei Branch

12th Floor, Hung Kuo Building,
167 Tun Hua North Road,
Taipei, Taiwan
Phone: 886-2-25455466
Fax: 886-2-25460559
Telex: 26087 FUJITPI

■ Beijing Representative Office

Room No.802, CITIC Building,
19 Jianguo Men Wai Dajie,
Beijing,
The People's Republic of China
Phone: 86-10-65004694
Fax: 86-10-65002161
Telex: 22906 FIBBJCN

■ Guangzhou Representative Office

Room No.2659, Dongfang Hotel, 1 Liu Hua
Lu, Guangzhou, Guangdong Province,
The People's Republic of China
Phone: 86-20-86669277
Fax: 86-20-86663814
Telex: 44596 FJBGZCN

■ Ho Chi Minh Representative Office

Suite D, 4th Floor, OSIC Building,
No.8 Nguyen Hue Street, District 1,
Ho Chi Minh City, Vietnam
Phone: 84-8-8243195
Fax: 84-8-8243194
Telex: 813184 FUJIHM VT

■ Jakarta Representative Office

24th Floor, BII Plaza Tower II
Jalan M.H. Thamrin No. 51,
Jakarta 10350, Indonesia
Phone: 62-21-3927061
Fax: 62-21-3927064
Telex: 69172

■ Kuala Lumpur Representative Office

30th Floor, UBN Tower,
No.10, Jalan P. Ramlee,
50250 Kuala Lumpur, Malaysia
Phone: 60-3-2307950
Fax: 60-3-2307951
Telex: MA 32351/FUJIKL

■ Melbourne Representative Office

Level 18, 367 Collins Street,
Melbourne, Victoria 3000, Australia
Phone: 61-3-96292844
Fax: 61-3-96292737
Telex: 151291

■ Nanjing Representative Office

Room No.801, Nanjing Grand Hotel,
208 Guangzhou Road, Nanjing,
Jiangsu Province
The People's Republic of China
Phone: 86-25-3329379
Fax: 86-25-3319355

■ New Delhi Representative Office

World Trade Centre, 5th Floor,
Barakhamba Lane, New Delhi 110001, India
Phone: 91-11-371-1808
Fax: 91-11-371-1840
Telex: 031-63179

■ Sydney Representative Office

Level 28, Maritime Centre, 201 Kent Street,
Sydney, N.S.W. 2000, Australia
Phone: 61-2-9221-2211
Fax: 61-2-9251-5331
Telex: 27307

■ Tianjin Representative Office

Room 2202, Tianjin International Building,
75, Nanjing Road, Tianjin,
The People's Republic of China
Phone: 86-22-23305448
Fax: 86-22-23305489

■ Yangon Representative Office

International Business Centre, Unit 305,
No. 88 Pyay Road, 6 1/2 Miles, Hlaing
Township, Yangon, Union of Myanmar
Phone: 95-1-666332
Fax: 95-1-666387

■ Subsidiaries

■ P.T. Fuji Bank International Indonesia★ (Commercial banking)

24th Floor, BII Plaza Tower II
Jalan M.H. Thamrin No. 51,
Jakarta 10350, Indonesia
Phone: 62-21-3925222
Fax: 62-21-3926354
Telex: 69142

■ Fuji Capital Markets (HK) Limited★ (Swaps and derivatives services)

2502 Gloucester Tower, The Landmark,
11 Pedder Street, Central, Hong Kong
Phone: 852-2537-3815
Fax: 852-2826-4891

■ The Fuji Futures (Singapore) Pte., Limited★ (Operations in financial futures markets)

Six Battery Road #13-16,
Singapore 049909
Phone: 65-2213633
Fax: 65-2273038

■ Fuji International Finance (Australia) Limited★ (Corporate and merchant banking)

Level 28, Maritime Centre, 201 Kent Street,
Sydney, N.S.W. 2000, Australia
Phone: 61-2-9251-2322
Fax: 61-2-9235-1750
Telex: 27307

■ Fuji International Finance (HK) Limited★ (Corporate and investment banking)

3301, Gloucester Tower, The Landmark,
11 Pedder Street, Central, Hong Kong
Phone: 852-25217233
Fax: 852-28459177
Telex: 76884

■ Heller Asia Capital (Singapore) Limited★ (Factoring)

6 Shenton Way, #20-08, DBS Building,
Tower 2, Singapore 068809
Phone: 65-226-3822
Fax: 65-222-3198
Telex: 23339

■ Heller Financial Services Limited★ (Factoring)

234 Sussex Street, 6th Floor,
Sydney, N.S.W. 2000, Australia
Phone: 61-2-9372-2388
Fax: 61-2-9267-6032
Telex: 27500

■ Kwong On Bank, Limited★ (Commercial banking) Head Office

59-65 Asia Standard Tower, Queen's Road
Central, Hong Kong
Phone: 852-28153636
Fax: 852-25439272
Telex: 73359, 73901

■ Branches

33 offices in Hong Kong

■ Fuji International Finance (Singapore), Limited★

1 Raffles Place, #26-02, OUB Centre,
Singapore 048616, Singapore
Phone: 65-439-7600
Fax: 65-536-7364
Telex: RS24610

■ Affiliates

■ SIME Merchant Bankers Berhad (Investment banking)

10th Floor, UMBC Annexe, Jalan Sulaiman,
50000 Kuala Lumpur, Malaysia
Phone: 60-3-2749011
Fax: 60-3-2740304
Telex: 30250

■ China Kang Fu International Leasing Co., Ltd. (Leasing)

Building No.3, Xiyuan Hotel, Erligou,
Haidian District, Beijing,
The People's Republic of China
Phone: 86-10-6831-2540
Fax: 86-10-6831-1528
Telex: 222757

■ East Asia Heller Limited (Factoring)

Suite 5904-07, Central Plaza,
18 Harbour Road, Wanchai, Hong Kong
Phone: 852-2-8272336
Fax: 852-2-8272632
Telex: 74142

■ Heller Factoring (M) Sdn. Bhd. (Factoring)

Suite 08.04, Level 8, Menara Lion 165 Jalan,
Kuala Lumpur, Malaysia Ampang, 50450
Phone: 60-3-262-6827
Fax: 60-3-262-6652

■ P.T. Jaya Fuji Leasing Pratama (Leasing)

9th Floor, Jaya Building,
Jalan M.H. Thamrin 12, Jakarta, Indonesia
Phone: 62-21-331750
Fax: 62-21-325430
Telex: 61683

■ Thai Farmers Heller Factoring Co., Ltd. (Factoring)

Phatra Insurance Building, 1st Floor,
252 Ratchadapisek Road, Huaykwang,
Bangkok 10310, Thailand
Phone: 66-2-2762030
Fax: 66-2-2755165

EUROPE AND THE MIDDLE EAST



■ Europe, Africa & The Middle East Division

River Plate House, 7-11 Finsbury Circus,
London EC2M 7PX, U.K.
Phone: 44-171-826-3460
Fax: 44-171-638-0995
Telex: 886352

Branches and Representative Offices

■ Brussels Branch

Rue Guimard 6/8, B-1040, Brussels, Belgium
Phone: 32-2-234-0111
Fax: 32-2-230-9366
Telex: 20700

■ Düsseldorf Branch

Immermannstrasse 3, 40210 Düsseldorf,
F.R. Germany
Phone: 49-211-16930
Fax: 49-211-1789150
Telex: 8587388

■ London Branch

River Plate House, 7-11 Finsbury Circus,
London EC2M 7DH, U.K.
Phone: 44-171-588-2211
Fax: 44-171-588-1400
Telex: 886352

■ Madrid Branch

Plaza Manuel Gómez Moreno, s/n°
Edificio Alfredo Mahou, Planta 22,
Centro Comercial AZCA,
28020 Madrid, Spain
Phone: 3491-581-9444
Fax: 3491-581-9443
Telex: 47593

■ Milan Branch

Via Filippo Turati 16/18, 20121 Milano, Italy
Phone: 39-02-6596527
Fax: 39-02-6596589
Telex: 353172

■ Paris Branch

26 Avenue des Champs-Élysées,
75008 Paris, France
Phone: 33-1-4413-6000
Fax: 33-1-4413-6060
Telex: 641779

■ Bahrain Representative Office

Manama Center, Part 4,
Government Road, P.O.Box 26899,
Manama, Bahrain
Phone: 973-224158
Fax: 973-224818
Telex: 9415

■ Berlin Representative Office

c/o Düsseldorf Branch
Immermannstrasse 3, 40210 Düsseldorf,
F.R. Germany
Phone: 49-211-16930
Fax: 49-211-352407
Telex: 8587388 ~ 9

■ Manchester Representative Office

Part 4th Floor, National House,
36 St. Ann Street,
Manchester H6O 8HF, U.K.
Phone: 44-161-835-2200
Fax: 44-161-834-6790
Telex: 886317

■ Tehran Representative Office

3rd Floor, No. 1, 14th Street,
Khaled Eslamboli Avenue,
Tehran, Iran
Phone: 98-21-8726593
Fax: 98-21-8723449
Telex: 215132

■ Vienna Representative Office

Türkenstrasse 25,
1090 Wien, Republic of Austria
Phone: 43-1-3102181
Fax: 43-1-3102124
Telex: 116246

Subsidiaries

■ Fuji Bank (Deutschland) AG★

(Commercial and investment banking)
Mainzer Landstrasse 46,
60325 Frankfurt am Main, F.R. Germany
Phone: 49-69-170900
Fax: 49-69-7241034
Telex: 416535

■ Fuji Bank (Luxembourg) S.A.★

(Commercial and investment banking)
Centre Financier, 29 Avenue
de la Porte-Neuve 2227,
Luxembourg
Phone: 352-474681
Fax: 352-474688
Telex: 3213

■ Fuji Bank Nederland N.V.★

(Commercial and investment banking)
Rivierstaete Amsterdam 166, 1079 LH,
Amsterdam, The Netherlands
Phone: 31-20-6610049
Fax: 31-20-6610201
Telex: 10395

■ Fuji Bank (Schweiz) AG★

(Commercial and investment banking)
Paradeplatz/Tiefenhöfe 6,
8022 Zürich, Switzerland
Phone: 41-1-211-3313
Fax: 41-1-211-6629
Telex: 812138

■ Fuji Capital Markets (UK) Limited★

(Swaps and derivatives services)
River Plate House, 7-11 Finsbury Circus,
London EC2M 7DH, U.K.
Phone: 44-171-972-9900
Fax: 44-171-972-9901

■ Fuji International Finance PLC★

(Investment banking)
River Plate House, 7-11 Finsbury Circus,
London EC2M 7NT, U.K.
Phone: 44-171-256-8888
Fax: 44-171-588-2033
Telex: 884275

■ Fuji Leasing (Deutschland) GmbH★

(Leasing)
Immermannstrasse 3-5, 40210 Düsseldorf,
F.R. Germany
Phone: 49-211-16930
Fax: 49-211-1789150
Telex: 8587388 ~ 9

■ Fuji Leasing (UK) Limited★

(Leasing)
River Plate House, 7-11 Finsbury Circus,
London EC2M 7DH, U.K.
Phone: 44-171-826-3219
Fax: 44-171-588-1400
Telex: 886352

Affiliates

■ Belgo-Factors, N.V.

(Factoring)
Steenweg op Tielen 51,
B-2300, Turnhout, Belgium
Phone: 32-14-405411
Fax: 32-14-405600
Telex: 31045

■ Factofrance Heller, S.A.

(Factoring)
Tour Facto, Cedex 88,
92988 Paris, France
Phone: 33-1-46-35-70-00
Fax: 33-1-46-35-69-00
Telex: 200134

■ Fuji Investment Management Company

(Europe) Limited
(Asset management)
River Plate House, 7-11, Finsbury Circus,
London EC2M 7HJ, U.K.
Phone: 44-171-826-3380
Fax: 44-171-782-9165

■ Handlowy-Heller S.A.

(Factoring)
U1 Kasprzaka 18/20
01-211 Warsaw, Poland
Phone: 48-22-632-7780
Fax: 48-22-632-7087

■ Heller Bank A.G.

(Factoring)
Postfach 2420, 55014 Mainz,
F.R. Germany
Phone: 49-6131-980-200
Fax: 49-6131-980-262
Telex: 4187638

■ Heller Factoring Española, S.A.

(Factoring)
Urgel, 240-8°D, 08036 Barcelona, Spain
Phone: 34-3-439-4806
Fax: 34-3-321-2506
Telex: 50093

■ Heller Factoring Portuguesa, S.A.

(Factoring)
Edificio Castil, Rua Castilho, 39-14th Floor,
1200, Lisbon, Portugal
Phone: 351-1-381-5750
Fax: 351-1-381-5786
Telex: 18531

■ NMB Heller N.V.

(Factoring)
Runnenburg 30,
3981 AZ Bunnik, The Netherlands
Phone: 31-30-65-93-193
Fax: 31-30-65-93-493
Telex: 47678

■ Nordisk Factoring A/S

(Factoring)
Teknikerkyen 21, DK-2830,
Virum, Denmark
Phone: 45-45-833-888
Fax: 45-45-833-212
Telex: 19008

■ OB Heller A.S.

(Factoring)
Kristanova 3 130 00 Prague 3,
Czech Republic
Phone: 420-2-627-37-01
Fax: 420-2-627-41-43

■ NMB-Heller Ltd.

(Factoring)
22 Park Street,
4th-5th Floors, Park House,
Croydon, CR9 1RD, U.K.
Phone: 44-181-681-2641
Fax: 44-181-681-8072
Telex: 27348

DOMESTIC OFFICES AND AFFILIATED COMPANIES

Fuji Securities Co., Ltd.
Established: October 1994
Capitalization: ¥25,000 million
Percentage of Ownership: 100%

The Fuji Trust and Banking Co., Ltd.
Established: June 1996
Capitalization: ¥10,000 million
Percentage of Ownership: 100%

Fuji Investment Management Co., Ltd.
Established: September 1993
Capitalization: ¥2,050 million
Percentage of Ownership: 5%

Fuji Research Institute Corporation
Established: October 1988
Capitalization: ¥1,600 million
Percentage of Ownership: 5%

Fujigin Factors, Ltd.
Established: April 1978
Capitalization: ¥500 million
Percentage of Ownership: 5%

Fujigin Building, Ltd.
Established: November 1989
Capitalization: ¥470 million
Percentage of Ownership: 100%

Fujigin Capital Company
Established: July 1983
Capitalization: ¥450 million
Percentage of Ownership: 5%

The Fujigin Credit, Ltd.
Established: November 1974
Capitalization: ¥400 million
Percentage of Ownership: 5%

The Fuji Sogo Kanri Co., Ltd.
Established: December 1994
Capitalization: ¥300 million
Percentage of Ownership: 100%

Fuji Career Bureau, Ltd.
Established: May 1983
Capitalization: ¥70 million
Percentage of Ownership: 100%

Fuji Business Agency, Ltd.
Established: November 1978
Capitalization: ¥50 million
Percentage of Ownership: 100%

Fujigin Software Service, Ltd.
Established: August 1982
Capitalization: ¥50 million
Percentage of Ownership: 5%

Fuji Business Service, Ltd.
Established: June 1974
Capitalization: ¥20 million
Percentage of Ownership: 100%

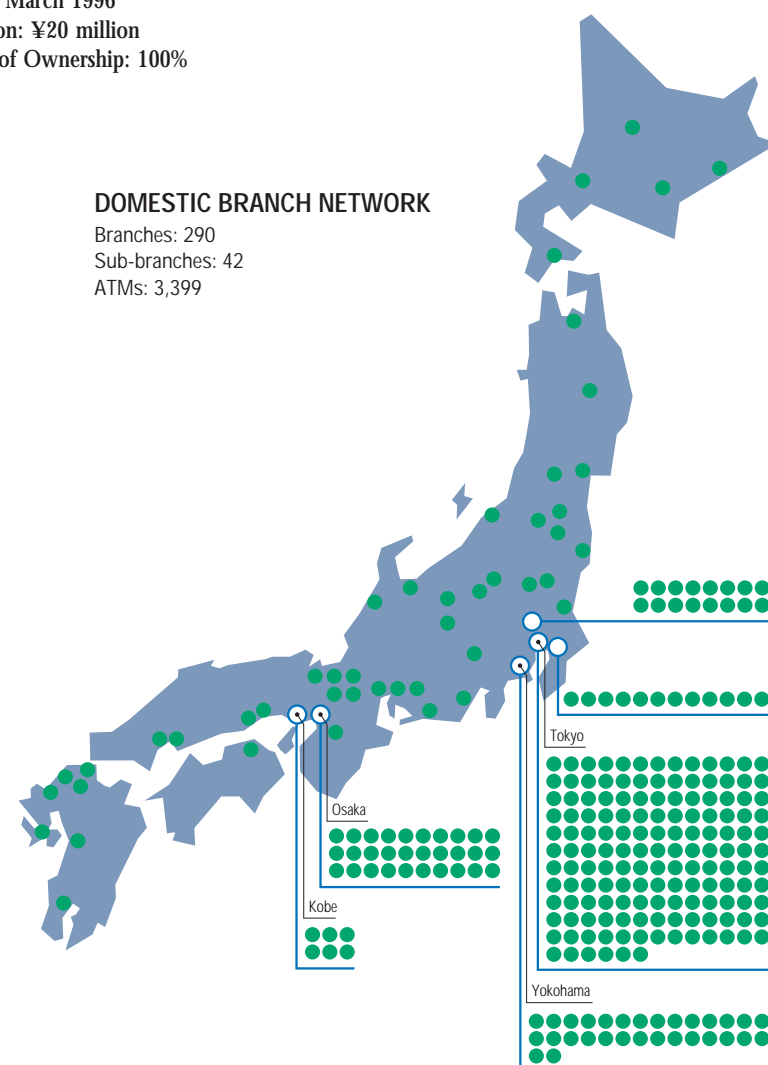
Fuji International Business Service Co., Ltd.
Established: April 1993
Capitalization: ¥20 million
Percentage of Ownership: 100%

Fuji Total Service, Ltd.
Established: March 1996
Capitalization: ¥20 million
Percentage of Ownership: 100%

Fujigin Operation Service, Ltd.
Established: June 1985
Capitalization: ¥20 million
Percentage of Ownership: 5%

Fujigin Kousei Service, Ltd.
Established: March 1988
Capitalization: ¥10 million
Percentage of Ownership: 100%

Fujigin Marketing Service, Ltd.
Established: March 1988
Capitalization: ¥10 million
Percentage of Ownership: 100%



CORPORATE DATA

Head Office

5-5, Otemachi 1-chome,
Chiyoda-ku,
Tokyo 100-0004, Japan
Phone: 03-3216-2211
Telex: 22367, 22722, 22170
Internet address:
<http://www.fujibank.co.jp>

Established

1880

Fiscal Year

April 1 to March 31

Auditor

Showa Ota & Co.

Employees

14,275 domestic
2,023 overseas
(Figures are for those
employees of The Fuji
Bank, Limited.)

Office

290 domestic, 47 overseas

For further information, please contact
the Overseas Business Division,
Planning, located at our head office.

This annual report is printed on recycled paper.
Printed in Japan