

---

---

**UNITED STATES**  
**SECURITIES AND EXCHANGE COMMISSION**  
Washington, D.C. 20549

**FORM 6-K**

**REPORT OF FOREIGN PRIVATE ISSUER**  
**PURSUANT TO RULE 13a-16 OR 15d-16**  
**UNDER THE SECURITIES EXCHANGE ACT OF 1934**

For the month of July 2010

Commission File Number 001-33098

**Mizuho Financial Group, Inc.**

(Translation of registrant's name into English)

5-1, Marunouchi 2-chome  
Chiyoda-ku, Tokyo 100-8333  
Japan

(Address of principal executive office)

Indicate by check mark whether the registrant files or will file annual reports under cover of Form 20-F or Form 40-F.  
Form 20-F  Form 40-F

Indicate by check mark if the registrant is submitting the Form 6-K in paper as permitted by Regulation S-T Rule 101(b)(1):

Indicate by check mark if the registrant is submitting the Form 6-K in paper as permitted by Regulation S-T Rule 101(b)(7):

Indicate by check mark whether the registrant by furnishing the information contained in this Form is also thereby furnishing the information to the Commission pursuant to Rule 12g3-2(b) under the Securities Exchange Act of 1934.

Yes  No

If "Yes" is marked, indicate below the file number assigned to the registrant in connection with Rule 12g3-2(b):82-\_\_\_\_\_.

---

---

## SIGNATURES

Pursuant to the requirements of the Securities Exchange Act of 1934, the registrant has duly caused this report to be signed on its behalf by the undersigned, thereunto duly authorized.

Date: July 29, 2010

Mizuho Financial Group, Inc.

By: /s/ Takeo Nakano

Name: Takeo Nakano

Title: Managing Director / CFO

The following is an English translation of excerpt regarding Basel II capital adequacy disclosure and relevant information released in our Japanese language disclosure material published in July 2010. The capital adequacy disclosure and other financial information included herein are based on Japanese GAAP pursuant to Japanese regulatory requirements.

In this report, “we,” “us,” and “our” refer to Mizuho Financial Group, Inc. and, unless the context indicates otherwise, its consolidated subsidiaries. “Mizuho Financial Group” refers to Mizuho Financial Group, Inc.

## **Status of Capital Adequacy**

---

<u>Capital adequacy ratio highlights</u>	2
■ <u>Capital adequacy ratio highlights</u>	
<u>Status of Mizuho Financial Group’s consolidated capital adequacy</u>	3
■ <u>Scope of consolidation</u>	3
(1) Scope of consolidation for calculating consolidated capital adequacy ratio	
■ <u>Consolidated capital adequacy ratio</u>	5
(2) Summary table of consolidated capital adequacy ratio (BIS Standard)	
■ <u>Risk-based capital</u>	7
(3) Summary of types of capital instruments	
(4) Summary of approach to assessing capital adequacy	
(5) Required capital by portfolio classification	
■ <u>Credit risk</u>	21
(6) Credit risk management	
(7) Credit risk exposure, etc.	
■ <u>Methods for credit risk mitigation</u>	34
(8) Risk management regarding credit risk mitigation	
(9) Credit risk mitigation by portfolio classification	
■ <u>Counterparty risk in derivatives transactions and long-settlement transactions</u>	35
(10) Management of counterparty risk in derivatives transactions and long-settlement transactions	
(11) Status of counterparty risk in derivatives transactions and long-settlement transactions	
■ <u>Securitization exposure</u>	37
(12) Summary of securitization exposure and its risk management	
(13) Accounting policies for securitization transactions	
(14) Quantitative disclosure items for securitization exposure	
■ <u>Market risk</u>	45
■ <u>Operational risk</u>	45
■ <u>Equity exposure in banking book</u>	45
(15) Risk management related to equity exposure in banking book	
(16) Status of equity exposure in banking book	

---

<u>Credit Risk Management</u>	46
-------------------------------	----

<u>Market and Liquidity Risk Management</u>	48
---	----

<u>Operational Risk Management</u>	54
------------------------------------	----

## Capital adequacy ratio highlights

The Basel II Framework, based on the “International Convergence of Capital Measurement and Capital Standards: A Revised Framework” issued by the Basel Committee on Banking Supervision, requires the disclosure of capital adequacy information to ensure the enhanced effectiveness of market discipline. Our disclosure is made under the “Matters Separately Prescribed by the Commissioner of the Financial Services Agency Regarding Capital Adequacy Conditions, etc. pursuant to Article 19-2, Paragraph 1, Item 5, Subitem (d), etc. of the Ordinance for Enforcement of the Banking Law (Ministry of Finance Ordinance No. 10 of 1982)” (FSA Notice No. 15 of 2007). As a method to calculate the amount equivalent to the operational risk, we have adopted the advanced measurement approach since September 30, 2009 in place of the gross profit allocation approach (the standardized approach). The figures disclosed herein are therefore based on the gross profit allocation approach for the fiscal year ended March 31, 2009 and the advanced measurement approach for the fiscal year ended March 31, 2010.

### ■ Capital adequacy ratio highlights

#### Mizuho Financial Group (Consolidated)

	(Billions of yen)	
	As of March 31, 2009	As of March 31, 2010
<b>Consolidated capital adequacy ratio (BIS standard)</b>	<b>10.53%</b>	<b>13.46%</b>
Tier 1 capital ratio	6.37%	9.09%
Tier 1 capital	3,765.0	5,173.4
Tier 2 capital	2,793.1	2,725.4
Deductions for total risk-based capital	334.5	240.8
<b>Total risk-based capital</b>	<b>6,223.6</b>	<b>7,658.0</b>
<b>Risk-weighted assets</b>	<b>59,056.2</b>	<b>56,863.2</b>

#### (Reference)

#### Mizuho Corporate Bank (Consolidated)

	(Billions of yen)	
	As of March 31, 2009	As of March 31, 2010
<b>Consolidated capital adequacy ratio (BIS standard)</b>	<b>11.89%</b>	<b>16.00%</b>
Tier 1 capital ratio	8.48%	12.57%
Tier 1 capital	2,697.8	3,914.2
Tier 2 capital	1,345.3	1,239.3
Deductions for total risk-based capital	261.3	170.3
<b>Total risk-based capital</b>	<b>3,781.8</b>	<b>4,983.2</b>
<b>Risk-weighted assets</b>	<b>31,790.8</b>	<b>31,128.7</b>

#### Mizuho Corporate Bank (Non-consolidated)

	(Billions of yen)	
	As of March 31, 2009	As of March 31, 2010
<b>Non-consolidated capital adequacy ratio (BIS standard)</b>	<b>11.75%</b>	<b>17.68%</b>
Tier 1 capital ratio	6.05%	11.99%
Tier 1 capital	1,862.6	3,329.6
Tier 2 capital	1,862.6	1,644.9
Deductions for total risk-based capital	111.9	66.1
<b>Total risk-based capital</b>	<b>3,613.3</b>	<b>4,908.4</b>
<b>Risk-weighted assets</b>	<b>30,742.3</b>	<b>27,762.5</b>

#### Mizuho Bank (Consolidated)

	(Billions of yen)	
	As of March 31, 2009	As of March 31, 2010
<b>Consolidated capital adequacy ratio (Domestic standard)</b>	<b>11.77%</b>	<b>12.88%</b>
Tier 1 capital ratio	6.65%	7.74%
Tier 1 capital	1,696.5	1,866.2
Tier 2 capital	1,382.6	1,306.5
Deductions for total risk-based capital	77.3	68.2
<b>Total risk-based capital</b>	<b>3,001.8</b>	<b>3,104.6</b>
<b>Risk-weighted assets</b>	<b>25,497.9</b>	<b>24,099.2</b>
(Reference) Consolidated capital adequacy ratio (BIS standard)	10.56%	12.83%

Mizuho Bank (Non-Consolidated)

	(Billions of yen)	
	As of March 31, 2009	As of March 31, 2010
<b>Non-consolidated capital adequacy ratio (Domestic standard)</b>	<b>11.76%</b>	<b>12.97%</b>
Tier 1 capital ratio	6.63%	7.83%
Tier 1 capital	1,644.9	1,824.9
Tier 2 capital	1,368.3	1,305.6
Deductions for total risk-based capital	98.1	109.1
<b>Total risk-based capital</b>	<b>2,915.2</b>	<b>3,021.4</b>
<b>Risk-weighted assets</b>	<b>24,776.0</b>	<b>23,280.9</b>
(Reference) Non-consolidated capital adequacy ratio (BIS standard)	10.45%	12.88%

## Status of Mizuho Financial Group's consolidated capital adequacy

### ■ Scope of consolidation

#### (1) Scope of consolidation for calculating consolidated capital adequacy ratio

##### (A) Difference from the companies included in the scope of consolidation based on consolidation rules for preparation of consolidated financial statements

None as of March 31, 2009 and 2010.

##### (B) Number of consolidated subsidiaries

	<u>As of March 31, 2009</u>	<u>As of March 31, 2010</u>
<b>Consolidated subsidiaries</b>	<b>145</b>	<b>162</b>

Our major consolidated subsidiaries are Mizuho Corporate Bank, Ltd., Mizuho Bank, Ltd., Mizuho Trust & Banking Co., Ltd. and Mizuho Securities Co., Ltd.

The following table sets forth information with respect to our principal consolidated subsidiaries as of March 31, 2010:

Name	Country of organization	Main business	Proportion of ownership interest (%)	Proportion of voting interest (%)
<b>Domestic</b>				
Mizuho Corporate Bank, Ltd.	Japan	Banking	100.0%	100.0%
Mizuho Bank, Ltd.	Japan	Banking	100.0%	100.0%
Mizuho Trust & Banking Co., Ltd.	Japan	Trust and banking	74.8%	74.8%
Mizuho Securities Co., Ltd.	Japan	Securities	57.9%	59.5%
Mizuho Investors Securities Co., Ltd.	Japan	Securities	66.5%	66.8%
Trust & Custody Services Bank, Ltd.	Japan	Trust and banking	54.0%	54.0%
Mizuho Asset Management Co., Ltd.	Japan	Investment management	98.7%	98.7%
Mizuho Research Institute Ltd.	Japan	Research and consulting	98.4%	98.6%
Mizuho Information & Research Institute Inc.	Japan	Information technology	91.5%	91.5%
Mizuho Financial Strategy Co., Ltd.	Japan	Consulting	100.0%	100.0%
Mizuho Private Wealth Management Co., Ltd.	Japan	Consulting	100.0%	100.0%
Mizuho Factors, Limited	Japan	Factoring	100.0%	100.0%
Mizuho Credit Guarantee Co., Ltd.	Japan	Credit guarantee	100.0%	100.0%
Mizuho Capital Co., Ltd.	Japan	Venture capital	50.0%	50.0%
Defined Contribution Plan Services Co., Ltd.	Japan	Pension plan-related business	60.0%	60.0%
<b>Overseas</b>				
Mizuho Bank (Switzerland) Ltd	Switzerland	Trust and banking	100.0%	100.0%
Mizuho Capital Markets Corporation	U.S.A.	Derivatives	100.0%	100.0%
Mizuho Corporate Bank (China), Ltd.	China	Banking	100.0%	100.0%
Mizuho Corporate Bank (USA)	U.S.A.	Banking	100.0%	100.0%
Mizuho Corporate Bank Nederland N.V.	Netherlands	Banking and securities	100.0%	100.0%
Mizuho International plc	U.K.	Securities and banking	100.0%	100.0%
Mizuho Securities USA Inc.	U.S.A.	Securities	100.0%	100.0%
Mizuho Trust & Banking (Luxembourg) S.A.	Luxembourg	Trust and banking	100.0%	100.0%
Mizuho Trust & Banking Co. (USA)	U.S.A.	Trust and banking	100.0%	100.0%

PT. Bank Mizuho Indonesia	Indonesia	Banking	99.0%	99.0%
---------------------------	-----------	---------	-------	-------

Note:

Mizuho Trust & Banking Co., Ltd, Mizuho Securities Co., Ltd and Mizuho Investors Securities Co., Ltd are listed on the Tokyo Stock Exchange.

**(C) Corporations providing financial services for which Article 9 of the Consolidated Capital Adequacy Ratio Notice is applicable**

None as of March 31, 2009 and 2010.

**(D) Related companies for which deductions set forth in Article 8, Paragraph 1, Item 2, Subsections 1 to 3 of the Consolidated Capital Adequacy Ratio Notice are applicable**

None as of March 31, 2009 and 2010.

**(E) Companies described in Article 52-23, Paragraph 1, Item 10 of the Banking Law that are mainly engaged in businesses as described in Subsection 1 of such item or companies set forth in Item 11 of such paragraph, but that are not in the holding company's corporate group**

None as of March 31, 2009 and 2010.

**(F) Restrictions on transfer of funds or capital within the holding company's corporate group**

None as of March 31, 2009 and 2010.



■ Consolidated capital adequacy ratio

(2) Summary table of consolidated capital adequacy ratio (BIS standard)

		(Billions of yen)	
		As of March 31, 2009	As of March 31, 2010
<b>Tier 1 capital</b>	Common stock and preferred stock	1,540.9	1,805.5
	Non-cumulative perpetual preferred stock	—	—
	Advance payment for new shares	—	—
	Capital surplus	411.3	552.1
	Retained earnings	607.9	854.6
	Less: Treasury stock	6.2	5.1
	Advance payment for treasury stock	—	—
	Less: Dividends (estimate), etc	131.0	134.9
	Less: Unrealized losses on other securities	516.0	—
	Foreign currency translation adjustments	(114.7)	(92.6)
	Stock acquisition rights	1.1	2.3
	Minority interest in consolidated subsidiaries	2,036.8	2,289.0
	Preferred securities issued by overseas SPCs	1,886.8	1,937.8
	Less: Goodwill equivalent	—	—
	Less: Intangible fixed assets recognized as a result of a merger	—	41.9
	Less: Capital increase due to securitization transactions	9.1	6.5
	Less: 50% of excess of expected losses relative to eligible reserves by banks adopting internal ratings-based approach	55.9	48.9
	Total of Tier 1 capital before deduction of deferred tax assets (total of the above items)	3,765.0	5,173.4
	Deduction for deferred tax assets	—	—
	Total	(A) 3,765.0	5,173.4
	Preferred securities with a step-up interest rate provision	(B) 524.0	524.0
	Ratio to Tier 1 = (B) / (A) X 100	13.91%	10.12%
<b>Tier 2 capital</b>	45% of unrealized gains on other securities	—	122.6
	45% of revaluation reserve for land	112.8	106.7
	General reserve for possible losses on loans	7.9	5.4
	Excess of eligible reserves relative to expected losses by banks adopting internal ratings-based approach	—	—
	Debt capital, etc.	2,759.0	2,490.5
	Perpetual subordinated debt and other debt capital	789.8	586.3
	Dated subordinated debt and redeemable preferred stock	1,969.2	1,904.2
	Total	2,879.9	2,725.4
	Tier 2 capital included as qualifying capital	(C) 2,793.1	2,725.4
<b>Tier 3 capital</b>	Short-term subordinated debt	—	—
	Tier 3 capital included as qualifying capital	(D) —	—
<b>Deductions for total risk-based capital</b>	Deductions for total risk-based capital	(E) 334.5	240.8
<b>Total risk-based capital</b>	(A) + (C) + (D) – (E)	(F) 6,223.6	7,658.0
<b>Risk-weighted assets</b>	Credit risk-weighted assets	(G) 54,231.6	51,908.7
	On-balance-sheet items	43,629.3	42,796.2
	Off-balance-sheet items	10,602.3	9,112.4
	Market risk equivalent assets [(I)/8%]	(H) 1,342.1	1,297.9
	(Reference) Market risk equivalent	(I) 107.3	103.8
	Operational risk equivalent assets [(K)/8%]	(J) 3,482.3	3,656.5
	(Reference) Operational risk equivalent	(K) 278.5	292.5

Adjusted floor amount	(L)	—	n.a.
Adjusted amount for credit risk-weighted assets	(M)	n.a.	—
Adjusted amount for operational risk equivalent	(N)	n.a.	—
Total [(G) + (H) + (J) + (L) + (M) + (N)]	(O)	<u>59,056.2</u>	<u>56,863.2</u>
<b>Consolidated capital adequacy ratio (BIS standard) = (F) / (O) X 100</b>		<b><u>10.53%</u></b>	<b><u>13.46%</u></b>
<b>Tier 1 capital ratio = (A) / (O) X 100</b>		<b><u>6.37%</u></b>	<b><u>9.09%</u></b>

---

Notes:

1. The above figures are calculated based on the BIS standard applied on a consolidated basis under the “Standards for Determining the Status of Capital Adequacy in consideration of assets held by a bank holding company and by its subsidiaries, in accordance with Banking Law Article 52-25” (FSA Notice No. 20 of 2006 (the “Notice”)). For the figures as of March 31, 2009 and 2010, we did not apply the exception to the Notice (FSA Notice No. 79 of 2008).
2. As it is not possible to break down Mizuho Financial Group’s common stock and preferred stock according to classes of stock, no value for non-cumulative perpetual preferred stock is stated separately from capital.
3. In calculating the consolidated capital adequacy ratio, we underwent an examination following the procedures agreed with Ernst & Young ShinNihon LLC, on the basis of “Treatment in implementing examination by agreed-upon procedures for calculating capital adequacy ratio” (Industry Committee Report No. 30 of the Japanese Institute of Certified Public Accountants). Note that this is not a part of the accounting audit performed on our consolidated financial statements. This consists of an examination under agreed-upon procedures performed by Ernst & Young ShinNihon LLC on a portion of the internal control structure concerning the calculation of the capital adequacy ratio and a report of the results to us. As such, they do not represent an opinion regarding the capital adequacy ratio itself nor the internal controls related to the calculation of the capital adequacy ratio.
4. The amounts of net deferred tax assets as of March 31, 2009 and 2010 were ¥714.6 billion and ¥520.8 billion, respectively, and the maximum amounts of deferred tax assets that can be recorded without diminishing the amount of Tier 1 capital for the purpose of calculating capital adequacy ratio as of March 31, 2009 and 2010 were ¥753.0 billion and ¥1,034.6 billion, respectively.
5. The “adjusted floor amount” is the amount obtained by multiplying (i) 12.5 by (ii) the excess, if any, of the required capital under the foundation internal rating-based approach multiplied by the rate prescribed in the Notice over the required capital under the advanced internal ratings-based approach. The “adjusted amount for credit risk-weighted assets” is the amount obtained by multiplying (i) 12.5 by (ii) the excess, if any, of the required capital under the foundation internal ratings-based approach multiplied by the rate prescribed in the Notice over the required capital under the advanced internal ratings-based approach; and the “adjusted amount for operational risk equivalent” is the amount obtained by multiplying (i) 12.5 by (ii) the excess, if any, of the required capital under the basic indicator approach multiplied by the rate prescribed in the Notice over the required capital under the advanced measurement approach.

## ■ Risk-based capital

### (3) Summary of types of capital instruments

#### (A) Summary of preferred securities

We have included each of the following preferred securities issued by our overseas special purpose companies as Tier 1 capital for the purposes of our consolidated capital adequacy ratios.

#### *Preferred securities issued by SPCs of Mizuho Financial Group*

<b>Issuer</b>	Mizuho Preferred Capital (Cayman) 1 Limited (as “MPC1,” and the preferred securities described below are referred to as the “MPC1 Preferred Securities.”)
<b>Type of securities</b>	Non-cumulative perpetual preferred securities
<b>Mandatory redemption date</b>	None
<b>Optional redemption</b>	Optionally redeemable on each dividend payment date falling in or after June 2012 (subject to prior approval from regulatory authorities)
<b>Dividends</b>	Floating dividend rate (No dividend rate step-up. As stated in “Dividend suspension events” below, dividend payments that are suspended are non-cumulative.)
<b>Dividend payment date</b>	Last business day of June in each year
<b>Total amount issued</b>	¥171.0 billion
<b>Issue date</b>	February 14, 2002
<b>Dividend suspension events</b>	If any of the following events arise, dividend payments are suspended on a non-cumulative basis: (1) when Mizuho Financial Group issues to MPC 1 a Loss Absorption Certificate <sup>(1)</sup> ; (2) when dividends on Mizuho Financial Group’s Preferred Stock <sup>(2)</sup> are suspended; (3) when Mizuho Financial Group issues to MPC 1 a Distributable Amounts Limitation Certificate <sup>(4)</sup> stating that there are no Available Distributable Amounts <sup>(3)</sup> ; and (4) when the dividend payment date is not a Mandatory Dividend Payment Date <sup>(5)</sup> , and Mizuho Financial Group issues to MPC 1 a dividend instruction instructing it not to pay any dividends on such dividend payment date.
<b>Mandatory dividend event</b>	If Mizuho Financial Group pays any dividends on its common stock with respect to a fiscal year, full dividends must be paid on Parity Preferred securities <sup>(6)</sup> in June of the calendar year in which such fiscal year ends. However, it is subject to the following conditions: (1) no Loss Absorption Certificate <sup>(1)</sup> has been issued; (2) no preferred stock dividend limitation has arisen with respect thereto (partial dividend payments are made to the extent applicable); and (3) no Distributable Amounts Limitation Certificate <sup>(4)</sup> has been issued with respect thereto (partial dividends are paid to the extent applicable).
<b>Distributable amounts limitation</b>	When Mizuho Financial Group issues a Distributable Amounts Limitation Certificate <sup>(4)</sup> to MPC1, dividends are limited to the Available Distributable Amounts <sup>(3)</sup> .
<b>Dividend limitations</b>	When dividends on Mizuho Financial Group’s Preferred Stock <sup>(2)</sup> are reduced, dividends on Parity Preferred Securities <sup>(6)</sup> are also reduced by an equal percentage.
<b>Claims on residual assets</b>	Same priority as Mizuho Financial Group’s Preferred Stock <sup>(2)</sup>

<b>Issuer</b>	Mizuho Capital Investment (USD) 1 Limited (“MCI (USD) 1,” and the preferred securities described below are referred to as “MCI (USD) 1 Preferred Securities.”)	Mizuho Capital Investment (EUR) 1 Limited (“MCI (EUR) 1,” and the preferred securities described below are referred to as “MCI (EUR) 1 Preferred Securities.”)
<b>Type of securities</b>	Non-cumulative perpetual preferred securities	Non-cumulative perpetual preferred securities
<b>Mandatory redemption date</b>	None	None
<b>Optional redemption</b>	Starting from the dividend payment date falling in June 2016, optionally redeemable on each dividend payment date in five-year intervals (subject to prior approval from regulatory authorities)	Starting from the dividend payment date falling in June 2011, optionally redeemable on each dividend payment date in five-year intervals (subject to prior approval from regulatory authorities)
<b>Dividends</b>	Fixed dividend rate for the first ten years (although a floating dividend rate is applied with respect to dividend payment dates after June 2016. No dividend rate step-up. Dividend payments that are suspended are non-cumulative.)	Fixed dividend rate for the first five years (although a floating dividend rate is applied with respect to dividend payment dates after June 2011. No dividend rate step-up. Dividend payments that are suspended are non-cumulative.)
<b>Dividend payment date</b>	June 30th and December 30th of each year	June 30th of each year until June 2011, and June 30th and December 30th of each year thereafter
<b>Total amount issued</b>	US\$600 million	€500 million
<b>Issue date</b>	March 13, 2006	March 13, 2006
<b>Dividend suspension events</b>	<p>(Mandatory dividend suspension or reduction event)</p> <p>(1) When a Liquidation Event<sup>(7)</sup>, Reorganization Event<sup>(8)</sup>, Insolvency Event<sup>(9)</sup> or Governmental Action<sup>(10)</sup> has occurred to Mizuho Financial Group;</p> <p>(2) when Mizuho Financial Group’s Available Distributable Amounts<sup>(11)</sup> is insufficient, or dividends on its preferred stock<sup>(13)</sup> are suspended or reduced;</p> <p>(Optional dividend suspension or reduction event)</p> <p>(3) when the capital adequacy ratio of Mizuho Financial Group or its Tier 1 capital ratio fails to meet the minimum requirement, or would fall short as a result of the dividend payments on the MCI (USD) 1 Preferred Securities, and Mizuho Financial Group issues a dividend suspension notice to MCI (USD) 1; and</p> <p>(4) when Mizuho Financial Group fails to pay dividends on its common stock and issues a dividend suspension notice to MCI (USD) 1.</p>	<p>(Mandatory dividend suspension or reduction event)</p> <p>(1) When a Liquidation Event<sup>(7)</sup>, Reorganization Event<sup>(8)</sup>, Insolvency Event<sup>(9)</sup> or Governmental Action<sup>(10)</sup> has occurred to Mizuho Financial Group;</p> <p>(2) when Mizuho Financial Group’s Available Distributable Amounts<sup>(12)</sup> is insufficient, or dividends on its preferred stock<sup>(13)</sup> are suspended or reduced;</p> <p>(Optional dividend suspension or reduction event)</p> <p>(3) when the capital adequacy ratio of Mizuho Financial Group or its Tier 1 capital ratio fails to meet the minimum requirement, or would fall short as a result of the dividend payments on the MCI (EUR) 1 Preferred Securities, and Mizuho Financial Group issues a dividend suspension notice to MCI (EUR) 1; and</p> <p>(4) when Mizuho Financial Group fails to pay dividends on its common stock and issues a dividend suspension notice to MCI (EUR) 1</p>
<b>Mandatory dividend event</b>	If Mizuho Financial Group pays any dividends on its common stock with respect to a fiscal year, dividend payments for the full amount of MCI (USD) 1 Preferred Securities must be made on the	If Mizuho Financial Group pays any dividends on its common stock with respect to a fiscal year, dividend payments for the full amount of MCI (EUR) 1 Preferred Securities must be made on

dividend payment dates during the subsequent fiscal year; provided that no event for the mandatory suspension or reduction of dividends has occurred and that no dividend suspension notice has been issued in conjunction with the occurrence of an optional dividend suspension or reduction event.

dividend payment dates during the subsequent fiscal year; provided that no event for the mandatory suspension or reduction of dividends has occurred and that no dividend suspension notice has been issued in conjunction with the occurrence of an optional dividend suspension or reduction event.

**Distributable amounts limitation**

Dividends for the MCI (USD) 1 preferred securities are paid to the extent of Mizuho Financial Group's Available Distributable Amounts<sup>(11)</sup>.

Dividends for the MCI (EUR) 1 preferred securities are paid to the extent of Mizuho Financial Group's Available Distributable Amounts<sup>(12)</sup>.

**Dividend limitations**

When dividends on Mizuho Financial Group's Preferred Stock<sup>(13)</sup> are reduced, dividends on MCI (USD) 1 Preferred Securities are also reduced by an equal percentage.

When dividends on Mizuho Financial Group's Preferred Stock<sup>(13)</sup> are reduced, dividends on MCI (EUR) 1 Preferred Securities are also reduced by an equal percentage.

**Claims for residual assets**

Same priority as Mizuho Financial Group's Preferred Stock<sup>(13)</sup>

Same priority as Mizuho Financial Group's Preferred Stock<sup>(13)</sup>

<b>Issuer</b>	Mizuho Capital Investment (JPY) 1 Limited (“MCI (JPY) 1,” and the preferred securities described below are referred to as “MCI (JPY) 1 Preferred Securities.”)	Mizuho Capital Investment (JPY) 2 Limited (“MCI (JPY) 2,” and the preferred securities described below are referred to as “MCI (JPY) 2 Preferred Securities.”)	Mizuho Capital Investment (JPY) 3 Limited (“MCI (JPY) 3,” and the preferred securities described below (Series A and Series B) are collectively referred to as “MCI (JPY) 3 Preferred Securities.”)
<b>Type of securities</b>	Non-cumulative perpetual preferred securities	Non-cumulative perpetual preferred securities	Non-cumulative perpetual preferred securities
<b>Mandatory redemption date</b>	None	None	None
<b>Optional redemption</b>	Starting from the dividend payment date falling in June 2016, optionally redeemable on each dividend payment date in five-year intervals (subject to prior approval from regulatory authorities)	Starting from the dividend payment date falling in June 2018, optionally redeemable on each dividend payment date (subject to prior approval from regulatory authorities)	Starting from the dividend payment date falling in June 2019, optionally redeemable on each dividend payment date (subject to prior approval from regulatory authorities)
<b>Dividends</b>	Fixed dividend rate for the first ten years (although a floating dividend rate is applied with respect to dividend payment dates after June 2016. No dividend rate step-up. Dividend payments that are suspended are non-cumulative.)	Fixed dividend rate for the first ten years (although a floating dividend rate is applied with respect to dividend payment dates after June 2018. Dividend rate step-up is applied. Dividend payments that are suspended are non-cumulative.)	Series A Fixed dividend rate for the first ten years (although a floating dividend rate is applied with respect to dividend payment dates after June 2019. Dividend rate step-up is applied. Dividend payments that are suspended are non-cumulative.) Series B Fixed dividend rate for the first ten years (although a floating dividend rate is applied with respect to dividend payment dates after June 2019. No dividend rate step-up. Dividend payments that are suspended are non-cumulative.)
<b>Dividend payment date</b>	June 30th and December 30th of each year	June 30th and December 30th of each year	June 30th and December 30th of each year
<b>Total amount issued</b>	¥400 billion	¥274.5 billion	Series A ¥249.5 billion Series B ¥53.5 billion
<b>Issue date</b>	January 12, 2007	January 11, 2008	July 11, 2008
<b>Dividend suspension events</b>	(Mandatory dividend suspension or reduction event) (1) When a Liquidation Event <sup>(7)</sup> , Reorganization Event <sup>(8)</sup> , Insolvency Event <sup>(9)</sup> or Governmental Action <sup>(10)</sup> has occurred to Mizuho Financial Group; (2) when Mizuho Financial Group’s Available Distributable Amounts <sup>(14)</sup> is insufficient, or dividends on its preferred stock <sup>(13)</sup> are suspended or reduced; (Optional dividend suspension or reduction event)	(Mandatory dividend suspension or reduction event) (1) When a Liquidation Event <sup>(7)</sup> , Reorganization Event <sup>(8)</sup> , Insolvency Event <sup>(9)</sup> or Governmental Action <sup>(10)</sup> has occurred to Mizuho Financial Group; (2) when Mizuho Financial Group’s Available Distributable Amounts <sup>(15)</sup> is insufficient, or dividends on its preferred stock <sup>(13)</sup> are suspended or reduced; (Optional dividend suspension or reduction event)	(Mandatory dividend suspension or reduction event) (1) When a Liquidation Event <sup>(7)</sup> , Reorganization Event <sup>(8)</sup> , Insolvency Event <sup>(9)</sup> or Governmental Action <sup>(10)</sup> has occurred to Mizuho Financial Group; (2) when Mizuho Financial Group’s Available Distributable Amounts <sup>(16)</sup> is insufficient, or dividends on its preferred stock <sup>(13)</sup> are suspended or reduced; (Optional dividend suspension or reduction event)

- |   |   |   |
|---|---|---|
| <p>(3) when the capital adequacy ratio of Mizuho Financial Group or its Tier 1 capital ratio fails to meet the minimum requirement, or would fall short as a result of the dividend payments on the MCI (JPY) 1 Preferred Securities and when Mizuho Financial Group issues a dividend suspension notice to MCI (JPY) 1; and</p> <p>(4) when Mizuho Financial Group fails to pay dividends on its common stock and issues a dividend suspension notice to MCI (JPY) 1</p> | <p>(3) when the capital adequacy ratio of Mizuho Financial Group or its Tier 1 capital ratio fails to meet the minimum requirement, or would fall short as a result of the dividend payments on the MCI (JPY) 2 Preferred Securities and when Mizuho Financial Group issues a dividend suspension notice to MCI (JPY) 2; and</p> <p>(4) when Mizuho Financial Group fails to pay dividends on its common stock and issues a dividend suspension notice to MCI (JPY) 2</p> | <p>(3) when the capital adequacy ratio of Mizuho Financial Group or its Tier 1 capital ratio fails to meet the minimum requirement, or would fall short as a result of the dividend payments on the MCI (JPY) 3 Preferred Securities and when Mizuho Financial Group issues a dividend suspension notice to MCI (JPY) 3; and</p> <p>(4) when Mizuho Financial Group fails to pay dividends on its common stock and issues a dividend suspension notice to MCI (JPY) 3</p> |
|---|---|---|

<b>Mandatory dividend event</b>	<p>If Mizuho Financial Group pays any dividends on its common stock to holders of record as of a prescribed record date in the immediately preceding fiscal year, dividend payments for the full amount of MCI (JPY) 1 Preferred Securities must be made on dividend payment dates during the subsequent fiscal year; provided that no event for the mandatory suspension or reduction of dividends has occurred and that no dividend suspension notice has been issued in conjunction with the occurrence of an optional dividend suspension or reduction event.</p>	<p>If Mizuho Financial Group pays any dividends on its common stock to holders of record as of a prescribed record date in the immediately preceding fiscal year, dividend payments for the full amount of MCI (JPY) 2 Preferred Securities must be made on dividend payment dates during the subsequent fiscal year; provided that no event for the mandatory suspension or reduction of dividends has occurred and that no dividend suspension notice has been issued in conjunction with the occurrence of an optional dividend suspension or reduction event.</p>	<p>If Mizuho Financial Group pays any dividends on its common stock to holders of record as of a prescribed record date in the immediately preceding fiscal year, dividend payments for the full amount of MCI (JPY) 3 Preferred Securities must be made on dividend payment dates during the subsequent fiscal year; provided that no event for the mandatory suspension or reduction of dividends has occurred and that no dividend suspension notice has been issued in conjunction with the occurrence of an optional dividend suspension or reduction event.</p>
<b>Distributable amounts limitation</b>	<p>Dividends for the MCI (JPY) 1 preferred securities are paid to the extent of Mizuho Financial Group's Available Distributable Amounts<sup>(14)</sup>.</p>	<p>Dividends for the MCI (JPY) 2 preferred securities are paid to the extent of Mizuho Financial Group's Available Distributable Amounts<sup>(15)</sup>.</p>	<p>Dividends for the MCI (JPY) 3 preferred securities are paid to the extent of Mizuho Financial Group's Available Distributable Amounts<sup>(16)</sup>.</p>
<b>Dividend limitations</b>	<p>When dividends on Mizuho Financial Group's Preferred Stock<sup>(13)</sup> are reduced, dividends on MCI (JPY) 1 Preferred securities are also reduced by an equal percentage.</p>	<p>When dividends on Mizuho Financial Group's Preferred Stock<sup>(13)</sup> are reduced, dividends on MCI (JPY) 2 Preferred securities are also reduced by an equal percentage.</p>	<p>When dividends on Mizuho Financial Group's Preferred Stock<sup>(13)</sup> are reduced, dividends on MCI (JPY) 3 Preferred securities are also reduced by an equal percentage.</p>
<b>Claims for residual assets</b>	<p>Same priority as Mizuho Financial Group's Preferred Stock<sup>(13)</sup></p>	<p>Same priority as Mizuho Financial Group's Preferred Stock<sup>(13)</sup></p>	<p>Same priority as Mizuho Financial Group's Preferred Stock<sup>(13)</sup></p>



<b>Issuer</b>	Mizuho Capital Investment (JPY) 4 Limited (“MCI (JPY) 4,” and the preferred securities described below are referred to as “MCI (JPY) 4 Preferred Securities.”)	Mizuho Capital Investment (USD) 2 Limited (“MCI (USD) 2,” and the preferred securities described below are referred to as “MCI (USD) 2 Preferred Securities.”)	Mizuho Capital Investment (JPY) 5 Limited (“MCI (JPY) 5,” and the preferred securities described below (Series A, Series B and Series C) are collectively referred to as “MCI (JPY) 5 Preferred Securities.”)
<b>Type of securities</b>	Non-cumulative perpetual preferred securities	Non-cumulative perpetual preferred securities	Non-cumulative perpetual preferred securities
<b>Mandatory redemption date</b>	None	None	None
<b>Optional redemption</b>	Starting from the dividend payment date falling in June 2015, optionally redeemable on each dividend payment date (subject to prior approval from regulatory authorities)	Starting from the dividend payment date falling in June 2014, optionally redeemable on each dividend payment date (subject to prior approval from regulatory authorities)	Series A Starting from the dividend payment date falling in June 2014, optionally redeemable on each dividend payment date (subject to prior approval from regulatory authorities) Series B Starting from the dividend payment date falling in June 2015, optionally redeemable on each dividend payment date (subject to prior approval from regulatory authorities) Series C Starting from the dividend payment date falling in June 2015, optionally redeemable on each dividend payment date (subject to prior approval from regulatory authorities)
<b>Dividends</b>	Fixed dividend rate for the first seven years (although a floating dividend rate is applied with respect to dividend payment dates after June 2015. No dividend rate step-up. Dividend payments that are suspended are non-cumulative.)	Fixed dividend rate for the first five years (although a floating dividend rate is applied with respect to dividend payment dates after June 2014. No dividend rate step-up. Dividend payments that are suspended are non-cumulative.)	Series A Fixed dividend rate for the first five years (although a floating dividend rate is applied with respect to dividend payment dates after June 2014. No dividend rate step-up. Dividend payments that are suspended are non-cumulative.) Series B Fixed dividend rate for the first six years (although a floating dividend rate is applied with respect to dividend payment dates after June 2015. No dividend rate step-up. Dividend payments that are suspended are non-cumulative.) Series C Fixed dividend rate for the first six years (although a floating dividend rate is applied with respect to dividend payment dates after June 2015. No dividend rate step-up. Dividend payments that are suspended are non-cumulative.)

<b>Dividend payment date</b>	March 31, 2009 and June 30th and December 30th of each year	June 30th and December 30th of each year	June 30th and December 30th of each year
<b>Total amount issued</b>	¥355 billion	\$850 million	Series A ¥139.5 billion Series B ¥72.5 billion Series C ¥25.0 billion
<b>Issue date</b>	December 29, 2008	February 27, 2009	Series A June 30, 2009 Series B August 31, 2009 Series C September 29, 2009

<p><b>Dividend suspension events</b></p>	<p>(Mandatory dividend suspension or reduction event)</p> <p>(1) When a Liquidation Event<sup>(7)</sup>, Reorganization Event<sup>(8)</sup>, Insolvency Event<sup>(9)</sup> or Governmental Action<sup>(10)</sup> has occurred to Mizuho Financial Group;</p> <p>(2) when Mizuho Financial Group's Available Distributable Amounts<sup>(17)</sup> is insufficient, or dividends on its preferred stock<sup>(13)</sup> are suspended or reduced;</p> <p>(Optional dividend suspension or reduction event)</p> <p>(3) when the capital adequacy ratio of Mizuho Financial Group or its Tier 1 capital ratio fails to meet the minimum requirement, or would fall short as a result of the dividend payments on the MCI (JPY) 4 Preferred Securities and when Mizuho Financial Group issues a dividend suspension notice to MCI (JPY) 4; and</p> <p>(4) when Mizuho Financial Group fails to pay dividends on its common stock and issues a dividend suspension notice to MCI (JPY) 4</p>	<p>(Mandatory dividend suspension or reduction event)</p> <p>(1) When a Liquidation Event<sup>(7)</sup>, Reorganization Event<sup>(8)</sup>, Insolvency Event<sup>(9)</sup> or Governmental Action<sup>(10)</sup> has occurred to Mizuho Financial Group;</p> <p>(2) when Mizuho Financial Group's Available Distributable Amounts<sup>(18)</sup> is insufficient, or dividends on its preferred stock<sup>(13)</sup> are suspended or reduced;</p> <p>(Optional dividend suspension or reduction event)</p> <p>(3) when the capital adequacy ratio of Mizuho Financial Group or its Tier 1 capital ratio fails to meet the minimum requirement, or would fall short as a result of the dividend payments on the MCI (USD) 2 Preferred Securities and when Mizuho Financial Group issues a dividend suspension notice to MCI (USD) 2; and</p> <p>(4) when Mizuho Financial Group fails to pay dividends on its common stock and issues a dividend suspension notice to MCI (USD) 2</p>	<p>(Mandatory dividend suspension or reduction event)</p> <p>(1) When a Liquidation Event<sup>(7)</sup>, Reorganization Event<sup>(8)</sup>, Insolvency Event<sup>(9)</sup> or Governmental Action<sup>(10)</sup> has occurred to Mizuho Financial Group;</p> <p>(2) when Mizuho Financial Group's Available Distributable Amounts<sup>(19)</sup> is insufficient, or dividends on its preferred stock<sup>(13)</sup> are suspended or reduced;</p> <p>(Optional dividend suspension or reduction event)</p> <p>(3) when the capital adequacy ratio of Mizuho Financial Group or its Tier 1 capital ratio fails to meet the minimum requirement, or would fall short as a result of the dividend payments on the MCI (JPY) 5 Preferred Securities and when Mizuho Financial Group issues a dividend suspension notice to MCI (JPY) 5; and</p> <p>(4) when Mizuho Financial Group fails to pay dividends on its common stock and issues a dividend suspension notice to MCI (JPY) 5</p>
<p><b>Mandatory dividend event</b></p>	<p>If Mizuho Financial Group pays any dividends on its common stock to holders of record as of a prescribed record date in the immediately preceding fiscal year, dividend payments for the full amount of MCI (JPY) 4 Preferred Securities must be made on dividend payment dates during the subsequent fiscal year; provided that no event for the mandatory suspension or reduction of dividends has occurred and that no dividend suspension notice has been issued in conjunction with the occurrence of an optional dividend suspension or reduction event.</p>	<p>If Mizuho Financial Group pays any dividends on its common stock to holders of record as of a prescribed record date in the immediately preceding fiscal year, dividend payments for the full amount of MCI (USD) 2 Preferred Securities must be made on dividend payment dates during the subsequent fiscal year; provided that no event for the mandatory suspension or reduction of dividends has occurred and that no dividend suspension notice has been issued in conjunction with the occurrence of an optional dividend suspension or reduction event.</p>	<p>If Mizuho Financial Group pays any dividends on its common stock to holders of record as of a prescribed record date in the immediately preceding fiscal year, dividend payments for the full amount of MCI (JPY) 5 Preferred Securities must be made on dividend payment dates during the subsequent fiscal year; provided that no event for the mandatory suspension or reduction of dividends has occurred and that no dividend suspension notice has been issued in conjunction with the occurrence of an optional dividend suspension or reduction event.</p>
<p><b>Distributable amounts limitation</b></p>	<p>Dividends for the MCI (JPY) 4 preferred securities are paid to the extent of Mizuho Financial Group's Available Distributable Amounts<sup>(17)</sup>.</p>	<p>Dividends for the MCI (USD) 2 preferred securities are paid to the extent of Mizuho Financial Group's Available Distributable Amounts<sup>(18)</sup>.</p>	<p>Dividends for the MCI (JPY) 5 preferred securities are paid to the extent of Mizuho Financial Group's Available Distributable Amounts<sup>(19)</sup>.</p>

**Dividend limitations**

When dividends on Mizuho Financial Group's Preferred Stock<sup>(13)</sup> are reduced, dividends on MCI (JPY) 4 Preferred securities are also reduced by an equal percentage.

When dividends on Mizuho Financial Group's Preferred Stock<sup>(13)</sup> are reduced, dividends on MCI (USD) 2 Preferred securities are also reduced by an equal percentage.

When dividends on Mizuho Financial Group's Preferred Stock<sup>(13)</sup> are reduced, dividends on MCI (JPY) 5 Preferred securities are also reduced by an equal percentage.

**Claims for residual assets**

Same priority as Mizuho Financial Group's Preferred Stock<sup>(13)</sup>

Same priority as Mizuho Financial Group's Preferred Stock<sup>(13)</sup>

Same priority as Mizuho Financial Group's Preferred Stock<sup>(13)</sup>

---

Notes:

(1) Loss Absorption Certificate

Refers to a certificate that Mizuho Financial Group delivers to the issuer (in case of the loss absorption event set forth in clause (iv) below, the issuance thereof is at our discretion) upon any of the following events with respect to Mizuho Financial Group: (i) liquidation event that shall be deemed to occur where a liquidation proceeding is commenced by or against Mizuho Financial Group or a competent court in Japan shall have (a) adjudicated Mizuho Financial Group to be subject to bankruptcy proceedings or (b) approved a preparation of a reorganization plan for abolishment of all business of Mizuho Financial Group; (ii) reorganization event that shall be deemed to occur if a competent court in Japan shall have adjudicated (a) the commencement of a corporate reorganization proceeding of Mizuho Financial Group under the Corporate Reorganization Law or (b) the commencement of a civil rehabilitation proceeding of Mizuho Financial Group under the Civil Rehabilitation Law; (iii) governmental action that shall be deemed to occur if the government authority in Japan (a) publicly declares Mizuho Financial Group is not able to pay its debts as they become due, (b) publicly declares Mizuho Financial Group's liabilities exceed its assets, (c) publicly declares Mizuho Financial Group to be under public management or (d) issues an order that Mizuho Financial Group be transferred to a third party; (iv) inadequate ratio event that shall be deemed to occur if capital adequacy ratio or Tier 1 capital ratio fails to meet the minimum requirement or would fall short as a result of a dividend payment on the relevant preferred securities; (v) default event that shall be deemed to occur if Mizuho Financial Group is not able to pay its debts as they become due or would not be able to do so as a result of a dividend payment on the relevant preferred securities; or (vi) insolvency event shall be deemed to occur if the liabilities of Mizuho Financial Group exceeds its assets or would exceed its assets as a result of a dividend payment on the relevant preferred securities.

(2) Preferred Stock

Refers to preferred stock of Mizuho Financial Group qualifying as Tier 1 capital and ranking most senior compared to other preferred stock of Mizuho Financial Group as to dividend payments. It includes such preferred stocks that are issued in the future.

(3) Available Distributable Amounts

Refers to the maximum amount available for dividends ("Distributable Amounts") calculated based on the immediately preceding fiscal year's financial statements, less the aggregate amount of dividends paid previously during the current fiscal year and scheduled to be paid thereafter in respect of such fiscal year in respect of any Preferred Stock (provided that each interim dividend payment on Preferred Stock to be paid during such current Fiscal Year shall be excluded in calculating Available Distributable Amounts). Notwithstanding the foregoing, if there are securities issued by a company other than Mizuho Financial Group of which the rights to dividends and the rights at the time of liquidation, etc., are determined by reference to the financial condition and results of operation of Mizuho Financial Group and which rank, in relation to MPC1, equal in point of subordination as the Parity Preferred Securities<sup>(6)</sup> ("Parallel Preferred Securities"), the Available Distributable Amounts are adjusted as follows:

$$\text{Available Distributable Amounts after the adjustment} = \text{Available Distributable Amounts} \times \left( \frac{\text{Total of full dividend payment amount for Parity Preferred Securities}^{(6)} \text{ in such fiscal year}}{\text{Total of full dividend payment amount for Parity Preferred Securities}^{(6)} \text{ in such fiscal year} + \text{Total amount of full dividend payment amount for Parallel Securities in such fiscal year}} \right)$$

(4) Distributable Amounts Limitation Certificate

Refers to a certificate issued by Mizuho Financial Group on or before the annual general meeting of shareholders to issuers if Available Distributable Amounts falls short of total dividends to be paid on the dividend payment date, which shall set forth the Available Distributable Amounts of such fiscal year.

(5) Mandatory Dividend Payment Date

Refers to a dividend payment date in June of a calendar year when a fiscal year of Mizuho Financial Group ends with respect to which it paid dividends on its common stock.

(6) Parity Preferred Securities

Refers to the collective designation for preferred securities and MPC1 Preferred Securities issued by MPC1 which are perpetual and the dividend payment dates and the use of proceeds are the same as that of the relevant MPC1 Preferred Securities. (As to MPC1, for example, Parity Preferred Securities are the collective designation of MPC1 Preferred Securities as well as other preferred securities that satisfy the above conditions if newly issued in the future.)

(7) Liquidation Event

Shall be deemed to occur where a liquidation proceeding is commenced by or against Mizuho Financial Group or a competent court in Japan shall have (i) adjudicated Mizuho Financial Group to be subject to bankruptcy proceedings or (ii) approved a preparation of a reorganization plan for abolishment of all business of Mizuho Financial Group.

(8) Reorganization Event

Shall be deemed to occur if a competent court in Japan shall have adjudicated (i) the commencement of a corporate reorganization proceeding of Mizuho Financial Group under the Corporate Reorganization Law or (ii) the commencement of a civil rehabilitation proceeding of Mizuho Financial Group under the Civil Rehabilitation Law.

(9) Insolvency Event

Shall be deemed to occur if (i) Mizuho Financial Group is not able to pay its debts as they become due or would not be able to do so as a result of a dividend payment on the relevant preferred securities, or (ii) if the liabilities of Mizuho Financial Group exceeds its assets or would exceed its assets as a result of a dividend payment on the relevant preferred securities.

(10) Governmental Action

Shall be deemed to occur if the government authority in Japan (i) publicly declares Mizuho Financial Group is not able to pay its debts as they become due, (ii) publicly declares Mizuho Financial Group's liabilities exceed its assets, (iii) publicly declares Mizuho Financial Group to be under public management or (iv) issues an order that Mizuho Financial Group be transferred to a third party.

(11) Available Distributable Amounts for MCI (USD) 1 Preferred Securities

(i) Amount available in June

Refers to Distributable Amounts of Mizuho Financial Group calculated based on the financial statements for the immediately preceding fiscal year, less the amount of dividend payments on Preferred Stock<sup>(13)</sup> (excluding interim dividend payments), pro-rated between the full dividend amount on MCI (USD) 1 Preferred Securities and the full dividend amount on preferred securities that are equivalently subordinated in nature with MCI (USD) 1 Preferred Securities ("Equivalent Securities") to which dividends are paid in whole or in part or declared to be paid on or prior to the relevant dividend payment date of MCI (USD) 1 Preferred Securities.

(ii) Amount available in December

Refers to Distributable Amounts of Mizuho Financial Group calculated based on the financial statements for the immediately preceding fiscal year, less (A) the amount of dividend payments on Preferred Stock<sup>(13)</sup> (excluding interim dividend payments), (B) the amount of dividend payments on MCI (USD) 1 Preferred Securities made or declared to be made on or prior to the dividend payment date falling in June and (C) the dividends on Equivalent Securities paid or declared to be paid on or prior to the dividend payment date falling in June, pro-rated between full dividends on MCI (USD) 1 Preferred Securities for the dividend payment date falling in December and full dividends on Equivalent Securities paid in whole or in part or declared to be paid from the day after the dividend payment date of MCI (USD) 1 Preferred Securities falling in June up to the dividend payment date falling in December.

(12) Available Distributable Amounts for MCI (EUR) 1 Preferred Securities

(Up to the dividend payment date falling in June 2011)

Refers to Distributable Amounts of Mizuho Financial Group calculated based on the financial statements for the immediately preceding fiscal year, less the amount of dividend payments on Preferred Stock<sup>(13)</sup> (excluding interim dividend payments), pro-rated between the full dividend payment amount on MCI (EUR) 1 Preferred Securities and the full dividend payment amount on preferred securities for the then current fiscal year that are equivalently subordinated in nature with MCI (EUR) 1 Preferred Securities ("Equivalent Securities").

(From the dividend payment date falling in December 2011)

(i) Amount available in June

Refers to Distributable Amounts of Mizuho Financial Group calculated based on the financial statements for the immediately preceding fiscal year, less the amount of dividend payments on Preferred Stock<sup>(13)</sup> (excluding interim dividend payments), pro-rated between the full dividend payment amount on MCI (EUR) 1 Preferred Securities and the full dividend amount on Equivalent Securities to which dividends are paid in whole or in part or declared to be paid on or prior to the relevant dividend payment date of MCI (EUR) 1 Preferred Securities.

(ii) Amount available in December

Refers to Distributable Amounts of Mizuho Financial Group calculated based on the financial statements for the immediately preceding fiscal year, less (A) the amount of dividend payments on Preferred Stock<sup>(13)</sup> (excluding interim dividend payments),

(B) the amount of dividend payments on MCI (EUR) 1 Preferred Securities made or declared to be made on or prior to the dividend payment date falling in June and (C) the dividends on Equivalent Securities paid or declared to be paid on or prior to the dividend payment date falling in June, pro-rated between full dividends on MCI (EUR) 1 Preferred Securities for the dividend payment date falling in December and full dividends on Equivalent Securities paid in whole or in part or declared to be paid from the day after the dividend payment date of MCI (EUR) 1 Preferred Securities falling in June up to the dividend payment date falling in December.

(13) Preferred Stocks

Refers to preferred stock of Mizuho Financial Group qualifying as Tier 1 capital and ranking most senior compared to other preferred stock of Mizuho Financial Group as to dividend payments and claims to residual assets.

(14) Available Distributable Amounts for the MCI (JPY) 1 Preferred Securities

(i) Amount available in June

Refers to Distributable Amounts of Mizuho Financial Group calculated based on the financial statements for the immediately preceding fiscal year, less the amount of dividend payments on Preferred Stock<sup>(13)</sup> (excluding interim dividend payments), pro-rated between the full dividend amount on MCI (JPY) 1 Preferred Securities and the full dividend amount on preferred securities that are equivalently subordinated in nature with MCI (JPY) 1 Preferred Securities (“Equivalent Securities”) to which dividends are paid in whole or in part or declared to be paid on or prior to the relevant dividend payment date of MCI (JPY) 1 Preferred Securities.

(ii) Amount available in December

Refers to Distributable Amounts of Mizuho Financial Group calculated based on the financial statements for the immediately preceding fiscal year, less (A) the amount of dividend payments on Preferred Stock<sup>(13)</sup> (excluding interim dividend payments), (B) the amount of dividend payments on MCI (JPY) 1 Preferred Securities made or declared to be made on or prior to the dividend payment date falling in June and (C) the dividends on Equivalent Securities paid or declared to be paid on or prior to the dividend payment date in June, pro-rated between full dividends on MCI (JPY) 1 Preferred Securities for the dividend payment date falling in December and full dividends on Equivalent Securities paid in whole or in part or declared to be paid from the day after the dividend payment date of MCI (JPY) 1 Preferred Securities falling in June up to the dividend payment date falling in December.

(15) Available Distributable Amounts for the MCI (JPY) 2 Preferred Securities

(i) Amount available in June

Refers to Distributable Amounts of Mizuho Financial Group calculated based on the financial statements for the immediately preceding fiscal year, less the amount of dividend payments on Preferred Stock<sup>(13)</sup> (excluding interim dividend payments), pro-rated between the full dividend amount on MCI (JPY) 2 Preferred Securities and the full dividend amount on preferred securities that are equivalently subordinated in nature with MCI (JPY) 2 Preferred Securities (“Equivalent Securities”) to which dividends are paid in whole or in part or declared to be paid on or prior to the relevant dividend payment date of MCI (JPY) 2 Preferred Securities.

(ii) Amount available in December

Refers to Distributable Amounts of Mizuho Financial Group calculated based on the financial statements for the immediately preceding fiscal year, less (A) the amount of dividend payments on Preferred Stock<sup>(13)</sup> (excluding interim dividend payments), (B) the amount of dividend payments on MCI (JPY) 2 Preferred Securities made or declared to be made on or prior to the dividend payment date falling in June and (C) the dividends on Equivalent Securities paid or declared to be paid on or prior to the dividend payment date in June, pro-rated between full dividends on MCI (JPY) 2 Preferred Securities for the dividend payment date falling in December and full dividends on Equivalent Securities paid in whole or in part or declared to be paid from the day after the dividend payment date of MCI (JPY) 2 Preferred Securities falling in June up to the dividend payment date falling in December.

(16) Available Distributable Amounts for the MCI (JPY) 3 Preferred Securities

(i) Amount available in June

Refers to Distributable Amounts of Mizuho Financial Group calculated based on the financial statements for the immediately preceding fiscal year, less the amount of dividend payments on Preferred Stock<sup>(13)</sup> (excluding interim dividend payments), pro-rated between the full dividend amount on MCI (JPY) 3 Preferred Securities and the full dividend amount on preferred securities that are equivalently subordinated in nature with MCI (JPY) 3 Preferred Securities (“Equivalent Securities”) to which dividends are paid in whole or in part or declared to be paid on or prior to the relevant dividend payment date of MCI (JPY) 3 Preferred Securities.

(ii) Amount available in December (except for the amount available in December 2008)

Refers to Distributable Amounts of Mizuho Financial Group calculated based on the financial statements for the immediately preceding fiscal year, less (A) the amount of dividend payments on Preferred Stock<sup>(13)</sup> (excluding interim dividend payments), (B) the amount of dividend payments on MCI (JPY) 3 Preferred Securities made or declared to be made on or prior to the dividend payment date falling in June and (C) the dividends on Equivalent Securities paid or declared to be paid on or prior to the dividend payment date in June, pro-rated between full dividends on MCI (JPY) 3 Preferred Securities for the dividend payment date falling in December and full dividends on Equivalent Securities paid in whole or in part or declared to be paid from the day after the dividend payment date of MCI (JPY) 3 Preferred Securities falling in June up to the dividend payment date falling in December.

(iii) Amount available in December 2008



Refers to Distributable Amounts of Mizuho Financial Group calculated based on the financial statements for the immediately preceding fiscal year, less (A) the amount of dividend payments on Preferred Stock<sup>(13)</sup> (excluding interim dividend payments) and (B) the dividends on Equivalent Securities paid or declared to be paid from April 1, 2008 to June 30, 2008, pro-rated between full dividends on MCI (JPY) 3 Preferred Securities for the dividend payment date falling in December 2008 and full dividends on Equivalent Securities paid in whole or in part or declared to be paid from the day after June 30, 2008 up to the dividend payment date falling in December 2008.

(17) Available Distributable Amounts for the MCI (JPY) 4 Preferred Securities

(i) Amount available in March 2009

Refers to Distributable Amounts of Mizuho Financial Group calculated based on the financial statements for the fiscal year ended March 31, 2008, less (A) the amount of dividend payments on Preferred Stock<sup>(13)</sup> (excluding interim dividend payments) and (B) the dividends on Equivalent Securities paid or declared to be paid from April 1, 2008 to December 30, 2008, pro-rated between the full dividend amount on MCI (JPY) 4 Preferred Securities and the full dividend amount on preferred securities that are equivalently subordinated in nature with MCI (JPY) 4 Preferred Securities (“Equivalent Securities”) to which dividends are paid in whole or in part or declared to be paid from the day after December 30, 2008 up to the dividend payment date falling in March 2009.

(ii) Amount available in June

Refers to Distributable Amounts of Mizuho Financial Group calculated based on the financial statements for the immediately preceding fiscal year, less the amount of dividend payments on Preferred Stock<sup>(13)</sup> (excluding interim dividend payments), pro-rated between the full dividend amount on MCI (JPY) 4 Preferred Securities and the full dividend amount on Equivalent Securities to which dividends are paid in whole or in part or declared to be paid on or prior to the relevant dividend payment date of MCI (JPY) 4 Preferred Securities.

(iii) Amount available in December

Refers to Distributable Amounts of Mizuho Financial Group calculated based on the financial statements for the immediately preceding fiscal year, less (A) the amount of dividend payments on Preferred Stock<sup>(13)</sup> (excluding interim dividend payments), (B) the amount of dividend payments on MCI (JPY) 4 Preferred Securities made or declared to be made on or prior to the dividend payment date falling in June and (C) the dividends on Equivalent Securities paid or declared to be paid on or prior to the dividend payment date in June, pro-rated between full dividends on MCI (JPY) 4 Preferred Securities for the dividend payment date falling in December and full dividends on Equivalent Securities paid in whole or in part or declared to be paid from the day after the dividend payment date of MCI (JPY) 4 Preferred Securities falling in June up to the dividend payment date falling in December.

(18) Available Distributable Amounts for the MCI (USD) 2 Preferred Securities

(i) Amount available in June

Refers to Distributable Amounts of Mizuho Financial Group calculated based on the financial statements for the immediately preceding fiscal year, less the amount of dividend payments on Preferred Stock<sup>(13)</sup> (excluding interim dividend payments), pro-rated between the full dividend amount on MCI (USD) 2 Preferred Securities and the full dividend amount on preferred securities that are equivalently subordinated in nature with MCI (USD) 2 Preferred Securities (“Equivalent Securities”) to which dividends are paid in whole or in part or declared to be paid on or prior to the relevant dividend payment date of MCI (USD) 2 Preferred Securities.

(ii) Amount available in December

Refers to Distributable Amounts of Mizuho Financial Group calculated based on the financial statements for the immediately preceding fiscal year, less (A) the amount of dividend payments on Preferred Stock<sup>(13)</sup> (excluding interim dividend payments), (B) the amount of dividend payments on MCI (USD) 2 Preferred Securities made or declared to be made on or prior to the dividend payment date falling in June and (C) the dividends on Equivalent Securities paid or declared to be paid on or prior to the dividend payment date in June, pro-rated between full dividends on MCI (USD) 2 Preferred Securities for the dividend payment date falling in December and full dividends on Equivalent Securities paid in whole or in part or declared to be paid from the day after the dividend payment date of MCI (USD) 2 Preferred Securities falling in June up to the dividend payment date falling in December.

(19) Available Distributable Amounts for the MCI (JPY) 5 Preferred Securities

(i) Amount available in June

Refers to Distributable Amounts of Mizuho Financial Group calculated based on the financial statements for the immediately preceding fiscal year, less the amount of dividend payments on Preferred Stock<sup>(13)</sup> (excluding interim dividend payments), pro-rated between the full dividend amount on MCI (JPY) 5 Preferred Securities and the full dividend amount on preferred securities that are equivalently subordinated in nature with MCI (JPY) 5 Preferred Securities (“Equivalent Securities”) to which dividends are paid in whole or in part or declared to be paid on or prior to the relevant dividend payment date of MCI (JPY) 5 Preferred Securities.

(ii) Amount available in December (except for the amount available in December 2009)

Refers to Distributable Amounts of Mizuho Financial Group calculated based on the financial statements for the immediately preceding fiscal year, less (A) the amount of dividend payments on Preferred Stock<sup>(13)</sup> (excluding interim dividend

payments), (B) the amount of dividend payments on MCI (JPY) 5 Preferred Securities made or declared to be made on or prior to the dividend payment date falling in June and (C) the dividends on Equivalent Securities paid or declared to be paid on or prior to the dividend payment date in June, pro-rated between full dividends on MCI (JPY) 5 Preferred Securities for the dividend payment date falling in December and full dividends on Equivalent Securities paid in whole or in part or declared to be paid from the day after the dividend payment date of MCI (JPY) 5 Preferred Securities falling in June up to the dividend payment date falling in December.

(iii) Amount available in December 2009

Refers to Distributable Amounts of Mizuho Financial Group calculated based on the financial statements for the fiscal year ended March 31, 2009, less (A) the amount of dividend payments on Preferred Stock<sup>(13)</sup> (excluding interim dividend payments) and (B) the dividends on Equivalent Securities paid or declared to be paid from April 1, 2009 to June 30, 2009, pro-rated between full dividends on MCI (JPY) 5 Preferred Securities for the dividend payment date falling in December 2009 and full dividends on Equivalent Securities paid in whole or in part or declared to be paid from the day after June 30, 2009 up to the dividend payment date falling in December 2009.

## (B) Summary of preferred stock

The preferred stocks that have been issued as stated below are included in Tier 1 capital of Mizuho Financial Group's consolidated capital adequacy ratio.

	<u>Eleventh Series Class XI Preferred Stock</u>	<u>Thirteenth Series Class XIII Preferred Stock</u>
<b>Amount outstanding as of fiscal year end (excluding treasury stock)</b>	¥499.281 billion	¥36.69 billion
<b>Preferred dividend payment</b>	An annual dividend payment of ¥20 per preferred share to holders of preferred stock in priority to dividend payments to holders of common stock.	An annual dividend payment of ¥30 per preferred share to holders of preferred stock in priority to dividend payments to holders of common stock.
<b>Non-cumulative clause</b>	In the event that all or part of the preferred dividends are not paid during a given fiscal year, the shortfall is not accumulated in or beyond the following fiscal year.	In the event that all or part of the preferred dividends are not paid during a given fiscal year, the shortfall is not accumulated in or beyond the following fiscal year.
<b>Non-participation clause</b>	No distribution of surplus exceeding the preferred dividend payment is made to holders of preferred stock.	No distribution of surplus exceeding the preferred dividend payment is made to holders of preferred stock.
<b>Preferred interim dividend payment</b>	If an interim dividend payment is made, ¥10 per share is to be paid in priority to holders of common stock.	If an interim dividend payment is made, ¥15 per share is to be paid in priority to holders of common stock.
<b>Distribution of residual assets</b>	¥1,000 per preferred share is to be paid in priority to holders of common stock and no other distribution of residual assets is to be made.	¥1,000 per preferred share is to be paid in priority to holders of common stock and no other distribution of residual assets is to be made.
<b>Conversion<sup>(1)</sup> request</b>		
<b>Conversion period</b>	From July 1, 2008 to June 30, 2016.	n.a.
<b>Conversion price</b>	¥303.50 (As of July 1, 2010)	n.a.
<b>Reset of conversion price</b>	On July 1 of each year from July 1, 2009 to July 1, 2015 (hereafter, "Conversion Price Reset Date"), in the event the market price of common stock on such date is below the effective conversion price on the day before the relevant Conversion Price Reset Date, the reset price is to be adjusted as of the relevant Conversion Price Reset Date to such market price (minimum: ¥303.50), where market price is defined as the average of the daily closing prices of common stock as reported by the Tokyo Stock Exchange for the 30 consecutive trading days commencing on the 45th trading day prior to the Conversion Price Reset Date.	n.a.
<b>Adjustment of the conversion price</b>	Adjustments to the conversion price are to be made upon the issuance or disposition of common stock at a price lower than the market price and in other specified circumstances.	n.a.
<b>Number of shares of common stock to be provided upon</b>	The number obtained by dividing (i) the total issue price of the preferred stock submitted in connection with the conversion request by the holders of such	n.a.

**conversion**

preferred stock by (ii) the conversion price.

**Mandatory conversion of preferred stock**

Mizuho Financial Group shall acquire on July 1, 2016 any preferred stock in respect of which a request for conversion has not been made by June 30, 2016 and deliver common stock to the holder of such preferred stock. The number of shares of common stock to be delivered is obtained by dividing ¥1,000 by the average of the daily closing prices of common stock as reported by the Tokyo Stock Exchange for the 30 consecutive trading days commencing on the 45th trading day prior to July 1, 2016 (minimum: ¥303.50).

n.a.

**Conversion clause**

n.a.

On or after April 1, 2013, as determined by a resolution of the general meeting of shareholders, all or a portion of the preferred stock can be repurchased at the conversion price set forth below. The conversion price per share will be the sum of ¥1,000 and the preferred dividend pro-rated for the number of days from the first day of the fiscal year during which the conversion date falls; provided, however, that if preferred interim dividends are paid, the conversion price per share is to be reduced by the amount of such interim dividend.

**Voting rights**

The holders of preferred stock shall not have voting rights at a general meeting of shareholders; provided, however, that the holders of preferred stock may have voting rights from the date of a general meeting of shareholders if a proposal for the payment of preferred dividends is not submitted to such general meeting of shareholders, or immediately after the closing of a general meeting of shareholders if a proposal on the preferred dividends is rejected at such general meeting of shareholders, until, in either case, such time as a resolution of a general meeting of shareholders for the payment of preferred dividends is approved.

The holders of preferred stock shall not have voting rights at a general meeting of shareholders; provided, however, that the holders of preferred stock may have voting rights from the date of a general meeting of shareholders if a proposal for the payment of preferred dividends is not submitted to such general meeting of shareholders, or immediately after the closing of a general meeting of shareholders if a proposal on the preferred dividends is rejected at such general meeting of shareholders, until, in either case, such time as a resolution of a general meeting of shareholders for the payment of preferred dividends is approved.

**Preferential status**

All classes of preferred stock rank *pari passu* with respect to preferred dividends, preferred interim dividends and residual assets.

All classes of preferred stock rank *pari passu* with respect to preferred dividends, preferred interim dividends and residual assets.

## **(C) Summary of debt capital instruments**

### 1. Summary

The following debt capital instruments are included in Tier 2 capital:

- Perpetual subordinated debt;
- Dated subordinated debt; and
- Dated preferred stock.

Of the above, perpetual subordinated debt and dated subordinated debt are in the form of subordinated bonds with subordination clause (corporate bonds with subordination clause) or subordinated loans (borrowing by means of loan agreement with subordination clause) (collectively, “Subordinated Bonds, Etc.”). Specifically, such debt capital is raised as follows:

- (1) Subordinated bonds offered to investors in Japan and abroad;
- (2) Subordinated bonds using a Euro MTN program, etc.; and
- (3) Subordinated loans.

The Subordinated Bonds, Etc., are issued by or loaned to Mizuho Financial Group, its banking subsidiaries or overseas consolidated SPC subsidiaries.

In each case, the above instruments are based on terms that are in accordance with relevant public notices and supervisory guidelines of the Financial Services Agency so as to ensure eligibility as Tier 2 capital.

At present, we have no dated preferred stock outstanding.

### 2. Subordination clause

Subordinated Bonds, Etc., include subordination clauses pursuant to which, in the event that certain grounds for subordination arise, payments of principal and interest on the relevant Subordinated Bonds, Etc., are ranked lower in priority compared to the execution of obligations relating to more senior claims which are obligations other than those that rank *pari passu* or junior to such Subordinated Bonds, Etc. (concerning the rights of holders of Subordinated Bonds, Etc., that seek payment, the order of priority in receiving payments in bankruptcy proceedings is junior to subordinated bankrupt claims as set forth in the Bankruptcy Law). As a result, senior creditors have priority over holders of Subordinated Bonds, Etc., in the event of bankruptcy, corporate reorganization and civil rehabilitation proceedings, etc.

### 3. Perpetual subordinated debt

Perpetual subordinated debt is a debt capital instrument with all of the following features:

- (1) Unsecured, fully paid and subordinated to other obligations;
- (2) Not redeemable or repayable, except when it is optional and the debtor anticipates that a sufficient capital adequacy ratio will be maintained after such redemption or repayment or in connection with the raising of capital in an amount equal to or in excess of the amount to be redeemed or repaid;
- (3) Applicable to absorb losses while the obligor continues to do business; and
- (4) Contains a provision that allows a deferred payment of interest.

### 4. Dated subordinated debt

Dated subordinated debt differs from perpetual subordinated debt in that it has a fixed redemption or repayment term of more than five years.

In the case of both perpetual subordinated debt and dated subordinated debt, if a step-up in interest is provided for, the application of such step-up must be made at a time five years or more from the issue or loan date so as to prevent the interest to be paid after step-up from being excessive, and the amount of step-up must be within the limit that the Financial Services Agency determines in supervisory guidelines.

## **(4) Summary of approach to assessing capital adequacy**

In order to ensure that risk-based capital is sufficiently maintained in light of the risk held by us, we regularly conduct the following assessment of capital adequacy in addition to adopting a suitable and effective capital adequacy monitoring structure.

## **Maintaining a sufficient BIS capital adequacy ratio and Tier 1 capital ratio**

We confirm our maintenance of a high level of financial soundness by conducting regular evaluations to examine whether our risk-based capital is adequate in qualitative as well as quantitative terms, in light of our business plans and strategic targets to match the increase in risk-weighted assets acquired for growth, in addition to maintaining risk-based capital that exceeds the minimum requirements (8% under BIS standards, 4% under domestic standards).

### **Balancing risk and capital**

On the basis of the framework for allocating risk capital, after obtaining the clearest possible grasp of the group's overall risk exposure, we endeavor to control risk so as to keep it within the range of our business capacity by means of allocating capital that corresponds to the amount of risk to the business groups and units of our banking subsidiaries, etc., within the bounds of our capital, and we conduct regular assessments to ensure that a sufficient level of capital is maintained for our risk profile. When making these assessments, we examine whether an appropriate return on risk is maintained in addition to considering the effects that interest rate risk related to our banking book, credit concentration risk and stress tests have on our capital.



(5) Required capital by portfolio classification

	(Billions of yen)			
	As of March 31, 2009		As of March 31, 2010	
	EAD	Required capital	EAD	Required capital
<b>Credit risk</b>	<b>156,347.2</b>	<b>5,915.4</b>	<b>154,949.9</b>	<b>5,743.4</b>
<b>Internal ratings-based approach</b>	<b>147,534.3</b>	<b>5,610.3</b>	<b>147,120.5</b>	<b>5,462.6</b>
Corporate (except specialized lending)	55,192.8	3,445.7	49,916.2	3,253.4
Corporate (specialized lending)	2,968.4	314.3	2,755.9	327.7
Sovereign	54,333.2	64.0	61,363.4	65.3
Bank	6,557.2	188.6	4,834.2	147.1
Retail	13,144.5	552.4	13,148.9	578.8
Residential mortgage	10,555.5	366.0	10,664.9	403.3
Qualifying revolving loans	336.7	29.9	337.2	29.6
Other retail	2,252.2	156.4	2,146.7	145.9
Equities, etc.	3,538.9	425.5	3,848.4	449.1
PD/LGD approach	817.4	133.5	1,022.2	154.0
Market-based approach (simple risk weight method)	332.0	89.4	292.9	80.3
Market-based approach (internal models approach)	—	—	—	—
Transitional measure applied	2,389.5	202.6	2,533.2	214.8
Regarded-method exposure	882.1	246.7	1,094.0	306.6
Purchase receivables	2,071.3	102.0	1,999.8	81.0
Securitizations	5,645.3	80.5	4,996.1	75.1
Others	3,200.1	190.3	3,163.2	177.8
<b>Standardized approach</b>	<b>8,812.8</b>	<b>305.0</b>	<b>7,829.3</b>	<b>280.8</b>
Sovereign	3,510.6	2.1	3,354.9	5.9
Bank	2,302.8	41.2	1,529.7	27.0
Corporate	2,405.6	182.0	2,335.2	177.2
Residential mortgage	0.0	0.0	0.0	0.0
Securitizations	37.1	35.9	40.9	36.7
Others	556.5	43.6	568.3	33.9
<b>Market risk</b>	n.a.	<b>107.3</b>	n.a.	<b>103.8</b>
<b>Standardized approach</b>	n.a.	<b>64.1</b>	n.a.	<b>77.9</b>
Interest rate risk	n.a.	53.3	n.a.	54.5
Equities risk	n.a.	1.8	n.a.	15.0
Foreign exchange risk	n.a.	1.7	n.a.	1.5
Commodities risk	n.a.	7.1	n.a.	6.7
Option transactions	n.a.	—	n.a.	—
<b>Internal models approach</b>	n.a.	<b>43.2</b>	n.a.	<b>25.9</b>
<b>Operational risk</b>	n.a.	<b>278.5</b>	n.a.	<b>292.5</b>
Advanced measurement approach	n.a.	n.a.	n.a.	243.8
Gross profit allocation approach	n.a.	<b>278.5</b>	n.a.	n.a.
Basic indicator approach	n.a.	n.a.	n.a.	48.6
<b>Total required capital (consolidated)</b>	n.a.	<b>4,724.4</b>	n.a.	<b>4,549.0</b>

---

Notes:

1. EAD: Exposure at default.
2. PD: Probability of default.
3. LGD: Loss given default.
4. Required capital: For credit risk, the sum of (i) 8% of credit risk-weighted assets, (ii) expected losses and (iii) deduction from capital. For market risk, the market risk equivalent amount. For operational risk, the operational risk equivalent amount.
5. Total required capital (consolidated): 8% of the denominator of the capital adequacy ratio.
6. The major exposures included in each portfolio classification of internal ratings-based approach are as follows:

Corporate (excluding specialized lending)	Credit to corporations and sole proprietors (excluding credit to retail customers)
Corporate (specialized lending)	Credits which limit interest and principal repayment sources to cash flow derived from specific real estate, chattel, businesses, etc.
Sovereign	Credits to central governments, central banks and local governmental entities
Bank	Credits to banks and securities companies, etc.
Retail	Housing loans (residential mortgage), credit card loans (qualifying revolving retail loans) and other individual consumer loans and loans to business enterprises with total credit amount of less than ¥100 million (other retail), etc.
Equities, etc.	Capital stock, preferred securities, perpetual subordinated debt, etc. (excluding trading assets)  * The transitional measure applies to those held from September 30, 2004 or earlier, and others are applied either the PD/LGD approach or the market-based approach.
Regarded-method exposure	Investment trusts and funds, etc.
Purchase receivables	Receivables purchased from third parties excluding securities (excluding securitizations)
Securitizations	Transactions in the form of “non-recourse” or having a “senior/subordinated structure” (excluding specialized lending)

7. Since the fiscal year ended March 31, 2010, cash has been added to calculate “Others” under internal ratings-based approach. In addition, such change is also reflected in the figures as of March 31, 2009 in the above table. Further, due to this change, the tables titled (A) Breakdown by geographical area, (B) Breakdown by industry and (C) Breakdown by residual contractual maturity in (7) Credit risk exposure, etc., as of March 31, 2009 and 2010, as set forth below, reflect such change.
8. EAD calculated using the standardized approach for credit risk represents the amount before the deduction of specific reserve for possible losses on loans, reserve for possible losses on loans to restructuring countries and partial direct write-offs.

## ■ Credit risk

### (6) Credit risk management

#### • Summary of credit risk management

See pages 46 to 48 for a summary of our credit risk management policies and procedures.

We have adopted the advanced internal ratings-based approach since March 31, 2009 to calculate credit risk-weighted assets under Basel II. With regard to some business units or asset classes that are deemed to be immaterial for purposes of calculating credit risk-weighted assets, we apply the standardized approach.

We use our estimates of PD (probability of default) and LGD (loss given default) in calculating credit risk-weighted assets. In accordance with regulations, we estimate PD by using long-term averages of actual defaults, to which conservative adjustments are made, based on internal data, and make adjustments to LGD taking into account recessionary periods. We regularly perform verifications of PD and LGD through back testing and other methods. We also utilize these estimates for measuring credit risks for internal use, allocating risk capital and other purposes.

#### • Status of portfolios to which the standardized approach is applied

Eligible external credit assessment institutions used for determining the risk weight for portfolios to which the standardized approach is applied are Rating and Investment Information, Inc. (R&I) in Japan and Standard & Poor's Ratings Services (S&P) overseas.

We apply a 100% risk weight for all of our corporate exposure.

#### • Summary of our internal rating system

See pages 46 to 47 for a summary of our internal rating system and rating assignment procedures.

The following table sets forth information with respect to the definition of obligor ratings.

### Obligor ratings

Obligor ratings (major category)	Definition of ratings	Classification
A1–A3	Obligors whose certainty of debt fulfillment is very high, hence their level of credit risk is excellent.	Investment grade zone
B1–B2	Obligors whose certainty of debt fulfillment poses no problems for the foreseeable future, hence their level of credit risk is sufficient.	
C1–C3	Obligors whose certainty of debt fulfillment and their level of credit risk pose no problems for the foreseeable future.	
D1–D3	Obligors whose current certainty of debt fulfillment poses no problems, however, their resistance to future changes in business environment is low.	Non-investment grade zone
E1	Obligors who require close watching going forward because there are problems with their borrowings, such as reduced or suspended interest payments, problems with fulfillment such as de facto postponements of principal or interest payments, or problems with their financial positions as a result of their poor or unstable business conditions.	
E2		
R*	Obligors who are not yet bankrupt but are in financial difficulties and are deemed to be very likely to go bankrupt in the future because they are finding it difficult to make progress in implementing their management improvement plans (including obligors who are receiving ongoing support from financial institutions).	Default
F1		
G1	Obligors who have not yet gone legally or formally bankrupt but who are substantially bankrupt because they are in serious financial difficulties and are not deemed to be capable of restructuring.	
H1	Obligors who have already gone bankrupt, from both a legal and/or formal perspective.	

\* Including restructured loans and loans past due for three months of more

## (7) Credit risk exposure, etc.

We exclude regarded-method exposure and securitization exposure from the amount of credit risk exposure. The outstanding balance is based on exposure at default.

No significant difference exists between period-end credit risk position and the average credit risk position during the fiscal years ended March 31, 2009 and 2010.

### • Status of credit risk exposure

#### (A) Breakdown by geographical area

						(Billions of yen)
						As of March 31, 2009
	Loans, commitments and other non-OTC derivative off-balance-sheet exposures	Securities	OTC derivatives	Others	Total	
<b>Domestic</b>	<b>81,273.6</b>	<b>24,104.3</b>	<b>2,533.7</b>	<b>6,283.8</b>	<b>114,195.6</b>	
<b>Overseas</b>	<b>16,523.9</b>	<b>3,911.3</b>	<b>3,033.5</b>	<b>3,342.4</b>	<b>26,811.3</b>	
Asia	2,938.3	451.5	164.3	448.6	4,002.8	
Central and South America	1,987.5	148.3	196.8	6.1	2,338.9	
North America	6,114.8	2,072.6	943.7	2,010.7	11,142.0	
Eastern Europe	80.9	—	0.1	1.3	82.4	
Western Europe	4,077.0	1,104.9	1,596.1	809.8	7,587.9	
Others	1,325.2	133.9	132.2	65.6	1,657.1	
<b>Total</b>	<b>97,797.6</b>	<b>28,015.7</b>	<b>5,567.3</b>	<b>9,626.2</b>	<b>141,006.9</b>	
<b>Exempt portion</b>	<b>n.a.</b>	<b>n.a.</b>	<b>n.a.</b>	<b>n.a.</b>	<b>8,775.6</b>	

Notes:

1. Exempt portion represents the amount before the deduction of specific reserve for possible losses on loans, reserve for possible losses on loans to restructuring countries and partial direct write-offs, calculated using the standardized approach for business units and asset classes that are immaterial for the purpose of calculating credit risk-weighted assets.
2. Exposure to non-Japanese residents is included in "Overseas."
3. "Others" include cash, deposits, call loans, other debt purchased, money held in trust, foreign exchange assets, other assets, etc.

						(Billions of yen)
						As of March 31, 2010
	Loans, commitments and other non-OTC derivative off-balance-sheet exposures	Securities	OTC derivatives	Others	Total	
<b>Domestic</b>	<b>73,354.5</b>	<b>35,042.5</b>	<b>2,178.9</b>	<b>6,891.1</b>	<b>117,467.1</b>	
<b>Overseas</b>	<b>13,607.7</b>	<b>5,553.6</b>	<b>2,127.3</b>	<b>2,274.3</b>	<b>23,563.1</b>	
Asia	2,798.3	509.1	113.3	535.9	3,956.8	
Central and South America	1,981.3	169.8	195.6	3.5	2,350.4	
North America	4,731.6	2,851.6	679.8	1,438.1	9,701.3	
Eastern Europe	77.8	—	0.0	0.8	78.7	
Western Europe	2,895.3	1,851.1	1,056.1	203.1	6,005.9	
Others	1,123.2	171.7	82.1	92.7	1,469.8	
<b>Total</b>	<b>86,962.3</b>	<b>40,596.1</b>	<b>4,306.2</b>	<b>9,165.5</b>	<b>141,030.2</b>	
<b>Exempt portion</b>	<b>n.a.</b>	<b>n.a.</b>	<b>n.a.</b>	<b>n.a.</b>	<b>7,788.4</b>	

Notes:

1. Exempt portion represents the amount before the deduction of specific reserve for possible losses on loans, reserve for possible losses on loans to restructuring countries and partial direct write-offs, calculated using the standardized approach for business units and asset classes that are immaterial for the purpose of calculating credit risk-weighted assets.
2. Exposure to non-Japanese residents is included in "Overseas."
3. "Others" include cash, deposits, call loans, other debt purchased, money held in trust, foreign exchange assets, other assets, etc.

**(B) Breakdown by industry**

(Billions of yen)

	As of March 31, 2009				
	Loans, commitments and other non-OTC derivative off-balance-sheet exposures	Securities	OTC derivatives	Others	Total
Manufacturing	15,472.0	2,067.8	694.3	199.8	18,434.1
Construction	1,946.9	218.4	22.1	13.9	2,201.4
Real estate	7,918.1	561.4	57.0	53.1	8,589.7
Service industries	4,743.6	449.6	213.7	17.2	5,424.2
Wholesale and retail	8,190.2	590.4	746.8	364.4	9,891.8
Finance and insurance	10,186.4	1,457.2	3,066.4	1,355.3	16,065.5
Individuals	12,043.2	—	0.3	17.0	12,060.5
Others	14,949.9	4,174.7	760.5	5,786.7	25,671.9
Japanese Government; Bank of Japan	22,347.0	18,495.8	5.8	1,818.5	42,667.3
<b>Total</b>	<b>97,797.6</b>	<b>28,015.7</b>	<b>5,567.3</b>	<b>9,626.2</b>	<b>141,006.9</b>
<b>Exempt portion</b>	<b>n.a.</b>	<b>n.a.</b>	<b>n.a.</b>	<b>n.a.</b>	<b>8,775.6</b>

## Notes:

1. Exempt portion represents the amount before the deduction of specific reserve for possible losses on loans, reserve for possible losses on loans to restructuring countries and partial direct write-offs, calculated using the standardized approach for business units and asset classes that are immaterial for the purpose of calculating credit risk-weighted assets.
2. "Others" include cash, deposits, call loans, other debt purchased, money held in trust, foreign exchange assets, other assets, etc.
3. Following the revision of the Japan Standardized Industrial Classification in November 2007, partial amendment has been made to the industry classification of the fiscal year ended March 31, 2010, and such amendment is also reflected in the figures as of March 31, 2009.

(Billions of yen)

	As of March 31, 2010				
	Loans, commitments and other non-OTC derivative off-balance-sheet exposures	Securities	OTC derivatives	Others	Total
Manufacturing	13,568.8	2,326.0	620.9	198.3	16,714.1
Construction	1,605.5	224.6	18.9	10.6	1,859.7
Real estate	7,158.4	531.1	57.9	50.6	7,798.1
Service industries	4,729.2	1,077.0	181.5	86.6	6,074.6
Wholesale and retail	7,173.6	603.6	677.0	414.0	8,868.3
Finance and insurance	9,189.5	1,346.0	2,114.4	1,220.1	13,870.2
Individuals	12,003.9	—	0.3	14.9	12,019.1
Others	13,765.7	5,521.2	627.5	5,034.2	24,948.7
Japanese Government; Bank of Japan	17,767.3	28,966.2	7.6	2,135.8	48,877.1
<b>Total</b>	<b>86,962.3</b>	<b>40,596.1</b>	<b>4,306.2</b>	<b>9,165.5</b>	<b>141,030.2</b>
<b>Exempt portion</b>	<b>n.a.</b>	<b>n.a.</b>	<b>n.a.</b>	<b>n.a.</b>	<b>7,788.4</b>

## Notes:

1. Exempt portion represents the amount before the deduction of specific reserve for possible losses on loans, reserve for possible losses on loans to restructuring countries and partial direct write-offs, calculated using the standardized approach for business units and asset classes that are immaterial for the purpose of calculating credit risk-weighted assets.
2. "Others" include cash, deposits, call loans, other debt purchased, money held in trust, foreign exchange assets, other assets, etc.
3. Following the revision of the Japan Standardized Industrial Classification in November 2007, partial amendment has been made to the industry classification.

**(C) Breakdown by residual contractual maturity**

	(Billions of yen)				
	As of March 31, 2009				
	Loans, commitments and other non-OTC derivative off-balance-sheet exposures	Securities	OTC derivatives	Others	Total
Less than one year	34,163.4	8,750.1	611.8	1,424.2	44,949.7
From one year to less than three years	14,676.3	7,772.1	2,562.4	37.9	25,048.9
From three years to less than five years	11,854.1	3,354.8	1,209.7	8.1	16,426.9
Five years or more	21,898.0	4,707.3	1,077.0	24.5	27,707.1
Others	15,205.5	3,431.0	106.1	8,131.2	26,874.1
<b>Total</b>	<b>97,797.6</b>	<b>28,015.7</b>	<b>5,567.3</b>	<b>9,626.2</b>	<b>141,006.9</b>
<b>Exempt portion</b>	<b>n.a.</b>	<b>n.a.</b>	<b>n.a.</b>	<b>n.a.</b>	<b>8,775.6</b>

Notes:

1. Exempt portion represents the amount before the deduction of specific reserve for possible losses on loans, reserve for possible losses on loans to restructuring countries and partial direct write-offs, calculated using the standardized approach for business units and asset classes that are immaterial for the purpose of calculating credit risk-weighted assets.
2. "Others" include cash, deposits, call loans, other debt purchased, money held in trust, foreign exchange assets, other assets, etc.

	(Billions of yen)				
	As of March 31, 2010				
	Loans, commitments and other non-OTC derivative off-balance-sheet exposures	Securities	OTC derivatives	Others	Total
Less than one year	28,104.6	16,630.5	475.6	1,671.2	46,882.1
From one year to less than three years	15,067.7	10,608.3	1,670.3	33.1	27,379.6
From three years to less than five years	8,841.0	5,227.7	1,147.5	2.1	15,218.5
Five years or more	24,146.3	4,386.7	921.4	24.2	29,478.9
Others	10,802.4	3,742.6	91.1	7,434.7	22,071.0
<b>Total</b>	<b>86,962.3</b>	<b>40,596.1</b>	<b>4,306.2</b>	<b>9,165.5</b>	<b>141,030.2</b>
<b>Exempt portion</b>	<b>n.a.</b>	<b>n.a.</b>	<b>n.a.</b>	<b>n.a.</b>	<b>7,788.4</b>

Notes:

1. Exempt portion represents the amount before the deduction of specific reserve for possible losses on loans, reserve for possible losses on loans to restructuring countries and partial direct write-offs, calculated using the standardized approach for business units and asset classes that are immaterial for the purpose of calculating credit risk-weighted assets.
2. "Others" include cash, deposits, call loans, other debt purchased, money held in trust, foreign exchange assets, other assets, etc.

• Status of exposure past due three months or more or in default

(D) Breakdown by geographical area

(Billions of yen)					
As of March 31, 2009					
	Loans, commitments and other non-OTC derivative off-balance-sheet exposures	Securities	OTC derivatives	Others	Total
<b>Domestic</b>	<b>1,763.3</b>	<b>70.4</b>	<b>36.1</b>	<b>70.3</b>	<b>1,940.3</b>
<b>Overseas</b>	<b>225.5</b>	<b>0.2</b>	<b>2.9</b>	<b>25.9</b>	<b>254.6</b>
Asia	43.5	0.0	0.0	4.6	48.2
Central and South America	0.4	0.0	—	0.0	0.4
North America	50.8	0.2	1.2	16.8	69.2
Eastern Europe	6.8	—	—	0.0	6.8
Western Europe	95.1	—	0.4	4.3	99.9
Others	28.6	—	1.2	0.0	29.9
<b>Total</b>	<b>1,988.8</b>	<b>70.7</b>	<b>39.0</b>	<b>96.3</b>	<b>2,194.9</b>
<b>Exempt portion</b>	<b>n.a.</b>	<b>n.a.</b>	<b>n.a.</b>	<b>n.a.</b>	<b>5.8</b>

Notes:

1. Exempt portion represents the amount before the deduction of specific reserve for possible losses on loans, reserve for possible losses on loans to restructuring countries and partial direct write-offs, calculated using the standardized approach for business units and asset classes that are immaterial for the purpose of calculating credit risk-weighted assets.
2. Exposure to non-Japanese residents is included in “Overseas.”
3. “Others” include deposits, call loans, other debt purchased, money held in trust, foreign exchange assets, other assets, etc.

(Billions of yen)					
As of March 31, 2010					
	Loans, commitments and other non-OTC derivative off-balance-sheet exposures	Securities	OTC derivatives	Others	Total
<b>Domestic</b>	<b>1,726.5</b>	<b>32.8</b>	<b>38.1</b>	<b>84.3</b>	<b>1,881.8</b>
<b>Overseas</b>	<b>239.3</b>	<b>2.1</b>	<b>0.5</b>	<b>23.7</b>	<b>265.7</b>
Asia	42.6	0.0	0.1	4.5	47.3
Central and South America	27.6	1.5	0.0	0.3	29.5
North America	32.2	0.6	0.0	16.5	49.4
Eastern Europe	12.8	—	—	0.0	12.8
Western Europe	70.8	—	0.3	1.8	73.0
Others	52.9	—	0.0	0.3	53.3
<b>Total</b>	<b>1,965.9</b>	<b>34.9</b>	<b>38.7</b>	<b>108.0</b>	<b>2,147.5</b>
<b>Exempt portion</b>	<b>n.a.</b>	<b>n.a.</b>	<b>n.a.</b>	<b>n.a.</b>	<b>3.6</b>

Notes:

1. Exempt portion represents the amount before the deduction of specific reserve for possible losses on loans, reserve for possible losses on loans to restructuring countries and partial direct write-offs, calculated using the standardized approach for business units and asset classes that are immaterial for the purpose of calculating credit risk-weighted assets.
2. Exposure to non-Japanese residents is included in “Overseas.”
3. “Others” include deposits, call loans, other debt purchased, money held in trust, foreign exchange assets, other assets, etc.

**(E) Breakdown by industry**

	(Billions of yen)				
	As of March 31, 2009				
	Loans, commitments and other non-OTC derivative off-balance-sheet exposures	Securities	OTC derivatives	Others	Total
Manufacturing	388.9	6.6	6.1	18.5	420.2
Construction	129.1	11.3	0.7	2.7	144.0
Real estate	461.6	2.9	1.1	10.8	476.6
Service industries	294.4	9.9	3.8	7.1	315.4
Wholesale and retail	243.5	6.7	14.7	29.5	294.5
Finance and insurance	56.7	0.8	1.0	19.1	77.6
Individuals	136.6	—	0.0	1.4	138.1
Others	277.7	32.1	11.3	6.9	328.2
<b>Total</b>	<b>1,988.8</b>	<b>70.7</b>	<b>39.0</b>	<b>96.3</b>	<b>2,194.9</b>
<b>Exempt portion</b>	<b>n.a.</b>	<b>n.a.</b>	<b>n.a.</b>	<b>n.a.</b>	<b>5.8</b>

## Notes:

1. Exempt portion represents the amount before the deduction of specific reserve for possible losses on loans, reserve for possible losses on loans to restructuring countries and partial direct write-offs, calculated using the standardized approach for business units and asset classes that are immaterial for the purpose of calculating credit risk-weighted assets.
2. "Others" include deposits, call loans, other debt purchased, money held in trust, foreign exchange assets, other assets, etc.
3. Following the revision of the Japan Standardized Industrial Classification in November 2007, partial amendment has been made to the industry classification of the fiscal year ended March 31, 2010, and such amendment is also reflected in the figures as of March 31, 2009.

	(Billions of yen)				
	As of March 31, 2010				
	Loans, commitments and other non-OTC derivative off-balance-sheet exposures	Securities	OTC derivatives	Others	Total
Manufacturing	408.9	9.6	8.2	18.4	445.2
Construction	104.8	10.4	0.4	2.5	118.2
Real estate	349.4	0.9	0.4	6.7	357.6
Service industries	258.4	1.0	5.0	6.7	271.2
Wholesale and retail	266.5	6.4	19.1	37.7	329.8
Finance and insurance	64.5	1.8	0.4	19.0	85.9
Individuals	195.2	—	0.0	1.5	196.8
Others	317.7	4.6	4.9	15.0	342.3
<b>Total</b>	<b>1,965.9</b>	<b>34.9</b>	<b>38.7</b>	<b>108.0</b>	<b>2,147.5</b>
<b>Exempt portion</b>	<b>n.a.</b>	<b>n.a.</b>	<b>n.a.</b>	<b>n.a.</b>	<b>3.6</b>

## Notes:

1. Exempt portion represents the amount before the deduction of specific reserve for possible losses on loans, reserve for possible losses on loans to restructuring countries and partial direct write-offs, calculated using the standardized approach for business units and asset classes that are immaterial for the purpose of calculating credit risk-weighted assets.
2. "Others" include deposits, call loans, other debt purchased, money held in trust, foreign exchange assets, other assets, etc.
3. Following the revision of the Japan Standardized Industrial Classification in November 2007, partial amendment has been made to the industry classification.



• **Status of reserves for possible losses on loans**

The amounts associated with regarded-method exposure and securitization exposure are excluded.

**(F) Fiscal year-end balances of reserves for possible losses on loans and changes during the fiscal year (after partial direct write-offs)**

	(Billions of yen)	
	As of, or for the fiscal year ended, March 31, 2009	As of, or for the fiscal year ended, March 31, 2010
General reserve for possible losses on loans		
Beginning balance	510.9	583.2
Increase during the fiscal year	583.2	563.8
Decrease during the fiscal year	510.9	583.2
Ending balance	583.2	563.8
Specific reserve for possible losses on loans		
Beginning balance	171.9	299.5
Increase during the fiscal year	299.5	317.7
Decrease during the fiscal year	171.9	299.5
Ending balance	299.5	317.7
Reserve for possible losses on loans to restructuring countries		
Beginning balance	0.0	0.5
Increase during the fiscal year	0.5	0.1
Decrease during the fiscal year	0.0	0.5
Ending balance	0.5	0.1
<b>Total</b>		
<b>Beginning balance</b>	<b>683.0</b>	<b>883.4</b>
<b>Increase during the fiscal year</b>	<b>883.4</b>	<b>881.8</b>
<b>Decrease during the fiscal year</b>	<b>683.0</b>	<b>883.4</b>
<b>Ending balance</b>	<b>883.4</b>	<b>881.8</b>

Note:

General reserve for possible losses on loans in the above table represents the amount recorded in our consolidated balance sheet, and the amounts associated with regarded-method exposure and securitization exposure are not excluded.

**(G) Specific reserve for possible losses on loans by geographical area and industry**

	(Billions of yen)		
	As of March 31, 2008	As of March 31, 2009	Change
<b>Domestic</b>	<b>144.5</b>	<b>218.6</b>	<b>74.0</b>
Manufacturing	12.0	16.1	4.0
Construction	5.3	5.4	0.0
Real estate	11.9	51.8	39.8
Service industries	24.1	34.2	10.1
Wholesale and retail	24.8	35.0	10.1
Finance and insurance	4.3	2.8	(1.4)
Individuals	55.4	58.7	3.2
Others	6.2	14.3	8.0
<b>Overseas</b>	<b>23.4</b>	<b>74.5</b>	<b>51.0</b>
<b>Exempt portion</b>	<b>3.9</b>	<b>6.4</b>	<b>2.4</b>
<b>Total</b>	<b>171.9</b>	<b>299.5</b>	<b>127.5</b>

Notes:

1. Exempt portion represents the amount calculated using the standardized approach for business units and asset classes that are immaterial for purposes of calculating credit risk-weighted assets.
2. Partial amendment has been made to the industry classification of the fiscal year ended March 31, 2010, and such amendment is also reflected in the figures as of March 31, 2008 and 2009.

	(Billions of yen)		
	As of March 31, 2009	As of March 31, 2010	Change
<b>Domestic</b>	<b>218.6</b>	<b>274.8</b>	<b>56.2</b>
Manufacturing	16.1	24.7	8.6
Construction	5.4	6.4	0.9
Real estate	51.8	30.2	(21.6)
Service industries	34.2	22.5	(11.6)
Wholesale and retail	35.0	29.0	(6.0)
Finance and insurance	2.8	9.4	6.5
Individuals	58.7	71.1	12.4
Others	14.3	81.2	66.9
<b>Overseas</b>	<b>74.5</b>	<b>36.2</b>	<b>(38.2)</b>
<b>Exempt portion</b>	<b>6.4</b>	<b>6.7</b>	<b>0.2</b>
<b>Total</b>	<b>299.5</b>	<b>317.7</b>	<b>18.2</b>

Note:

1. Exempt portion represents the amount calculated using the standardized approach for business units and asset classes that are immaterial for purposes of calculating credit risk-weighted assets.
2. Following the revision of the Japan Standardized Industrial Classification in November 2007, partial amendment has been made to the industry classification of the fiscal year ended March 31, 2010. Such amendment is also reflected in the figures as of March 31, 2009.

## (H) Write-offs of loans by industry

	(Billions of yen)	
	For the fiscal year ended March 31, 2009	For the fiscal year ended March 31, 2010
Manufacturing	32.4	11.7
Construction	20.8	2.3
Real estate	86.3	16.8
Service industries	10.6	6.7
Wholesale and retail	47.6	34.0
Finance and insurance	13.0	1.1
Individuals	3.0	2.7
Others	48.0	53.3
<b>Exempt portion</b>	<b>0.6</b>	<b>0.3</b>
<b>Total</b>	<b>262.7</b>	<b>129.3</b>

Notes:

1. The above table represents the breakdown of losses on write-offs of loans recorded in our consolidated statement of income after excluding the amounts associated with regarded-method exposure and securitization exposure.
2. Exempt portion represents the amount calculated using the standardized approach for business units and asset classes that are immaterial for purposes of calculating credit risk-weighted assets.
3. "Others" include overseas and non-Japanese resident portions.
4. Following the revision of the Japan Standardized Industrial Classification in November 2007, partial amendment has been made to the industry classification of the fiscal year ended March 31, 2010. Such amendment is also reflected in the figures as of March 31, 2009.

### • Status of exposure to which the standardized approach is applied

#### (I) Exposure by risk weight category after applying credit risk mitigation

Risk weight	(Billions of yen)			
	As of March 31, 2009			With external rating
	On-balance sheet	Off-balance sheet	Total	
0%	701.9	2,699.7	3,401.7	102.2
10%	29.4	0.0	29.5	—
20%	439.0	1,827.7	2,266.8	27.9
35%	0.0	—	0.0	—
50%	48.6	13.2	61.8	10.5
100%	2,027.9	987.5	3,015.4	9.5
150%	0.1	0.0	0.2	0.0
350%	—	—	—	—
625%	—	—	—	—
937.5%	—	—	—	—
1,250%	—	0.0	0.0	—
<b>Total</b>	<b>3,247.2</b>	<b>5,528.4</b>	<b>8,775.6</b>	<b>150.4</b>

Notes:

1. The amounts in the above table are before the deduction of specific reserve for possible losses on loans, reserve for possible losses on loans to restructuring countries and partial direct write-offs.
2. Off-balance-sheet exposure shows credit equivalent amount.

Risk weight	(Billions of yen)			
	As of March 31, 2010			With external rating
	On-balance sheet	Off-balance sheet	Total	
0%	527.6	2,723.5	3,251.1	129.5
10%	1.0	—	1.0	—

20%	325.9	1,179.6	1,505.5	19.5
35%	0.0	—	0.0	—
50%	22.5	20.0	42.6	15.9
100%	2,006.8	980.6	2,987.4	58.0
150%	0.4	—	0.4	—
350%	—	—	—	—
625%	—	—	—	—
937.5%	—	—	—	—
1,250%	—	0.0	0.0	—
<b>Total</b>	<b><u>2,884.4</u></b>	<b><u>4,903.9</u></b>	<b><u>7,788.4</u></b>	<b><u>223.1</u></b>

Notes:

1. The amounts in the above table are before the deduction of specific reserve for possible losses on loans, reserve for possible losses on loans to restructuring countries and partial direct write-offs.
2. Off-balance-sheet exposure shows credit equivalent amount.

**(J) Deduction from capital**

	(Billions of yen)	
	As of March 31, 2009	As of March 31, 2010
Deduction from capital	35.8	36.2

- Status of exposure to which the internal ratings-based approach is applied

**(K) Specialized lending exposure under supervisory slotting criteria by risk weight category**

Risk weight	(Billions of yen)	
	As of March 31, 2009	As of March 31, 2010
50%	168.7	241.8
70%	860.3	672.3
90%	216.9	165.1
95%	121.8	47.7
115%	307.2	223.2
120%	4.5	23.7
140%	17.2	8.4
250%	363.6	470.8
Default	13.4	37.1
<b>Total</b>	<b>2,074.0</b>	<b>1,890.6</b>

**(L) Equity exposure under simple risk weight method by risk weight category**

Risk weight	(Billions of yen)	
	As of March 31, 2009	As of March 31, 2010
300%	273.3	224.8
400%	58.7	68.1
<b>Total</b>	<b>332.0</b>	<b>292.9</b>

Note: Of the equity exposure under the simple risk weight method, 300% risk weight is applied for listed equities and 400% for unlisted equities.

**(M) Portfolio by asset class and ratings segment (Corporate)**

(Billions of yen, except percentages)

As of March 31, 2009									
	PD (EAD weighted average) (%)	LGD (EAD weighted average) (%)	EL default (EAD weighted average) (%)	Risk weight (EAD weighted average) (%)	EAD (Billions of yen)	On-balance sheet	Off-balance sheet	Amount of undrawn commitments	Weighted average of credit conversion factor (%)
<b>Corporate</b>	4.78	36.19	n.a.	50.20	57,948.7	43,672.7	14,276.0	10,118.6	75.37
Investment grade zone	0.14	37.30	n.a.	26.40	31,784.8	21,538.5	10,246.2	8,123.3	75.39
Non-investment grade zone	3.64	33.26	n.a.	81.96	24,325.2	20,388.1	3,937.1	1,967.5	75.27
Default	100.00	55.69	52.55	41.58	1,838.6	1,745.9	92.6	27.7	76.76
<b>Sovereign</b>	0.01	39.15	n.a.	1.45	54,390.8	38,534.3	15,856.5	81.0	75.00
Investment grade zone	0.00	39.15	n.a.	1.22	54,251.4	38,398.7	15,852.6	80.6	75.00
Non-investment grade zone	1.59	39.13	n.a.	93.74	139.1	135.3	3.8	0.3	75.00
Default	100.00	45.32	41.17	54.90	0.2	0.2	0.0	—	—
<b>Bank</b>	0.71	38.16	n.a.	29.14	6,709.6	2,508.7	4,200.8	481.6	77.10
Investment grade zone	0.11	37.71	n.a.	23.91	6,180.4	2,254.0	3,926.3	419.1	77.41
Non-investment grade zone	2.21	40.12	n.a.	93.94	499.3	226.0	273.2	62.4	75.00
Default	100.00	98.61	96.46	28.50	29.8	28.6	1.2	—	—
<b>Equity exposure under PD/LGD approach</b>	3.20	90.00	n.a.	168.11	817.4	817.4	—	—	—
Investment grade zone	0.07	90.00	n.a.	119.15	570.2	570.2	—	—	—
Non-investment grade zone	2.38	90.00	n.a.	306.34	226.7	226.7	—	—	—
Default	100.00	90.00	90.00	—	20.3	20.3	—	—	—
<b>Total</b>	2.38	38.01	n.a.	27.71	119,866.5	85,533.2	34,333.3	10,681.2	75.45
Investment grade zone	0.06	38.73	n.a.	12.08	92,786.8	62,761.6	30,025.2	8,623.1	75.48
Non-investment grade zone	3.59	33.94	n.a.	84.28	25,190.5	20,976.3	4,214.2	2,030.3	75.27
Default	100.00	56.73	53.64	40.93	1,889.1	1,795.2	93.9	27.7	76.76

## Notes:

- Investment grade zone includes obligor ratings A1 to B2, non-investment grade zone includes C1 to E2 (excluding E2R), and default includes E2R to H1 (see page 21 for details of obligor ratings).
- “Corporate” does not include specialized lending exposure under supervisory slotting criteria.
- Each asset class includes purchased receivables.
- The commitments that can be terminated at any time without condition or terminated automatically are not included in the amount of undrawn commitments and weighted average of credit conversion factor.

(Billions of yen, except percentages)

As of March 31, 2010

	PD (EAD weighted average) (%)	LGD (EAD weighted average) (%)	EL default (EAD weighted average) (%)	Risk weight (EAD weighted average) (%)	EAD (Billions of yen)	On-balance sheet	Off-balance sheet	Amount of undrawn commitments	Weighted average of credit conversion factor (%)
<b>Corporate</b>	5.06	35.70	n.a.	51.20	52,412.4	38,803.8	13,608.6	9,912.0	75.19
Investment grade zone	0.12	36.84	n.a.	25.08	28,687.3	18,963.8	9,723.5	7,780.0	75.18
Non-investment grade zone	4.00	32.51	n.a.	86.15	21,988.4	18,196.7	3,791.7	2,090.6	75.19
Default	100.00	57.35	54.32	40.20	1,736.6	1,643.2	93.3	41.3	75.81
<b>Sovereign</b>	0.01	38.78	n.a.	1.31	61,598.8	47,419.8	14,179.0	101.7	75.00
Investment grade zone	0.00	38.78	n.a.	1.16	61,496.7	47,324.1	14,172.6	95.3	75.00
Non-investment grade zone	1.59	38.77	n.a.	91.71	102.0	95.6	6.4	6.3	75.00
Default	100.00	69.07	64.41	61.76	0.0	0.0	—	—	—
<b>Bank</b>	1.02	37.70	n.a.	28.84	4,967.6	2,121.1	2,846.5	298.2	77.54
Investment grade zone	0.12	37.07	n.a.	23.85	4,518.7	1,933.4	2,585.2	229.9	78.87
Non-investment grade zone	2.35	39.67	n.a.	83.10	413.4	154.3	259.1	68.3	73.09
Default	100.00	95.65	93.27	31.59	35.4	33.2	2.1	—	—
<b>Equity exposure under PD/LGD approach</b>	1.65	90.00	n.a.	169.82	1,022.2	1,022.2	—	—	—
Investment grade zone	0.08	90.00	n.a.	113.81	788.1	788.1	—	—	—
Non-investment grade zone	5.17	90.00	n.a.	365.13	229.7	229.7	—	—	—
Default	100.00	90.00	90.00	—	4.3	4.3	—	—	—
<b>Total</b>	2.27	37.83	n.a.	25.68	120,001.3	89,367.0	30,634.3	10,312.0	75.25
Investment grade zone	0.05	38.54	n.a.	10.35	95,491.0	69,009.6	26,481.4	8,105.3	75.28
Non-investment grade zone	3.97	33.25	n.a.	88.94	22,733.8	18,676.5	4,057.3	2,165.3	75.12
Default	100.00	58.19	55.18	39.93	1,776.4	1,680.9	95.5	41.3	75.81

Notes:

- Investment grade zone includes obligor ratings A1 to B2, non-investment grade zone includes C1 to E2 (excluding E2R), and default includes E2R to H1 (see page 21 for details of obligor ratings).
- “Corporate” does not include specialized lending exposure under supervisory slotting criteria.
- Each asset class includes purchased receivables.
- The commitments that can be terminated at any time without condition or terminated automatically are not included in the amount of undrawn commitments and weighted average of credit conversion factor.

**(N) Portfolio by asset class and ratings segment (Retail)**

(Billions of yen, except percentages)

As of March 31, 2009									
	PD (EAD weighted average) (%)	LGD (EAD weighted average) (%)	EL default (EAD weighted average) (%)	Risk weight (EAD weighted average) (%)	EAD (Billions of yen)	On-balance sheet	Off-balance sheet	Amount of undrawn commitments	Weighted average of credit conversion factor (%)
<b>Residential mortgage</b>	1.99	41.76	n.a.	31.99	10,555.5	10,114.0	441.5	11.2	75.00
Non-default	0.84	41.65	n.a.	31.98	10,433.3	9,997.5	435.7	11.2	75.00
Default	100.00	51.09	48.57	33.17	122.2	116.4	5.7	—	—
<b>Qualifying revolving loans (retail)</b>	3.63	85.54	n.a.	72.67	336.7	234.4	102.2	1,418.2	7.19
Non-default	3.16	85.55	n.a.	72.79	335.1	233.1	102.0	1,415.7	7.19
Default	100.00	84.26	80.40	48.31	1.6	1.3	0.2	2.5	11.39
<b>Other retail</b>	4.20	57.27	n.a.	58.31	2,252.2	2,225.8	26.3	33.4	68.08
Non-default	1.86	57.36	n.a.	58.89	2,198.6	2,176.0	22.6	29.3	64.89
Default	100.00	53.55	50.89	34.60	53.5	49.7	3.7	4.1	90.88
<b>Total</b>	2.41	45.54	n.a.	37.54	13,144.5	12,574.3	570.2	1,462.8	9.11
Non-default	1.07	45.45	n.a.	37.59	12,967.1	12,406.7	560.4	1,456.2	8.87
Default	100.00	52.14	49.57	33.74	177.3	167.5	9.8	6.6	60.60

Notes:

- Each asset class includes purchased receivables.
- The commitments that can be terminated at any time without condition or terminated automatically are not included in the amount of undrawn commitments and weighted average of credit conversion factor.

(Billions of yen, except percentages)

As of March 31, 2010									
	PD (EAD weighted average) (%)	LGD (EAD weighted average) (%)	EL default (EAD weighted average) (%)	Risk weight (EAD weighted average) (%)	EAD (Billions of yen)	On-balance sheet	Off-balance sheet	Amount of undrawn commitments	Weighted average of credit conversion factor (%)
<b>Residential mortgage</b>	2.54	41.91	n.a.	32.90	10,664.9	10,279.4	385.5	11.4	75.00
Non-default	0.84	41.78	n.a.	32.89	10,482.1	10,104.3	377.8	11.4	75.00
Default	100.00	49.54	46.99	33.58	182.7	175.0	7.7	—	—
<b>Qualifying revolving loans (retail)</b>	3.64	83.85	n.a.	71.80	337.2	233.9	103.2	1,422.6	7.26
Non-default	3.21	83.85	n.a.	71.90	335.7	232.7	103.0	1,420.3	7.25
Default	100.00	83.36	79.53	50.34	1.5	1.2	0.2	2.3	11.44
<b>Other retail</b>	4.49	56.03	n.a.	55.10	2,146.7	2,124.7	21.9	25.9	70.27
Non-default	1.78	56.08	n.a.	55.68	2,087.4	2,068.4	18.9	22.9	67.12
Default	100.00	54.27	51.65	34.70	59.2	56.3	2.9	3.0	93.79
<b>Total</b>	2.88	45.29	n.a.	37.52	13,148.9	12,638.1	510.7	1,460.1	8.91
Non-default	1.05	45.19	n.a.	37.59	12,905.3	12,405.5	499.8	1,454.7	8.73
Default	100.00	50.90	48.33	33.96	243.5	232.6	10.9	5.4	58.13

Notes:

- Each asset class includes purchased receivables.
- The commitments that can be terminated at any time without condition or terminated automatically are not included in the amount of undrawn commitments and weighted average of credit conversion factor.



**(O) Actual losses by asset class**

	(Billions of yen)	
	For the period from April 1, 2008 through March 31, 2009	For the period from April 1, 2009 through March 31, 2010
	Actual losses	Actual losses
Corporate	345.3	166.5
Sovereign	0.0	0.3
Bank	28.6	1.0
Residential mortgage	17.2	33.2
Qualifying revolving loans (retail)	2.1	0.2
Other retail	3.8	4.3
<b>Total</b>	<b>397.3</b>	<b>205.8</b>

Notes:

1. We have changed the method of calculation of actual losses for the above table starting the period from April 1, 2009 through March 31, 2010. We also reflected such changes to the period from April 1, 2008 through March 31, 2009 in the above table.
2. Actual losses are the sum of the net increase (decrease) in the amount of partial direct write-offs, specific reserve for possible losses on loans and general reserve for possible losses on loans (for claims against special attention obligors or below), etc., as well as tax-qualified direct write-offs, losses from sales of non-performing loans, losses from debt forgiveness and losses from debt-equity swaps during the relevant period. Equity exposure under the PD/LGD approach is not included in the amount of actual losses.

<Analysis>

Actual losses of ¥205.8 billion in the period from April 1, 2009 through March 31, 2010 decreased by ¥191.4 billion compared with the period from April 1, 2008 through March 31, 2009. The decrease was due mainly to the decrease in losses from corporate exposure reflecting improvements in the economic environment, etc.

**(P) Comparison of estimated and actual losses by asset class**

	(Billions of yen)					
	For the period from April 1, 2007 through March 31, 2008			For the period from April 1, 2008 through March 31, 2009		
	Estimated losses (expected losses as of March 31, 2007)			Estimated losses (expected losses as of March 31, 2008)		
		After deduction of reserves	Actual losses		After deduction of reserves	Actual losses
Corporate	1,086.0	217.0	74.6	1,121.0	350.0	345.3
Sovereign	5.4	(7.0)	0.0	1.3	(11.1)	0.0
Bank	6.4	2.6	(2.6)	2.9	2.5	28.6
Residential mortgage	78.2	6.8	5.1	86.6	22.7	17.2
Qualifying revolving loans (retail)	7.2	2.3	(0.1)	7.9	3.2	2.1
Other retail	52.9	8.8	(2.8)	51.9	16.4	3.8
<b>Total</b>	<b>1,236.5</b>	<b>230.5</b>	<b>74.1</b>	<b>1,271.8</b>	<b>383.9</b>	<b>397.3</b>

	(Billions of yen)		
	For the period from April 1, 2009 through March 31, 2010		
	Estimated losses (expected losses as of March 31, 2009)		
		After deduction of reserves	Actual losses
Corporate	1,313.1	473.3	166.5
Sovereign	1.7	(10.8)	0.3
Bank	35.5	6.5	1.0
Residential mortgage	95.8	24.8	33.2
Qualifying revolving loans (retail)	10.3	3.8	0.2
Other retail	51.3	15.6	4.3
<b>Total</b>	<b>1,508.0</b>	<b>513.3</b>	<b>205.8</b>

---

Notes:

1. We have changed the method of disclosure and calculation of actual losses for the above table starting the period from April 1, 2009 through March 31, 2010. We also reflected such changes to the period from April 1, 2008 through March 31, 2009 and the period from April 1, 2007 through March 31, 2008 in the above table.
2. Estimated losses after deduction of reserve are the amount after deductions of partial direct write-offs, specific reserves for possible losses on loans and general reserves for possible losses on loans (for claims against special attention obligors or below), etc., as of the beginning of each period.
3. Actual losses are the sum of the net increase (decrease) in the amount of partial direct write-offs, specific reserves for possible losses on loans and general reserves for possible losses on loans (for claims against special attention obligors or below), etc., as well as tax-qualified direct write-offs, losses from sales of non-performing loans, losses from debt forgiveness and losses from debt-equity swaps during the relevant period. Equity exposure under the PD/LGD approach is not included in the amount of actual losses.

## ■ Methods for credit risk mitigation

### (8) Risk management regarding credit risk mitigation

We obtain collateral and guarantees as a means of securing credit. In obtaining the collateral and guarantees, we evaluate the value of the collateral, guarantee performance capability of guarantor and legal enforceability, and we also conduct periodical subsequent re-evaluations. Furthermore, we monitor the state of concentration of collateral type and concentration of credit risks in individual companies, including indirect credit exposure such as guarantees.

When calculating the credit risk weighted assets for capital adequacy ratio regulations, the effect of credit risk mitigation through financial collateral (mainly deposits and securities), other collateral (mainly real estate) and guarantees by “sovereign, banks or corporations above a certain credit rating” is reflected.

For derivatives transactions and repurchase transactions, in cases in which a bilateral netting contract is valid in light of the legal system of the relevant jurisdiction, we take its effect into consideration.

### (9) Credit risk mitigation by portfolio classification

The amounts of exposure to which the method of credit risk mitigation through collateral and guarantees is applied are as follows:

	(Billions of yen)				
	As of March 31, 2009				
	Financial collateral	Other collateral	Guarantees	Credit derivatives	Total
<b>Internal ratings-based approach</b>	<b>2,480.5</b>	<b>4,869.5</b>	<b>5,248.3</b>	<b>405.1</b>	<b>13,003.7</b>
Corporate	2,065.8	4,800.5	2,783.0	405.1	10,054.6
Sovereign	0.3	16.4	1,433.2	—	1,450.0
Bank	400.3	0.8	219.8	—	621.0
Retail	13.9	51.7	812.2	—	878.0
Residential mortgage	—	—	300.0	—	300.0
Qualifying revolving loans	—	—	0.9	—	0.9
Other retail	13.9	51.7	511.3	—	577.0
Others	—	—	—	—	—
<b>Standardized approach</b>	<b>2,218.2</b>	<b>n.a.</b>	<b>54.5</b>	<b>—</b>	<b>2,272.8</b>
Sovereign	2,107.9	n.a.	28.8	—	2,136.7
Bank	1.9	n.a.	0.0	—	1.9
Corporate	108.3	n.a.	25.7	—	134.1
Residential mortgage	—	n.a.	—	—	—
Securitized	0.0	n.a.	—	—	0.0
Others	—	n.a.	—	—	—
<b>Total</b>	<b>4,698.8</b>	<b>4,869.5</b>	<b>5,302.9</b>	<b>405.1</b>	<b>15,276.5</b>

	(Billions of yen)				
	As of March 31, 2010				
	Financial collateral	Other collateral	Guarantees	Credit derivatives	Total
<b>Internal ratings-based approach</b>	<b>2,476.1</b>	<b>4,822.8</b>	<b>5,411.5</b>	<b>87.6</b>	<b>12,798.2</b>
Corporate	2,095.5	4,762.2	3,497.8	87.6	10,443.3
Sovereign	0.4	13.5	889.4	—	903.3
Bank	367.1	4.9	218.8	—	590.9
Retail	13.1	42.1	805.3	—	860.6
Residential mortgage	—	—	269.9	—	269.9
Qualifying revolving loans	—	—	0.7	—	0.7
Other retail	13.1	42.1	534.6	—	589.9
Others	—	—	—	—	—
<b>Standardized approach</b>	<b>2,373.2</b>	<b>n.a.</b>	<b>—</b>	<b>—</b>	<b>2,373.2</b>
Sovereign	2,256.4	n.a.	—	—	2,256.4
Bank	1.5	n.a.	—	—	1.5
Corporate	115.2	n.a.	—	—	115.2
Residential mortgage	—	n.a.	—	—	—
Securitized	—	n.a.	—	—	—
Others	—	n.a.	—	—	—
<b>Total</b>	<b>4,849.4</b>	<b>4,822.8</b>	<b>5,411.5</b>	<b>87.6</b>	<b>15,171.5</b>



■ Counterparty risk in derivatives transactions and long-settlement transactions

(10) Management of counterparty risk in derivatives transactions and long-settlement transactions

Derivatives transactions, etc., are also subject to the same risk management methods as our other credit transactions.

(11) Status of counterparty risk in derivatives transactions and long-settlement transactions

(A) Status of derivatives transactions and long-settlement transactions

Derivative transactions

	(Billions of yen)					
	As of March 31, 2009			As of March 31, 2010		
	Gross replacement cost	Gross add-on	Credit equivalent amount	Gross replacement cost	Gross add-on	Credit equivalent amount
<b>Current exposure method</b>						
Foreign exchange-related transactions	3,019.6	2,201.2	5,220.9	2,411.5	1,907.0	4,318.5
Interest rate-related transactions	15,127.0	4,275.4	19,402.5	7,093.9	2,233.9	9,327.9
Gold-related transactions	0.1	0.0	0.1	0.0	0.0	0.0
Equity-related transactions	148.6	45.9	194.5	72.3	75.7	148.0
Transactions related to precious metals (other than gold)	0.4	0.2	0.7	0.0	0.0	0.1
Other commodity-related transactions	203.2	130.7	334.0	117.8	95.3	213.2
Credit derivatives transactions	499.0	1,101.0	1,600.1	120.7	643.3	764.1
<b>Subtotal (A)</b>	<b>18,998.2</b>	<b>7,754.8</b>	<b>26,753.0</b>	<b>9,816.4</b>	<b>4,955.5</b>	<b>14,772.0</b>
Effect of credit equivalent amounts mitigation by close-out netting settlement contracts (B)	n.a.	n.a.	18,408.6	n.a.	n.a.	9,552.2
<b>Subtotal (C)=(A)+(B)</b>	n.a.	n.a.	<b>8,344.3</b>	n.a.	n.a.	<b>5,219.8</b>
Effect of credit risk mitigation by collateral (D)	n.a.	n.a.	1,030.6	n.a.	n.a.	565.8
<b>Total (C)+(D)</b>	<b>n.a.</b>	<b>n.a.</b>	<b>7,313.7</b>	<b>n.a.</b>	<b>n.a.</b>	<b>4,654.0</b>
<b>Standardized method</b>						
<b>Total</b>			n.a.			288.3

Note: As for the method of calculating credit equivalent amounts, the current exposure method is used in the fiscal year ended March 31, 2009 and the current exposure method and standardized method are used in the fiscal year ended March 31, 2010.

Long-settlement transactions

	(Billions of yen)					
	As of March 31, 2009			As of March 31, 2010		
	Gross replacement cost	Gross add-on	Credit equivalent amount	Gross replacement cost	Gross add-on	Credit equivalent amount
<b>Long-settlement transactions</b>	<b>11.7</b>	<b>0.5</b>	<b>12.2</b>	<b>13.6</b>	<b>2.2</b>	<b>15.8</b>

Notes:

1. The current exposure method is used as the method to calculate credit equivalent amounts.
2. Neither the “effect of credit equivalent amounts mitigation by close-out netting settlement contracts” nor the “effect of credit risk mitigation by collateral” applies to long-settlement transactions.

**(B) Amounts of credit risk mitigation by type**

	(Billions of yen)	
	<u>As of March 31, 2009</u>	<u>As of March 31, 2010</u>
Financial collateral	42.2	62.0
Other collateral	75.8	62.5
Guarantees, others	20.2	13.1
<b>Total</b>	<b><u>138.2</u></b>	<b><u>137.8</u></b>

**(C) Notional amount of credit derivatives subject to credit equivalent amount calculations**

		(Billions of yen)	
		<u>As of March 31, 2009</u>	<u>As of March 31, 2010</u>
		<u>Notional amount</u>	<u>Notional amount</u>
<b>Credit derivatives type:</b>			
Credit default swap	Bought	7,779.4	4,842.0
	Sold	<u>6,962.8</u>	<u>4,605.5</u>
Total return swap	Bought	—	—
	Sold	—	—
<b>Total</b>	<b>Bought</b>	<b>7,779.4</b>	<b>4,842.0</b>
	<b>Sold</b>	<b><u>6,962.8</u></b>	<b><u>4,605.5</u></b>

Note: Credit derivatives used for credit risk mitigation are as follows:

	(Billions of yen)	
	<u>As of March 31, 2009</u>	<u>As of March 31, 2010</u>
Credit derivatives used for credit risk mitigation	489.6	162.1

## ■ Securitization exposure

We classify transactions as securitization exposure based on two characteristics, “non-recourse” and “senior/subordinated structure,” pursuant to the definitions set forth in the Consolidated Capital Adequacy Ratio Notice, etc.; provided that the transactions do not include those which fall within specialized lending exposure.

Disclosed figures on securitization exposure in this section are based on transactions that are subject to the calculation of the amount of credit risk-weighted assets and do not include assets held in our (including our securities company subsidiaries) trading account.

### (12) Summary of securitization exposure and its risk management

We are associated with securitization transactions from various perspectives and positions. With respect to quantitative information related to (a) to (c) below, see “Quantitative disclosure items for securitization exposure” described beginning from the next page that follows the definition set forth in the Consolidated Capital Adequacy Ratio Notice, etc.

#### (a) Securitization of Our Assets (“Securitization as Originator”)

For the purposes of mitigating credit concentration risk and controlling economic capital, etc., we engage in securitization transactions (such as synthetic CDOs) of which underlying assets include mortgage loans, exposure to our corporate customers and securitization exposure. When conducting a securitization as originator, we consider various sides of such transaction, including the effects of reduction of economic capital and improvement of return on risk as well as the practical effects of risk transfers, and make a comprehensive judgment on structure and appropriateness of transaction.

#### (b) Securitization Program (ABCP/ABL) Sponsor

As a means of supporting our customers in their securitization of account receivables and trade notes, etc. held by our customers, we retain securitization exposure by providing the asset-backed loan, or ABL, or providing an asset-backed commercial paper, or ABCP, backup line, as sponsor. In such cases, in addition to gaining firm understanding of the actual risk profile through due diligence from the viewpoint of investors, we apply internal ratings and make evaluations by assessing such transactions and carefully managing the exposure together with other direct loan assets.

#### (c) Investment in Alternative Credit Risk Assets (“Securitization Transactions as Investor”)

We hold securitization instruments, such as ABS, CMBS, RMBS, and CDO, for the purpose of investing in alternative credit risk assets that are different from conventional credit risk assets in order to diversify our investment portfolio. The Portfolio Management Committee, etc., establish investment limits for securitization transactions as investor, and we maintain a stringent structure for management of such transactions. In addition, we implement stress tests based on scenarios under the market liquidity depletion and sharp price declines.

In addition, we undertake various securitization program arrangements such as ABL, ABCP and trust schemes, etc., as a means of financing for our customers. We endeavor to understand the actual risk profile, including the underlying assets, and to disclose appropriately the risks and terms of the program to the investing customer.

Furthermore, we actively act as servicer for securitization transactions, offer settlement account facilities (servicer cash advance) and provide interest rate swaps to securitization conduits.

We conduct credit risk measurements on all credit transactions, including securitization transactions, and carry out periodic monitoring on investment balance and performance on securitization transactions, etc., and report results to our Portfolio Management Committee, etc.

## ● Status of Response to Basel II

In calculating credit risk-weighted assets of securitization exposure under the internal ratings-based approach, we apply the ratings-based approach (“RBA”) if the asset has a rating obtained from eligible external credit assessment institutions and apply the supervisory formula approach (“SF”) in other cases pursuant to Consolidated Capital Adequacy Ratio Notice. We deduct securitization exposure from our capital when neither RBA nor SF can be applied.

In addition, in calculating credit risk-weighted assets of securitization exposure under the standardized approach, we calculate based on risk weight according to ratings by eligible external credit assessment institutions and weighted average risk weight of underlying assets.

As for the eligible external credit assessment institutions, we refer to Rating and Investment Information, Inc. (R&I), Japan Credit Rating Agency, Ltd. (JCR), Moody’s Investors Service (Moody’s), Standard & Poor’s (S&P) and Fitch Ratings, Ltd. in determining securitization exposure risk weight (We do not separately designate eligible external credit assessment institutions for each type of

securitization exposure).

### **(13) Accounting policies for securitization transactions**

The point at which financial assets and liabilities relating to securitization transactions begin or cease to be recognized, their evaluation and accounting treatment are pursuant to “Accounting Standards Relating to Financial Products” (Business Accounting Standards No. 10), etc., and we conduct valuations based on market price or other reasonably calculated price (such as a price quoted by a broker or an information vender) unless the valuation based on such information is recognized as extremely difficult to conduct in practice. With respect to the credit investments in securitization products made as an alternative to loans by the European, North American and other offices of domestic consolidated banking subsidiaries, given the current situation in which the volume of actual transactions is extremely limited and there exists a considerable gap between the offers and bids of sellers and buyers, we determined that valuations obtained from brokers and information vendors cannot be deemed to be the fair value, and we applied reasonably calculated prices based on the reasonable estimates of our management as fair value. In deriving reasonably calculated prices based on the reasonable estimates of our management, we used the discounted cash flow method, and the price decision variables include default rates, recovery rates, pre-payment rates and discount rates.

Furthermore, we apply appropriate accounting treatment on compound financial products based on “Report on Auditing Securitized Instruments”, announced by the Japanese Institute of Certified Public Accountants on March 26, 2008.



(14) Quantitative disclosure items for securitization exposure

• Securitization exposure as originator

(A) Information by type of underlying assets

(Billions of yen)

	As of, or for the fiscal year ended, March 31, 2009							Total
	Credit cards	Residential mortgage loans	Auto loans	Lease payment receivables	Corporate	Real estate	Securitization products	
<b>Conventional securitizations</b>								
Amount of underlying assets (a)	—	271.9	—	—	14.8	5.4	—	292.3
<i>Default exposure</i>	—	2.6	—	—	1.3	—	—	4.0
Losses during the fiscal year	—	0.5	—	—	0.1	—	—	0.6
Amount of exposures securitized during the fiscal year	—	—	—	—	—	—	—	—
Gains and losses recognized on sales during the fiscal year	—	—	—	—	—	—	—	—
Securitization subject to early amortization treatment	—	—	—	—	—	—	—	—
<b>Synthetic securitizations</b>								
Amount of underlying assets (b)	—	—	—	—	832.6	20.2	—	852.9
<i>Default exposure</i>	—	—	—	—	—	—	—	—
Losses during the fiscal year	—	—	—	—	—	—	—	—
Amount of exposures securitized during the fiscal year	—	—	—	—	580.6	20.2	—	600.9
Total amount of underlying assets (a)+(b)	—	271.9	—	—	847.5	25.7	—	1,145.2

Notes:

1. Items that refer to “during the fiscal year” show amounts accumulated during the fiscal year ended March 31 2009.
2. “Amount of underlying assets” and “Losses during the fiscal year” include those related to, in addition to exposure originated by us, exposure to assets originated by other financial institutions if they are contained in the same securitization program.
3. “Default exposure” and “Losses during the fiscal year” with respect to synthetic securitization transactions are based on the definition of default as set forth in the respective transactions.
4. Classification based on type of underlying assets is conducted according to the principal underlying asset type for each transaction.
5. “Credit cards” include shopping credit receivables, card loans, etc.
6. The risk mitigating effects, in the context of calculating capital adequacy ratio, of transfers (hedges) of risk through synthetic securitization transactions are reflected in “Required capital” of “(B) Information of securitization exposure retained or purchased.”
7. Of the securitization exposure retained or purchased whose risk has been transferred (hedged) through securitization schemes, we have categorized as securitization exposure as investor if the risk transfer (hedge) effects are not reflected in the calculation of capital adequacy ratio, following the definition for classification of securitization exposure set forth in the Consolidated Capital Adequacy Ratio Notice, etc. In making such categorization, classification based on type of underlying assets is conducted according to the principal underlying asset type for each transaction, and transactions that are difficult to classify are included under “Others.”

(Billions of yen)

	As of, or for the fiscal year ended, March 31, 2010							
	Credit cards	Residential mortgage loans	Auto loans	Lease payment receivables	Corporate	Real estate	Securitization products	Total
<b>Conventional securitizations</b>								
Amount of underlying assets (a)	—	233.6	—	—	1.1	0.5	—	235.3
<i>Default exposure</i>	—	4.1	—	—	1.0	—	—	5.1
Losses during the fiscal year	—	0.5	—	—	—	—	—	0.5
Amount of exposures securitized during the fiscal year	—	—	—	—	—	—	—	—
Gains and losses recognized on sales during the fiscal year	—	—	—	—	—	—	—	—
Securitization subject to early amortization treatment	—	—	—	—	—	—	—	—
<b>Synthetic securitizations</b>								
Amount of underlying assets (b)	—	—	—	—	911.4	33.9	—	945.4
<i>Default exposure</i>	—	—	—	—	—	—	—	—
Losses during the fiscal year	—	—	—	—	—	—	—	—
Amount of exposures securitized during the fiscal year	—	—	—	—	333.7	13.9	—	347.7
Total amount of underlying assets (a)+(b)	—	233.6	—	—	912.5	34.5	—	1,180.7

## Notes:

- Items that refer to “during the fiscal year” show amounts accumulated during the fiscal year ended March 31 2010.
- “Amount of underlying assets” and “Losses during the fiscal year” include those related to, in addition to exposure originated by us, exposure to assets originated by other financial institutions if they are contained in the same securitization program.
- “Default exposure” and “Losses during the fiscal year” with respect to synthetic securitization transactions are based on the definition of default as set forth in the respective transactions.
- Classification based on type of underlying assets is conducted according to the principal underlying asset type for each transaction.
- “Credit cards” include shopping credit receivables, card loans, etc.
- The risk mitigating effects, in the context of calculating capital adequacy ratio, of transfers (hedges) of risk through synthetic securitization transactions are reflected in “Required capital” of “(B) Information of securitization exposure retained or purchased.”
- Of the securitization exposure retained or purchased whose risk has been transferred (hedged) through securitization schemes, we have categorized as securitization exposure as investor if the risk transfer (hedge) effects are not reflected in the calculation of capital adequacy ratio, following the definition for classification of securitization exposure set forth in the Consolidated Capital Adequacy Ratio Notice, etc. In making such categorization, classification based on type of underlying assets is conducted according to the principal underlying asset type for each transaction, and transactions that are difficult to classify are included under “Others.”

**(B) Information of securitization exposure retained or purchased****–Exposure by risk weight category and underlying asset type and amount of required capital–**

(Billions of yen)

Risk weight	As of March 31, 2009							Total	Required capital
	Credit cards	Residential mortgage loans	Auto loans	Lease payment receivables	Corporate	Real estate	Securitization products		
Up to 20%	—	—	—	—	785.1	—	—	785.1	6.1
Up to 50%	—	—	—	—	9.6	14.1	—	23.8	0.7
Up to 100%	—	—	—	—	—	1.5	—	1.5	0.0
Up to 250%	—	41.2	—	—	—	—	—	41.2	3.4
Up to 650%	—	—	—	—	17.8	—	—	17.8	0.0
Over 650%	—	—	—	—	17.5	3.0	—	20.5	2.0
<b>Deduction from capital</b>	<b>—</b>	<b>0.0</b>	<b>—</b>	<b>—</b>	<b>5.3</b>	<b>3.0</b>	<b>—</b>	<b>8.3</b>	<b>3.4</b>
<b>Total</b>	<b>—</b>	<b>41.3</b>	<b>—</b>	<b>—</b>	<b>835.5</b>	<b>21.8</b>	<b>—</b>	<b>898.6</b>	<b>16.1</b>

(Billions of yen)

Risk weight	As of March 31, 2010							Total	Required capital
	Credit cards	Residential mortgage loans	Auto loans	Lease payment receivables	Corporate	Real estate	Securitization products		
Up to 20%	—	—	—	—	863.4	—	—	863.4	5.3
Up to 50%	—	—	—	—	—	25.3	—	25.3	0.7
Up to 100%	—	—	—	—	—	3.0	—	3.0	0.1
Up to 250%	—	39.1	—	—	—	1.5	—	40.6	3.6
Up to 650%	—	—	—	—	15.3	—	—	15.3	0.1
Over 650%	—	—	—	—	32.7	—	—	32.7	1.1
<b>Deduction from capital</b>	<b>—</b>	<b>—</b>	<b>—</b>	<b>—</b>	<b>1.8</b>	<b>5.5</b>	<b>—</b>	<b>7.3</b>	<b>0.6</b>
<b>Total</b>	<b>—</b>	<b>39.1</b>	<b>—</b>	<b>—</b>	<b>913.2</b>	<b>35.5</b>	<b>—</b>	<b>987.8</b>	<b>11.9</b>

**–Capital increase due to securitization transactions–**

(Billions of yen)

Capital increase due to securitization transactions	As of March 31, 2009							Total
	Credit cards	Residential mortgage loans	Auto loans	Lease payment receivables	Corporate	Real estate	Securitization products	
	—	7.8	—	—	—	—	—	7.8

(Billions of yen)

Capital increase due to securitization transactions	As of March 31, 2010							Total
	Credit cards	Residential mortgage loans	Auto loans	Lease payment receivables	Corporate	Real estate	Securitization products	
	—	5.2	—	—	—	—	—	5.2

**–Credit risk-weighted assets calculated pursuant to Article 15 of Supplementary Provisions of the FSA Capital Adequacy Ratio Notice–**

(Billions of yen)

Credit risk-weighted assets calculated pursuant to Article 15 of Supplementary Provisions of the FSA Capital Adequacy Ratio Notice	As of March 31, 2009	As of March 31, 2010
		—

• Securitization exposure as sponsor of securitization programs (ABCP/ABL)

(C) Information by type of underlying assets

	(Billions of yen)							
	As of, or for the fiscal year ended, March 31, 2009							
	Credit cards	Residential mortgage loans	Auto loans	Lease payment receivables	Account and note receivables	Real estate	Others	Total
<b>Amount of underlying assets</b>	171.0	—	135.2	401.5	650.6	—	86.4	1,444.9
Default exposure	—	—	—	0.5	2.5	—	0.0	3.1
<b>Estimated loss amount related to underlying assets</b>	4.2	—	2.9	2.8	10.8	—	3.1	24.0
<b>Amount of exposures securitized during the fiscal year</b>	1,083.4	—	1,018.4	2,696.8	3,769.2	—	638.9	9,207.0

Notes:

- Items that refer to “during the fiscal year” show amounts accumulated during the fiscal year ended March 31 2009.
- Securitization exposure that is acquired in securitization of customer’s claims other than as sponsor (in the form of asset-backed securities, trust beneficiary rights and other transferable instruments) is categorized as securitization exposure as investor.
- The amount of default exposure is the amount of the underlying assets recognized as default in the calculation of capital adequacy ratio.
- Estimated loss amount related to underlying assets is based on the amount of the underlying assets as of the relevant date and the following parameters that are used in the calculation of capital adequacy ratio:
  - parameters used in the calculation of required capital for an underlying asset when applying the supervisory formula (e.g., PD); and
  - with respect to underlying assets classified as securitization exposure, the conservative application of risk weights used in the ratings-based approach.
- Classification based on type of underlying assets is conducted according to the principal underlying asset type for each transaction. Transactions that are difficult to classify are included under “Others.”
- “Credit cards” include shopping credit receivables, card loans, etc.

	(Billions of yen)							
	As of, or for the fiscal year ended, March 31, 2010							
	Credit cards	Residential mortgage loans	Auto loans	Lease payment receivables	Account and note receivables	Real estate	Others	Total
<b>Amount of underlying assets</b>	137.0	—	122.4	284.2	454.3	—	37.6	1,035.7
Default exposure	—	—	—	0.4	9.8	—	0.0	10.3
<b>Estimated loss amount related to underlying assets</b>	0.8	—	2.8	1.8	11.3	—	0.2	17.1
<b>Amount of exposures securitized during the fiscal year</b>	1,566.4	—	998.9	3,818.3	2,500.3	—	399.8	9,283.9

Notes:

- Items that refer to “during the fiscal year” show amounts accumulated during the fiscal year ended March 31 2010.
- Securitization exposure that is acquired in securitization of customer’s claims other than as sponsor (in the form of asset-backed securities, trust beneficiary rights and other transferable instruments) is categorized as securitization exposure as investor.
- The amount of default exposure is the amount of the underlying assets recognized as default in the calculation of capital adequacy ratio.
- Estimated loss amount related to underlying assets is based on the amount of the underlying assets as of the relevant date and the following parameters that are used in the calculation of capital adequacy ratio:
  - parameters used in the calculation of required capital for an underlying asset when applying the supervisory formula (e.g., PD); and
  - with respect to underlying assets classified as securitization exposure, the conservative application of risk weights used in

the ratings-based approach.

- 5 Classification based on type of underlying assets is conducted according to the principal underlying asset type for each transaction. Transactions that are difficult to classify are included under "Others."
- 6 "Credit cards" include shopping credit receivables, card loans, etc.

**(D) Information of securitization exposure retained or purchased****–Exposure by risk weight category and underlying asset type and amount of required capital–**

Risk weight	(Billions of yen)								
	As of March 31, 2009								
	Credit cards	Residential mortgage loans	Auto loans	Lease payment receivables	Account and note receivables	Real estate	Others	Total	Required capital
Up to 20%	143.3	—	97.8	384.9	559.0	—	81.2	1,266.3	8.3
Up to 50%	30.0	—	—	4.4	17.4	—	2.2	54.1	1.3
Up to 100%	11.4	—	—	7.8	0.5	—	8.4	28.3	1.7
Up to 250%	0.7	—	30.4	—	1.4	—	—	32.5	3.3
Up to 650%	—	—	—	—	22.5	—	—	22.5	6.3
Over 650%	—	—	—	—	—	—	—	—	—
<b>Deduction from capital</b>	—	—	—	—	—	—	—	—	—
<b>Total</b>	<b>185.5</b>	<b>—</b>	<b>128.2</b>	<b>397.2</b>	<b>601.0</b>	<b>—</b>	<b>92.0</b>	<b>1,404.0</b>	<b>21.0</b>
Exposure whose underlying assets are foreign assets	78.8	—	—	21.6	56.0	—	77.0	233.4	n.a.

## Notes:

- Securitization exposure retained or purchased includes unused portions of securitization programs that are subject to allocation of required capital.
- The classification of transactions of which the underlying assets are foreign assets is conducted according to the principal underlying assets of each transaction.

Risk weight	(Billions of yen)								
	As of March 31, 2010								
	Credit cards	Residential mortgage loans	Auto loans	Lease payment receivables	Account and note receivables	Real estate	Others	Total	Required capital
Up to 20%	161.5	—	74.3	282.5	401.4	—	53.3	973.3	6.2
Up to 50%	2.3	—	—	5.7	29.9	—	—	38.0	0.9
Up to 100%	—	—	43.5	5.0	1.7	—	—	50.3	2.8
Up to 250%	—	—	—	—	1.2	—	—	1.2	0.1
Up to 650%	—	—	—	—	2.9	—	—	2.9	0.6
Over 650%	—	—	—	—	—	—	—	—	—
<b>Deduction from capital</b>	—	—	—	—	—	—	—	—	—
<b>Total</b>	<b>163.9</b>	<b>—</b>	<b>117.9</b>	<b>293.3</b>	<b>437.3</b>	<b>—</b>	<b>53.3</b>	<b>1,065.8</b>	<b>10.8</b>
Exposure whose underlying assets are foreign assets	18.6	—	—	9.3	37.4	—	30.2	95.6	n.a.

## Notes:

- Securitization exposure retained or purchased includes unused portions of securitization programs that are subject to allocation of required capital.
- The classification of transactions of which the underlying assets are foreign assets is conducted according to the principal underlying assets of each transaction.

**–Credit risk-weighted assets calculated pursuant to Article 15 of Supplementary Provisions of the FSA Capital Adequacy Ratio Notice–**

	(Billions of yen)	
	As of March 31, 2009	As March 31, 2010
Credit risk-weighted assets calculated pursuant to Article 15 of Supplementary Provisions of the FSA Capital Adequacy Ratio Notice	—	—

• Securitization exposure as investor

(E) Information of securitization exposure retained or purchased

–Exposure by risk weight category and underlying asset type and amount of required capital–

(Billions of yen)

Risk weight	As of March 31, 2009								Required capital
	Credit cards	Residential mortgage loans	Auto loans	Lease payment receivables	Corporate	Real estate	Others	Total	
Up to 20%	60.4	1,347.2	329.6	295.1	299.0	576.2	135.0	3,042.8	29.5
Up to 50%	—	14.1	—	2.7	38.7	150.8	11.2	217.7	5.8
Up to 100%	5.9	21.3	0.1	0.9	11.6	17.8	1.0	58.9	3.8
Up to 250%	—	0.9	—	—	0.9	—	—	1.9	0.3
Up to 650%	—	1.3	—	—	2.3	0.2	0.0	3.9	1.6
Over 650%	—	—	—	—	—	—	—	—	—
<b>Deduction from capital</b>	<b>—</b>	<b>3.9</b>	<b>—</b>	<b>—</b>	<b>13.7</b>	<b>28.5</b>	<b>8.1</b>	<b>54.3</b>	<b>37.9</b>
<b>Total</b>	<b>66.4</b>	<b>1,388.9</b>	<b>329.7</b>	<b>298.7</b>	<b>366.4</b>	<b>773.6</b>	<b>155.6</b>	<b>3,379.7</b>	<b>79.2</b>
Exposure whose underlying assets are foreign assets	23.6	193.8	53.4	18.3	254.7	54.7	16.9	615.8	n.a.
Exposure on resecuritizations	—	0.3	—	—	8.0	0.0	3.1	11.5	n.a.

Notes:

- Subordinated contributions for managed collateralized loan obligations (“CLO”), etc., are included in the above table as exposure as investor even when the assets underlying those CLOs, etc., include exposures that were originated by us. Our subordinated contributions for those managed CLOs, etc., were ¥6.5 billion (treated as deduction from capital for purpose of capital adequacy ratio calculation), and our sale of assets to such managed CLOs, etc., during the fiscal year was ¥0.8 billion.
- Classification based on type of underlying assets is conducted according to the principal underlying asset type for each transaction. Transactions that are difficult to classify are included under “Others.”
- “Credit cards” include shopping credit receivables, card loans, etc.
- The classification of transactions of which the underlying assets are foreign assets is conducted according to the principal underlying assets of each transaction.
- Securitization exposure retained or purchased whose risk transfer (hedge) effects are reflected in the calculation of capital adequacy ratio is categorized as securitization exposure as originator.
- Securitization exposure as investor includes ¥45.4 billion liquidity facilities that we provide to ABCP programs sponsored by other companies.
- We classify securitization products whose principal underlying assets are securitization products such as ABS, etc. (e.g., ABS CDO) as “resecuritizations.”

(Billions of yen)

Risk weight	As of March 31, 2010								Required capital
	Credit cards	Residential mortgage loans	Auto loans	Lease payment receivables	Corporate	Real estate	Others	Total	
Up to 20%	36.5	1,494.4	203.3	180.7	248.8	277.0	119.6	2,560.6	22.7
Up to 50%	—	9.3	0.8	2.0	42.8	204.6	10.5	270.4	7.0
Up to 100%	5.7	20.4	0.2	0.7	13.4	29.1	2.9	72.7	5.1
Up to 250%	—	1.6	—	—	1.1	0.6	—	3.4	0.7
Up to 650%	—	1.8	—	1.0	1.8	5.8	—	10.6	3.9
Over 650%	—	—	—	—	—	—	—	—	—
<b>Deduction from capital</b>	<b>—</b>	<b>7.5</b>	<b>—</b>	<b>0.6</b>	<b>16.2</b>	<b>32.1</b>	<b>8.7</b>	<b>65.3</b>	<b>49.5</b>
<b>Total</b>	<b>42.3</b>	<b>1,535.3</b>	<b>204.5</b>	<b>185.3</b>	<b>324.5</b>	<b>549.3</b>	<b>141.8</b>	<b>2,983.3</b>	<b>89.1</b>
Exposure whose underlying assets are foreign assets	25.9	188.8	12.3	10.7	229.1	48.4	11.3	526.7	n.a.
Exposure on securitizations	—	0.3	—	—	7.6	—	3.2	11.2	n.a.

## Notes:

- Subordinated contributions for managed collateralized loan obligations (“CLO”), etc., are included in the above table as exposure as investor even when the assets underlying those CLOs, etc., include exposures that were originated by us. Our subordinated contributions for those managed CLOs, etc., were ¥5.3 billion (treated as deduction from capital for purpose of capital adequacy ratio calculation), and our sale of assets to such managed CLOs, etc., during the fiscal year was ¥1.0 billion.
- Classification based on type of underlying assets is conducted according to the principal underlying asset type for each transaction. Transactions that are difficult to classify are included under “Others.”
- “Credit cards” include shopping credit receivables, card loans, etc.
- The classification of transactions of which the underlying assets are foreign assets is conducted according to the principal underlying assets of each transaction.
- Securitization exposure retained or purchased whose risk transfer (hedge) effects are reflected in the calculation of capital adequacy ratio is categorized as securitization exposure as originator.
- Securitization exposure as investor includes ¥12.8 billion liquidity facilities that we provide to ABCP programs sponsored by other companies.
- We classify securitization products whose principal underlying assets are securitization products such as ABS, etc. (e.g., ABS CDO) as “resecritizations.”

**–Credit risk-weighted assets calculated pursuant to Article 15 of Supplementary Provisions of the FSA Capital Adequacy Ratio Notice–**

Credit risk-weighted assets calculated pursuant to Article 15 of Supplementary Provisions of the FSA Capital Adequacy Ratio Notice	(Billions of yen)	
	As of March 31, 2009	As of March 31, 2010
	—	—

Note that, in addition to the above, within the provision of credit in the form of eligible servicer cash advance, set forth in Article 246 of the Notice, there was an undrawn portion to which no required capital is allocated.

The balances of such portion as of March 31, 2009 and 2010 were ¥28.3 billion and ¥40.8 billion, respectively.



■ **Market risk**

See pages 48 to 54 for information regarding market risk.

■ **Operational risk**

See pages 54 to 57 for information regarding operational risk.

■ **Equity exposure in banking book**

**(15) Risk management related to equity exposure in banking book**

With regard to equities in our banking book, we manage default risk through our credit risk management structure and price fluctuation risk through our market risk management structure.

With regard to subsidiaries and related companies in which we invest, we manage their risks on a consolidated basis, and manage them appropriately in accordance with their management classification.

In addition, securities, a part of equity exposure, are valued as follows: Japanese stocks with quoted market prices are valued based on the average quoted market price over the month preceding the consolidated balance sheet date; other securities which have readily determinable fair values are valued at the quoted market price if available, or otherwise based on their reasonable value at the consolidated balance sheet date (cost of securities sold is calculated primarily by the moving average method); and other securities the fair values of which are extremely difficult to determine are stated at acquisition cost or amortized cost and determined by the moving average method.

**(16) Status of equity exposure in banking book**

**(A) Amounts stated in consolidated balance sheet**

	(Billions of yen)			
	As of March 31, 2009		As of March 31, 2010	
	Consolidated balance sheet amount	Fair value	Consolidated balance sheet amount	Fair value
Exposure of listed stock, etc.	2,625.2	2,625.2	2,932.0	2,932.0
Other equity exposure	461.3	n.a.	516.3	n.a.
<b>Total</b>	<b>3,086.6</b>	<b>n.a.</b>	<b>3,448.3</b>	<b>n.a.</b>

Note: The above figures include only Japanese and foreign stocks.

**(B) Gains and losses on sales related to equity exposure**

	(Billions of yen)					
	For the Fiscal year ended March 31, 2009			For the Fiscal year ended March 31, 2010		
	Gains and losses on sales	Gains on sales	Losses on sales	Gains and losses on sales	Gains on sales	Losses on sales
<b>Sale of equity exposure</b>	53.7	100.2	46.5	87.5	106.9	19.3

Note: The above figures represent gains and losses on sales of stocks in our consolidated statement of income.

**(C) Gains and losses from write-offs related to equity exposure**

	(Billions of yen)	
	For the Fiscal year ended March 31, 2009	For the Fiscal year ended March 31, 2010
	Gains and losses from write-offs	Gains and losses from write-offs
<b>Write-offs of equity exposure</b>	<b>(482.1)</b>	<b>(53.5)</b>

Note: The above figures represent gains and losses on devaluation of stocks in our consolidated statement of income.

**(D) Unrealized gains and losses recognized in the consolidated balance sheet and not recognized in the consolidated statement of income**

	(Billions of yen)					
	As of March 31, 2009			As of March 31, 2010		
	Net unrealized gains	Unrealized gains	Unrealized losses	Net unrealized gains	Unrealized gains	Unrealized losses
<b>Equity exposure</b>	<b>(178.6)</b>	<b>290.5</b>	<b>469.2</b>	<b>359.5</b>	<b>568.0</b>	<b>208.5</b>

Note: The above figures include only Japanese and foreign stocks.

**(E) Unrealized gains and losses not recognized in the consolidated balance sheet or in the consolidated statement of income**

None as of March 31, 2009 and 2010.

**(F) Equity exposure by portfolio classification**

	(Billions of yen)	
	<u>As of March 31, 2009</u>	<u>As of March 31, 2010</u>
PD/LGD approach	817.4	1,022.2
Market-based method (simple risk weight method)	332.0	292.9
Market-based method (internal models approach)	—	—
Transitional measure applied	<u>2,389.5</u>	<u>2,533.2</u>
<b>Total</b>	<b><u>3,538.9</u></b>	<b><u>3,848.4</u></b>

## **Credit Risk Management**

We define credit risk as the Mizuho group's exposure to the risk of losses that may be incurred due to a decline in, or total loss of, the value of assets (including off-balance-sheet instruments), as a result of deterioration in obligors' financial position. We have established the methods and structures necessary for grasping and managing credit risk, which has become increasingly complex due to financial deregulation, internationalization and the growing sophistication of transactions. Mizuho Financial Group manages credit risk for the Mizuho group as a whole. More specifically, we have adopted two different but mutually complementary approaches in credit risk management. The first approach is "credit management," in which we manage the process for each individual transaction and individual obligor from execution until collection, based on our assessment of the credit quality of the customer. Through this process, we curb losses in the case of a credit event. The second is "credit portfolio management," in which we utilize statistical methods to assess the potential for losses related to credit risk. Through this process, we identify credit risk and respond appropriately.

### ***Credit Risk Management Structure***

#### *Credit Risk Management of the Mizuho Group*

Our board of directors determines the Mizuho group's key matters pertaining to credit risk management. In addition, the portfolio management committee of Mizuho Financial Group discusses and coordinates the basic policies in connection with credit risk management and matters in connection with overall credit portfolio management and credit risk monitoring for the Mizuho group. Under the control of the Chief Risk Officer of Mizuho Financial Group, the Risk Management Division and the Credit Risk Management Division jointly monitor, analyze and submit suggestions concerning credit risk and formulate and execute plans in connection with basic matters pertaining to credit risk management.

#### *Credit Risk Management at Our Principal Banking Subsidiaries and Other Core Group Companies*

Our principal banking subsidiaries and other core group companies manage their credit risk according to the scale and nature of their exposures in line with basic policies set forth by Mizuho Financial Group. The board of directors of each company determines key matters pertaining to credit risk management. Their respective business policy committees are responsible for discussing and coordinating overall management of their individual credit portfolios and transaction policies towards obligors. The Chief Risk Officer of each principal banking subsidiary and core group company is responsible for matters relating to planning and implementing credit risk management. The credit risk management division of each principal banking subsidiary is responsible for planning and administering credit risk management and conducting credit risk measuring and monitoring, and such division regularly presents reports regarding its risk management situation to Mizuho Financial Group. Each credit division determines policies and approves/disapproves individual transactions in terms of credit review, credit management, and collection from customers in accordance with the lines of authority set forth by each principal banking subsidiary. In addition, from the standpoint of internal controls, each of our principal banking subsidiaries has established internal audit divisions that are independent of the business divisions in order to ensure appropriate credit risk management.

#### *Individual Credit Management*

Our principal banking subsidiaries use a unified credit rating system and credit risk measurement tools to ascertain and monitor the status of their portfolios. They are also improving their credit decisions and post-transaction management functions by examining individual transactions from these viewpoints, providing internal audits and risk management guidance to individual business promotion offices. Mizuho Securities and other core group companies follow credit risk management procedures that suit the characteristics of their respective business sectors.

#### *Credit Code*

The basic code of conduct for all of our officers and employees engaged in the credit business is set forth in our credit code. Seeking to fulfill the bank's public and social role, our basic policy for credit business is determined in light of fundamental principles focusing on public welfare, safety, growth and profitability.

#### *Internal rating system*

One of the most important elements of the risk management infrastructure of our principal banking subsidiaries is the use of an internal rating system that consists of credit ratings and pool allocations. Credit ratings consist of obligor ratings which represent the level of credit risk of the obligor, and transaction ratings which represent the possibility of ultimately incurring losses related to each individual claim by taking into consideration the nature of any collateral or guarantee and the seniority of the claim. In principle, obligor ratings apply to all obligors and are subject to regular reviews at least once a year to reflect promptly the fiscal period end financial results of the obligors, as well as special reviews as required whenever an obligor's credit standing changes. This enables our principal banking subsidiaries to monitor both individual obligors and the status of the overall portfolio in a timely fashion. Because we consider obligor ratings to be an initial phase of the self-assessment process regarding the quality of our loans and off-balance-sheet instruments, such obligor ratings are closely linked to the obligor classifications and are an integral part of the process for

determining the provision for loan losses and charge-offs in our self-assessment of loans and off-balance-sheet instruments.

Pool allocations are applied to small claims that are less than a specified amount by pooling customers and claims with similar risk characteristics and assessing and managing the risk for each such pool. We efficiently manage credit risk and credit screening by dispersing a sufficient number of small claims within each pool. We generally review the appropriateness and effectiveness of our approach to obligor ratings and pool allocations once a year in accordance with predetermined procedures.

### *Self-assessment, provision for loan losses and off-balance-sheet instruments and charge-offs*

We conduct self-assessment of assets to ascertain the status of assets both as an integral part of credit risk management and in preparation for appropriate accounting treatment, including provision for loan losses and off-balance-sheet instruments and charge-offs. During the process of self-assessment, obligors are categorized into certain groups taking into consideration their financial condition and their ability to make payments, and credit ratings are assigned to all obligors, in principle, to reflect the extent of their credit risks. The related assets are then categorized into certain classes based on the risk of impairment. This process allows us to identify and control the actual quality of assets and determine the appropriate accounting treatment, including provision for loan losses and off-balance-sheet instruments and charge-offs. Specifically, the credit risk management division of each of our principal subsidiaries is responsible for the overall control of the self-assessment of assets of the respective banking subsidiaries, cooperating with the administrative divisions specified for each type of asset, including loan portfolios and securities, in executing and managing self-assessments.

### *Credit review*

Prevention of new impaired loans through routine credit management is important in maintaining the quality of our overall loan assets. Credit review involves analysis and screening of each potential transaction within the relevant business division. In case the screening exceeds the authority of the division, the credit division at headquarters carries out the review. The credit division has specialist departments for different industries, business sizes and regions, carries out timely and specialized examinations based on the characteristics of the customer and its market, and provides appropriate advice to the business division. In addition, in the case of obligors with low credit ratings and high downside risks, the business division and credit division jointly clarify their credit policy and in appropriate cases assist obligors at an early stage in working towards credit soundness.

### *Collection and disposal of impaired loans*

With respect to collection and disposal of impaired loans, our specialist unit maintains central control and pursues corporate restructuring or collection efforts, as appropriate, toward taking the impaired loans off-balance. Specifically, we believe that supporting the restructuring efforts of corporations is an important role for financial institutions, and we support corporations undergoing restructuring by reviewing business plans, advising on restructuring methods and utilizing corporate restructuring schemes such as divestitures and mergers and acquisitions, taking advantage of our group-wide resources. These efforts have been steadily producing satisfactory results. In addition, we work on final disposal of impaired loans efficiently and swiftly by conducting bulk sales and by utilizing Mizuho Servicing Co., Ltd., our subsidiary that specializes in performing debt collection services for our group companies.

## ***Portfolio Management***

### *Risk Measurement*

We use statistical methods to manage the possibility of losses by measuring the expected average loss for a one-year risk horizon (“Expected Loss”), the maximum loss within a certain confidence interval (“credit VaR”). The difference between expected loss and credit VaR is measured as the credit risk amount (“Unexpected Loss”).

In establishing transaction spread guidelines for credit transactions, we aim to ensure an appropriate return from the transaction in light of the level of risk by utilizing credit cost data as a reference. Also, we monitor our credit portfolio from various perspectives and set certain limits so that losses incurred through a hypothetical realization of the full credit VaR would be within the amount of risk capital and loan loss reserves.

### *Risk Control Methods*

We recognize two types of risk arising from allowing too large a proportion of overall credit risk to be allocated in certain areas. One type is “credit concentration risk,” which stems from granting excessive credit to certain individual counterparties. The other type is “chain-reaction default risk,” which arises from granting excessive credit to certain corporate groups, industrial sectors and other groupings. We make appropriate management to control these risks in line with our specific guidelines for each. The individual risk management divisions of our principal banking subsidiaries are responsible for monitoring adherence to these guidelines and reporting to their respective business policy committees.

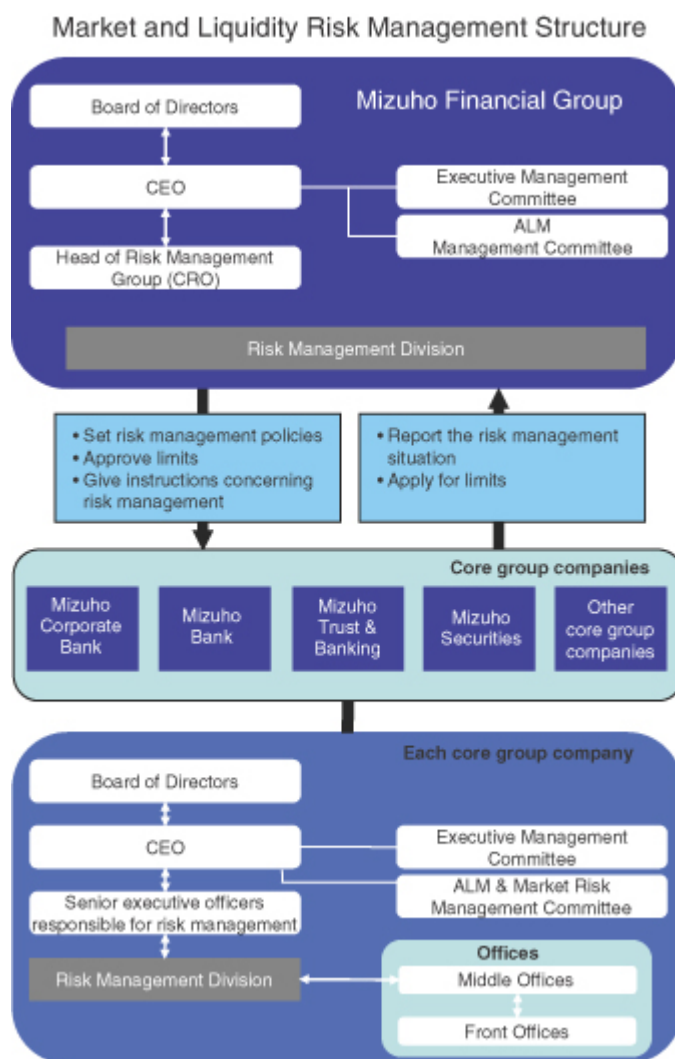
### Portfolios of Our Principal Banking Subsidiaries and Certain Other Core Group Companies

Mizuho Bank’s portfolio is diversified among relatively small accounts centered on individuals, domestic corporations including mainly small and medium-sized enterprises and middle-market corporations, public sector entities and other customers in Japan. While Mizuho Corporate Bank’s credit portfolio consists primarily of loans to Japanese public companies and other major Japanese enterprises, it also includes a significant proportion of loans to overseas corporations, including foreign subsidiaries of Japanese corporations, that are diversified in terms of the regions in which the borrowers are located. While retaining the principal features of each of the two banking subsidiaries’ respective portfolios, we aim to reduce expected losses while simultaneously utilizing sophisticated financial tools based on which they make strategic acquisitions and sales of assets. While closely monitoring the potential for unexpected losses, they also aim to raise overall group capital efficiency, boost profitability and shareholder value, and enhance the sophistication of their credit risk management.

### Market and Liquidity Risk Management

We define market risk as the risk of losses incurred by the group due to fluctuations in interest rates, stock prices and foreign exchange rates. Our definition includes the risk of losses incurred when it becomes impossible to execute transactions in the market because of market confusion or losses arising from transactions at prices that are significantly less favorable than usual. We define liquidity risk as the risk of losses arising from funding difficulties due to a deterioration in our financial position that makes it difficult for us to raise necessary funds or that forces us to raise funds at significantly higher interest rates than usual. Mizuho Financial Group manages market and liquidity risk for the Mizuho group as a whole.

The following diagram shows our risk management structure:



## ***Market Risk Management Structure***

### ***Market Risk Management of the Mizuho Group***

Our board of directors determines key matters pertaining to market risk management policies. The ALM & market risk management committee of Mizuho Financial Group broadly discusses and coordinates matters relating to basic asset and liability management policies, risk planning and market risk management and proposes responses to emergencies such as sudden market changes. The Chief Risk Officer of Mizuho Financial Group is responsible for matters relating to market risk management planning and operations.

The Risk Management Division of Mizuho Financial Group is responsible for monitoring market risk, reports and analyses, proposals, setting limits and guidelines, and formulating and implementing plans relating to market risk management. The Risk Management Division assesses and manages the overall market risk of the Mizuho group. It also receives reports from our principal banking subsidiaries and other core group companies on their market risk management that enable it to obtain a solid grasp of the risk situation, submitting reports to the chief executive officer on a daily basis and to our board of directors and the executive management committee of Mizuho Financial Group on a regular basis.

To manage market risk, we set limits that correspond to risk capital allocations according to the risk profiles of our principal banking subsidiaries and other core group companies and thereby prevent market risk from exceeding our ability to withstand losses based on our financial strength represented by capital, etc. The amount of risk capital allocated to market risk corresponds to VaR and additional costs that may arise in order to close relevant positions. For trading and banking activities, we set limits for VaR and for losses. For banking activities, we set position limits based on interest rate sensitivity as needed.

These limits are discussed and coordinated by the ALM & market risk management committee, discussed further by the executive management committee, then determined by the chief executive officer. Various factors are taken into account including business strategies, historical limit usage ratios, risk-bearing capacity (profits, total capital and risk management systems), profit targets and the market liquidity of the products involved.

### ***Market Risk Management at Our Principal Banking Subsidiaries and Other Core Group Companies***

Our principal banking subsidiaries and Mizuho Securities which account for most of the Mizuho group's exposure to market risk have formulated their basic policies in line with the basic policies determined by Mizuho Financial Group. Their boards of directors determine important matters relating to market risk management while their chief executive officers are responsible for controlling market risk. Their respective business policy committees, including their ALM & market risk management committees, are responsible for overall discussion and coordination of market risk management. Specifically, these committees discuss and coordinate matters relating to basic asset and liability management policies, risk planning and market risk management and propose responses to emergencies such as sudden market changes. The Chief Risk Officer of each subsidiary is responsible for matters pertaining to planning and implementing market risk management. Based on a common Mizuho group risk capital allocation framework, the above-mentioned companies manage market risk by setting limits according to the risk capital allocated to market risk by Mizuho Financial Group.

These companies have established specialized company-wide market risk management divisions to provide integrated monitoring of market risk, submit reports, analyses and proposals, set limits and formulate and implement plans relating to market risk management. The risk management divisions of each company submit reports on the status of market risk management to their respective chief executive officers and top management on a daily basis, and to their board of directors and executive management committee on a regular basis. They also provide regular reports to Mizuho Financial Group. To provide a system of mutual checks and balances in market operations, they have established middle offices specializing in risk management that are independent of their front offices, which engage in market transactions, and their back offices, which are responsible for book entries and settlements. When VaR is not adequate to control risk, the middle offices manage risk using additional risk indices, carry out stress tests and set stop loss limits as needed. They monitor their market liquidity risk for individual financial products in the market while taking turnover and other factors into consideration.

## ***Liquidity Risk Management Structure***

### ***Liquidity Risk Management of the Mizuho Group***

Our liquidity risk management structure is generally the same as the market risk management structure described above. However, the head of the Financial Control & Accounting Group of Mizuho Financial Group is additionally responsible for matters relating to planning and running cash flow management operations, while the Financial Planning Division is responsible for monitoring and adjusting the cash flow management situation and for planning and implementing cash flow management. Reports on the cash flow situation are submitted to the ALM & market risk management committee, the executive management committee and the chief executive officer.

We measure liquidity risk using indices pertaining to cash flow, such as limits on funds raised in the market. Limits on liquidity risk are discussed and coordinated by the ALM & market risk management committee, discussed further by the executive management committee and determined by the chief executive officer. We have established classifications for the cash flow conditions affecting the group, ranging from “normal” to “cause for concern” and “critical,” and have established procedures for dealing with cases which are deemed to fall into the “cause for concern” or “critical” categories. In addition, we have constructed a system under which we will be able to respond smoothly in the event of emergency situations that affect our funding by establishing action plans.

### ***Liquidity Risk Management at Our Principal Banking Subsidiaries and Other Core Group Companies***

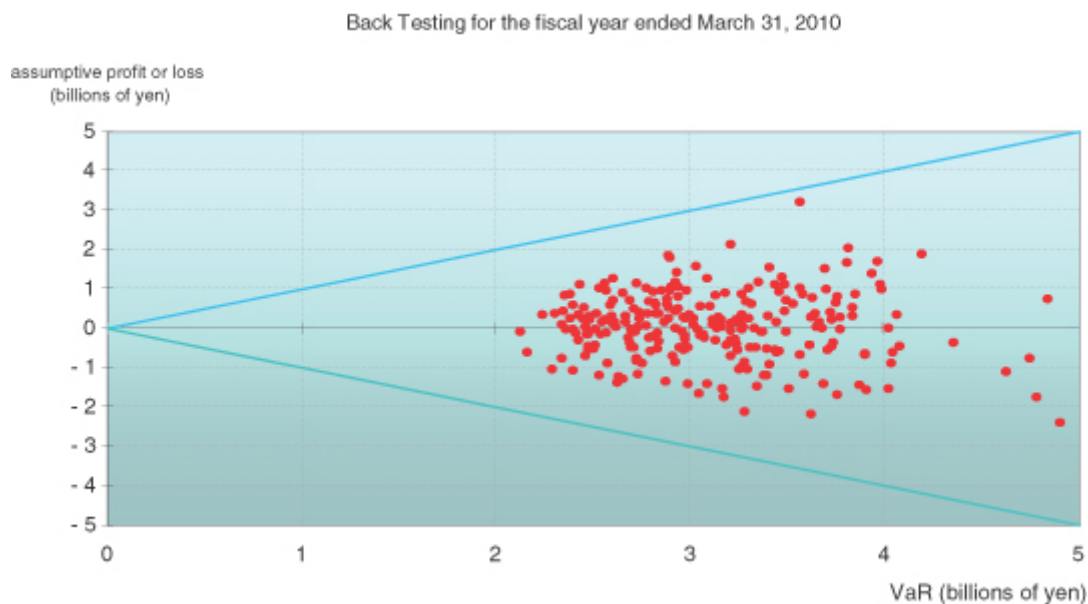
The liquidity risk management structures of Mizuho Corporate Bank, Mizuho Bank, Mizuho Trust & Banking and Mizuho Securities are generally the same as the aforementioned market risk management structures, but the senior executives responsible for risk management are responsible for matters pertaining to planning and conducting liquidity risk management, while the senior executives of the asset and liability management and trading units are responsible for matters pertaining to planning and conducting cash flow management.

The methodologies used for ensuring precise control of liquidity risk include the formulation of management indices pertaining to cash flow, such as limits on funds raised in the market. As with Mizuho Financial Group, the above-mentioned companies have established classifications for the cash flow affecting them, ranging from “normal” to “cause for concern” and “critical,” and have established procedures for cases which are deemed to fall into the “cause for concern” or “critical” categories.

Each subsidiary has adopted stringent controls that call for the submission of reports on liquidity risk management and cash flow management to the ALM & market risk management committee and other business policy committees, the executive management committee and the chief executive officer of each subsidiary.

## ***Back Testing and Stress Testing***

In order to evaluate the effectiveness of market risk measurements calculated using the value-at-risk method, we carry out regular back tests to compare value-at-risk with assumptive profits and losses. Assumptive profits and losses accounts for general market risk. The graph below shows daily value-at-risk of trading activities for the fiscal year ended March 31, 2010, and the corresponding paired distribution of profits and losses:





We had no case where profits/losses exceeded value-at-risk during the period.

Because the value-at-risk method is based on statistical assumptions, we conduct stress testing to simulate the levels of losses that could be incurred in cases where the market moves suddenly to levels that exceed these assumptions. The stress testing methods we use include the calculation of losses on the basis of the largest fluctuations occurring over a period of more than five years and the calculation of losses based on market fluctuations occurring during historical market events. In addition, we conduct stress testing based on a sharp drop in the price of securitization and other products due to diminished market liquidity. The table below shows the assumed maximum loss results of stress testing in trading activities using the methods described above:

<u>Assumed maximum loss results</u>	<u>As of March 31, 2010</u> <u>(in billions of yen)</u>
Assumed maximum loss result calculated by stress testing (holding period: one month)	¥ 30.3
Assumed maximum loss result calculated by stress testing based on a sharp drop in the price of securitization and other products due to diminished market liquidity (holding period: one year)	¥ 35.4

### **Outlier Criteria**

As part of the new capital adequacy requirements under Basel II, the losses arising from a banking book in hypothetical interest rate shock scenarios under certain stress conditions are calculated and compared with the sum of Tier 1 and Tier 2 capital. If the interest rate risk of the banking book leads to an economic value decline of more than 20% of the sum of Tier 1 and Tier 2 capital, we will be deemed an “outlier” and may be required to reduce the banking book risk or adopt other responses. We measure losses arising from our banking book each month as a part of our stress tests.

The table below shows the results of calculations of losses in the banking book in cases where interest rate fluctuations occur under stress conditions. The results of calculations of losses in the banking book show that they are 8.8% of broadly-defined capital. Because the amount of risk on the banking book is therefore well under the 20% threshold and within controllable limits, we do not fall under the “outlier” category. The loss ratio to capital increased from the previous fiscal year due mainly to the expansion of interest rate risk related to the U.S. dollar for the fiscal year ended March 31, 2010.

<u>Results of calculations under the outlier framework</u>	<u>Amount of loss</u>	<u>Broadly-defined capital</u>	<u>Loss ratio to capital</u>
	(in billions of yen, except percentages)		
As of March 31, 2008	¥ 679.3	¥ 7,708.3	8.8%
As of March 31, 2009	532.4	6,223.6	8.5
As of March 31, 2010	681.4	7,658.0	8.8
Effect of yen interest rate	487.0		
Effect of dollar interest rate	128.8		
Effect of euro interest rate	56.5		

### **Notes:**

- (1) In the above results of calculations of losses, a part of demand deposits without fixed intervals for amending applicable interest rates is deemed core deposits and is treated accordingly in the calculation.
- (2) For the interest rate shock scenario used in connection with the above figures, we generate annual rate fluctuation data for five years derived from daily raw historical interest rate data of the past six years and then apply the actual fluctuation data, which show a rise in interest rates, at a 99.0% confidence level to the shock scenario.

### **Value-at-Risk**

We use the value-at-risk (VaR) method, supplemented with stress testing, as our principal tool to measure market risk. The VaR method measures the maximum possible loss that could be incurred due to market movements within a certain time period (or holding period) and degree of probability (or confidence interval).

### **Trading Activities**

VaR related to our trading activities is based on the following:

- variance co-variance model for linear risk and Monte-Carlo simulation for non-linear risk;
- confidence interval: one-tailed 99.0%;
- holding period of one day; and
- historical observation period of one year.

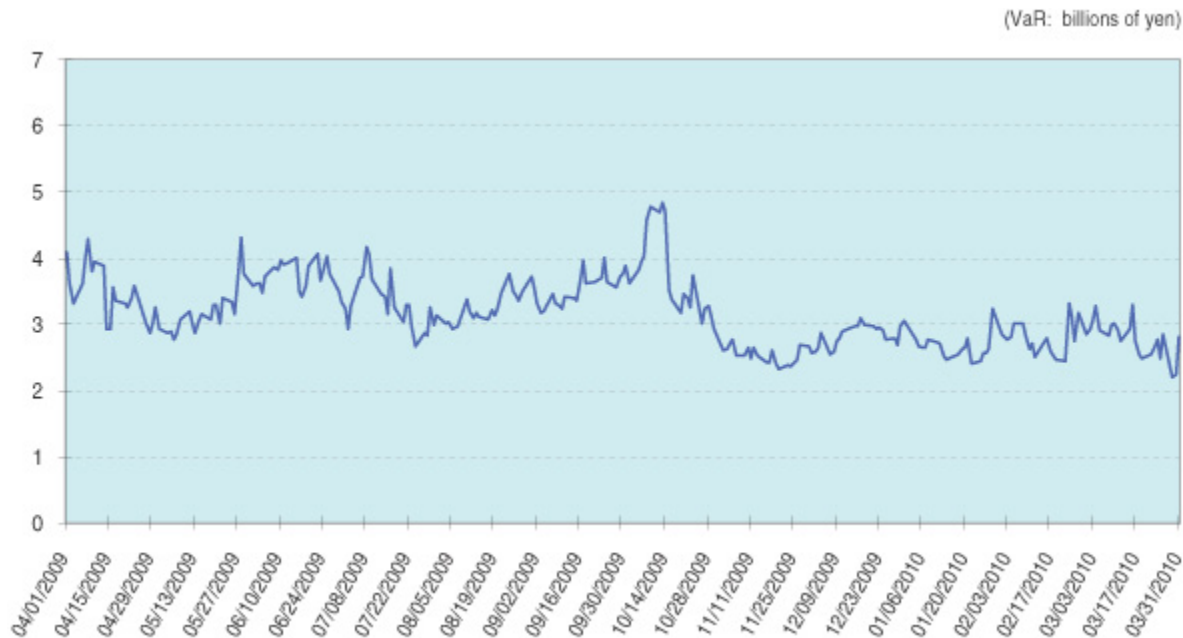
The following tables show the VaR related to our trading activities by risk category for the fiscal years ended March 31, 2008, 2009 and 2010 and as of March 31, 2008, 2009 and 2010:

Risk category	Fiscal year ended March 31, 2008			As of March 31, 2008
	Daily average	Maximum	Minimum	
	(in billions of yen)			
Interest rate	¥ 2.3	¥ 3.8	¥ 1.5	¥ 2.6
Foreign exchange	2.0	6.4	0.9	4.4
Equities	1.6	2.8	0.8	1.3
Commodities	0.2	0.3	0.1	0.1
Total	¥ 4.4	¥ 7.9	¥ 3.0	¥ 6.7

Risk category	Fiscal year ended March 31, 2009			As of March 31, 2009
	Daily average	Maximum	Minimum	
	(in billions of yen)			
Interest rate	¥ 2.3	¥ 3.9	¥ 1.6	¥ 2.2
Foreign exchange	2.4	5.1	1.0	2.6
Equities	1.3	2.3	0.3	0.5
Commodities	0.2	0.3	0.0	0.0
Total	¥ 4.7	¥ 7.7	¥ 3.3	¥ 3.8

Risk category	Fiscal year ended March 31, 2010			As of March 31, 2010
	Daily average	Maximum	Minimum	
	(in billions of yen)			
Interest rate	¥ 1.7	¥ 2.9	¥ 1.0	¥ 1.2
Foreign exchange	1.4	2.7	0.4	2.1
Equities	1.2	3.2	0.3	0.3
Commodities	0.1	0.3	0.0	0.0
Total	¥ 3.1	¥ 4.8	¥ 2.1	¥ 2.8

The following graph shows VaR figures of our trading activities for the fiscal year ended March 31, 2010:



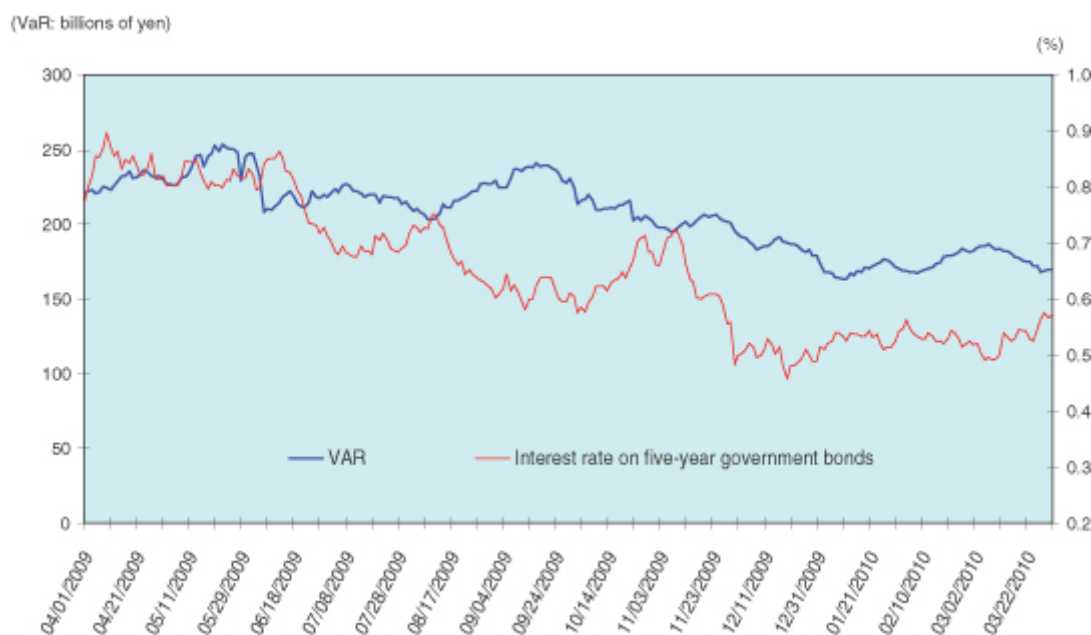
The following table shows VaR figures of our trading activities for the fiscal years indicated:

	Fiscal years ended March 31,				
	2008	2009		2010	Change
	(in billions of yen, except number of cases)				
As of fiscal year end	¥ 6.7	¥ 3.8	¥ 2.8	¥ (0.9)	
Maximum	7.9	7.7	4.8	(2.8)	
Minimum	3.0	3.3	2.1	(1.1)	
Average	4.4	4.7	3.1	(1.5)	
The number of cases where profits/losses exceeded VaR	no cases	1	no cases		

#### Non-trading Activities

The VaR related to our banking activities is based on the same conditions as those of trading activities, but the holding period is one month.

The graph below shows the VaR related to our banking activities excluding our strategic equity portfolio for the year ended March 31, 2010.



The following table shows the VaR figures relating to our banking activities for the fiscal years indicated:

	Fiscal years ended March 31,			
	2008	2009		2010
	(in billions of yen)			
As of fiscal year end	¥258.6	¥248.1	¥167.0	¥(81.1)
Maximum	303.9	335.8	255.6	(80.2)
Minimum	160.5	173.3	160.2	(13.0)
Average	226.8	251.5	206.4	(45.0)

VaR is a commonly used market risk management technique. However, VaR models have the following shortcomings:

- By its nature as a statistical approach, VaR estimates possible losses over a certain period at a particular confidence level using past market movement data. Past market movement, however, is not necessarily a good indicator of future events, particularly potential future events that are extreme in nature.
- VaR may underestimate the probability of extreme market movements.
- The use of a 99.0% confidence level does not take account of, nor makes any statement about, any losses that might occur beyond this confidence level.
- VaR does not capture all complex effects of various risk factors on the value of positions and portfolios and could underestimate potential losses.

We also conduct interest sensitivity analyses of interest risk, our main source of market risk. The following table shows sensitivity to yen interest risk in our banking activities as of the dates indicated. As shown in the table, we have reduced overall sensitivity to the risk of future increases in interest rates. Interest rate sensitivity (10 BPV) shows how much net present value varies when interest rates rise by 10 basis (0.1%), and it explains the impact of interest rate movements on net present value when short- and long-term interest rates behave differently.

	As of March 31,			Change
	2008	2009	2010	
	(in billions of yen)			
Up to one year	¥ (7)	¥ (9)	¥(10)	¥ (0)
From one to five years	(14)	(25)	(28)	(3)
Over five years	(27)	(18)	(14)	4
Total	<u>¥(48)</u>	<u>¥(53)</u>	<u>¥(53)</u>	<u>¥ 0</u>

### Market Risk Equivalent

In order to calculate the amount of capital necessary to meet the capital requirements relating to market risk (the “market risk equivalent”), we apply internal models to calculate general market risk (risks related to factors that apply generally to the market, e.g., interest rates, foreign exchange rates) and the standardized measurement method to calculate specific risks (risks other than general market risk, e.g., credit quality and market liquidity of an individual security or instrument). In addition, our internal models are applied to trading transactions with market liquidity based on the relevant holding period. Under the internal models, the market risk equivalent is calculated by taking the greater of (i) VaR on the calculation date and (ii) the average VaR for the preceding 60 business days (including the calculation date) multiplied by a multiplication factor ranging from 3.00 to 4.00 that is determined based on the number of times VaR is exceeded upon back testing.

The following table shows total market risk equivalent as of the dates indicated calculated using the standardized measurement method and internal models:

	As of March 31,		Change
	2009	2010	
	(in billions of yen)		
Calculated using standardized measurement method	¥ 64.1	¥ 77.9	¥ 13.7
Calculated using internal models	43.2	25.9	(17.2)
Total market risk equivalent	<u>¥107.3</u>	<u>¥103.8</u>	<u>¥ (3.5)</u>

Note:

VaR used to calculate Market Risk Equivalent is based on the following:

- variance co-variance model for linear risk and Monte-Carlo simulation for non-linear risk;
- confidence interval: one-tailed 99.0%;
- holding period of 10 days; and
- historical observation period of one year.

### Operational Risk Management

We define operational risk as the risk of loss that we may incur resulting from inadequate or failed internal processes, people and systems or from external events. We recognize that operational risk includes information technology risk, operations risk, legal risk, human resources risk, tangible asset risk, regulatory change risk and reputational risk. We have determined risk management policies concerning risk management structures and methods for each kind of risk. Mizuho Corporate Bank, Mizuho Bank, Mizuho Trust & Banking, Mizuho Securities, Mizuho Investors Securities and Trust & Custody Services Bank respectively manage operational risk in an appropriate manner pursuant to risk management policies determined by Mizuho Financial Group.

Mizuho Financial Group, Mizuho Corporate Bank, Mizuho Bank, Mizuho Trust & Banking, Mizuho Securities, Mizuho Investors Securities and Trust & Custody Services Bank share common rules for data gathering, and we measure operational risk on a regular basis, taking into account possible future loss events and the changes in the business environment and internal management.

We have established and are strengthening management methods and systems to appropriately identify, assess, measure, monitor and control the operational risks which arise from the growing sophistication and diversification of financial operations and developments relating to information technology by utilizing control self-assessments and improving measurement methods.

### ***Definition of Risks and Risk Management Methods***

As shown in the table below, we have defined each component of operational risk and we apply appropriate risk management methods in accordance with the scale and nature of each risk.

	<b>Definition</b>	<b>Principal Risk Management Methods</b>
Information Technology Risk	Risk that customers may suffer service disruptions, or that customers or the group may incur losses arising from system defects such as failures, faults, or incompleteness in computer operations, or illegal or unauthorized use of computer systems.	<ul style="list-style-type: none"><li>• Identify and evaluate the risk by setting specific standards that need to be complied with and implementing measures tailored based on evaluation results to reduce the risk.</li><li>• Ensure ongoing project management in systems development and quality control.</li><li>• Strengthen security to prevent information leaks.</li><li>• Improve effectiveness of emergency responses by improving backup systems and holding drills.</li></ul>
Operations Risk	Risk that customers may suffer service disruptions, as well as the risk that customers or the group may incur losses because senior executives or employees fail to fulfill their tasks properly, cause accidents or otherwise act improperly.	<ul style="list-style-type: none"><li>• Establish clearly defined procedures for handling operations.</li><li>• Periodically check the status of operational processes.</li><li>• Conduct training and development programs by headquarters.</li><li>• Introduce information technology, office automation and centralization for operations.</li><li>• Improve the effectiveness of emergency responses by holding drills.</li></ul>
Legal Risk	Risk that the group may incur losses due to violation of laws and regulations, breach of contract, entering into improper contracts or other legal factors.	<ul style="list-style-type: none"><li>• Review and confirm legal issues, including the legality of material decisions, agreements and external documents, etc.</li><li>• Collect and distribute legal information and conduct internal training programs.</li><li>• Analyze and manage issues related to lawsuits.</li></ul>
Human Resources Risk	Risk that the group may incur losses due to drain or loss of personnel, deterioration of morale, inadequate development of human resources, inappropriate working schedule, inappropriate working and safety environment, inequality or inequity in human resource management or discriminatory conduct.	<ul style="list-style-type: none"><li>• Conduct employee satisfaction surveys.</li><li>• Understand the status of vacation days taken by personnel.</li><li>• Understand the status of voluntary resignations.</li></ul>
Tangible Asset Risk	Risk that the group may incur losses from damage to tangible assets or a decline in the quality of working environment as a result of disasters, criminal actions or defects in asset maintenance.	<ul style="list-style-type: none"><li>• Manage the planning and implementation of construction projects related to the repair and replacement of facilities.</li><li>• Identify and evaluate the status of damage to tangible assets caused by natural disasters, etc., and respond appropriately to such damage.</li></ul>
Regulatory Change Risk	Risk that the group may incur losses due to changes in various regulations or systems, such as those related to law, taxation and accounting.	<ul style="list-style-type: none"><li>• Understand important changes in regulations or systems that have significant influence on our business operations or financial condition in a timely and accurate manner.</li><li>• Analyze degree of influence of regulatory changes and establish countermeasures.</li><li>• Continuously monitor our regulatory change risk management mentioned above.</li></ul>
Reputational Risk	Risk that the group may incur losses due to	<ul style="list-style-type: none"><li>• Establish framework to identify and</li></ul>

damage to our credibility or the value of the “Mizuho” brand when market participants or others learn about, or the media reports on, various adverse events, including actual materialization of risks or false rumors.

manage,

on an integrated basis, information that may have a serious impact on group management and respond to such risk in a manner appropriate to its scale and nature.

- Swiftly identify rumors and devise appropriate responses depending on the urgency and possible impact of the situation to minimize possible losses.

We also recognize and manage “Information Security Risk” and “Compliance Risk,” which constitute a combination of more than one of the above components of operational risk, as operational risk.

## ***Measurement of operational risk equivalent***

### ***Implementation of advanced measurement approaches***

We have been implementing the AMA from September 30, 2009, in place of the gross profit allocation approach (The Standardized Approach (TSA)) that we had been using previously, for the calculation of operational risk equivalent in association with capital adequacy ratios based on Basel II. However, we use the Basic Indicator Approach (BIA) for entities that are deemed to be less important in the measurement of operational risk equivalent and for entities that are preparing to implement the AMA. The measurement results under the AMA are used not only as the operational risk equivalent in the calculation of capital adequacy ratios but also as Operational VAR for internal risk management purposes for implementing action plans to reduce operational risk, etc.

### ***Outline of the AMA***

- Outline of measurement system

We have established the model by taking account of four elements: internal loss data; external loss data; scenario analysis and business environment; and internal control factors (BEICFs). A statistical approach (one year holding period / one-tailed 99.9 percentile confidence interval) is taken for the calculation of operational risk equivalent, employing both internal loss data (i.e., actually experienced operational loss events) and scenario data to reflect unexperienced potential future loss events in the measurement.

In the measurement of operational risk equivalent as of March 31, 2010, we did not exclude expected losses and also did not recognize the risk mitigating impact of insurance. In addition, we did not take into account the events related to credit risk in measuring operational risk equivalent.

- Outline of measurement model

Operational risk equivalent is calculated as a simple sum of those related to the seven loss event types defined by Basel II, large-scale natural disasters and litigation. In the measurement of operational risk equivalent as of March 31, 2010, we did not reflect the correlation effects among operational risk related to each of the seven loss event types.

- Operational risk by the loss event type

Loss Distribution (Compound Poisson Distribution) Approach (LDA) is adopted for the calculation of operational risk. LDA is based on the assumption that Poisson Distribution applies to the occurrence frequency of operational risk events, and loss severity is expressed through a separate distribution. Operational risk is calculated for each of the seven loss event types employing both internal loss data, based on our actual experience as operational loss events and scenario data. Scenario data, expressed as numerical values of occurrence frequency and loss severity, reflects external loss data and BEICFs, in order to estimate unexperienced potential future loss events (of low frequency and high severity).

“Frequency Distribution” and “Severity Distribution” are estimated employing the above mentioned internal loss data and scenario data, and Monte-Carlo simulations are then applied to these distributions to measure operational risk. The detailed steps of creation of scenario data are explained later in “(3) Scenario Analysis.”

- Estimation of “Frequency Distribution” and “Loss Severity Distribution”

“Frequency Distribution” is estimated by applying information on occurrence frequency of both internal loss data and scenario data to Poisson Distribution. “Loss Severity Distribution” is generated as the result of combining, through a statistical approach (Extreme Value Theory), of the actual distribution for the low severity distribution portion created by internal loss data and another loss distribution (Log-normal Distribution or Generalized Pareto Distribution) for the high severity distribution portion created by scenario data.

- Operational risk of large-scale natural disasters

Monte-Carlo simulation is applied to the datasets expressed as a combination of the probability of occurrence of large-scale natural disasters and the probable loss amount in case of such occurrence, as opposed to estimating “Frequency Distribution” and “Loss Severity Distribution.”

- Operational risk of litigation

Each litigation is converted into data according to the profile of the individual litigation to which Monte-Carlo simulation is applied, as opposed to estimating “Frequency Distribution” and “Loss Severity Distribution.” In the measurement process, we assume that final decisions will be made on all litigation within one year.

- Verification

We confirm the appropriateness of the measurement model by verifying it, in principle, semi-annually.



## Scenario analysis

- Outline of scenario analysis

In the process of scenario analysis, scenario data is created as numerical values of occurrence frequency and loss severity reflecting external loss data and BEICFs, in order to estimate unexperienced potential future operational risk events (of low frequency and high severity).

As for external loss data, we refer to data publicly reported by domestic and overseas media, and such data are reflected in the estimation of occurrence frequency and loss severity distribution in the process of scenario analysis. In addition, BEICFs are utilized as indices to adjust occurrence frequency and loss severity distribution in the process of scenario analysis.

We categorize scenario analyses into four approaches in accordance with the characteristics of each loss event type and risk management structures.

<u>Approach</u>	<u>Loss event type(s) to be applied</u>
A	Internal fraud / External fraud / Clients, products and business practices / Execution, delivery and process management
B	Employment practices and workplace safety
C	Damage to physical assets
D	Business disruption and system failure

At Mizuho Financial Group, loss event types to which Approach A is applied account for a considerable amount of operational risk. The detailed process of Approach A is explained below as a typical example of scenario analysis.

- Setting units for scenario analysis

In order to ensure completeness and sufficiency, we set units that are commonly applied across group entities that adopt AMA (the “Group Entities”) by referencing and categorizing risk scenarios recognized through control self-assessment, internal loss data of the Group Entities and external loss data, etc. Then each of the Group Entities selects the unit on which scenario analysis is conducted from the units established on a groupwide basis in accordance with its business activities and operational risk profile.

- Estimation of occurrence frequency

Basic occurrence frequency (once a year) is calculated for each scenario analysis unit. If a certain scenario analysis unit has relative internal loss data of a pre-determined threshold amount or above, its basic occurrence frequency is calculated based on such data, and if not, the basic occurrence frequency (the occurrence frequency per year of losses at or above a pre-determined threshold) is calculated with reference to the situation of occurrence of internal loss data of less than the threshold amount and/or external loss data. The basic occurrence frequency is then adjusted within a pre-determined range for the purpose of reflecting the most recent BEICF to determine the final occurrence frequency.

- Estimation of loss severity distribution

In order to estimate loss severity distribution, we use a pre-determined series of severity ranges. Basic loss severity distribution is calculated for each scenario analysis unit as an occurrence ratio (in percentile figures) of loss at each severity range when losses at or above a pre-determined threshold occurred, with reference to transaction amount data, external loss data, etc. Then the basic severity distribution is adjusted, if necessary, from the viewpoint of statistical data processing to determine the final loss severity distribution.

- Creation of scenario data

For each scenario analysis unit, scenario data is generated as a series of combinations of occurrence frequency per year at each severity range, based on the final occurrence frequency and the final loss severity distribution.