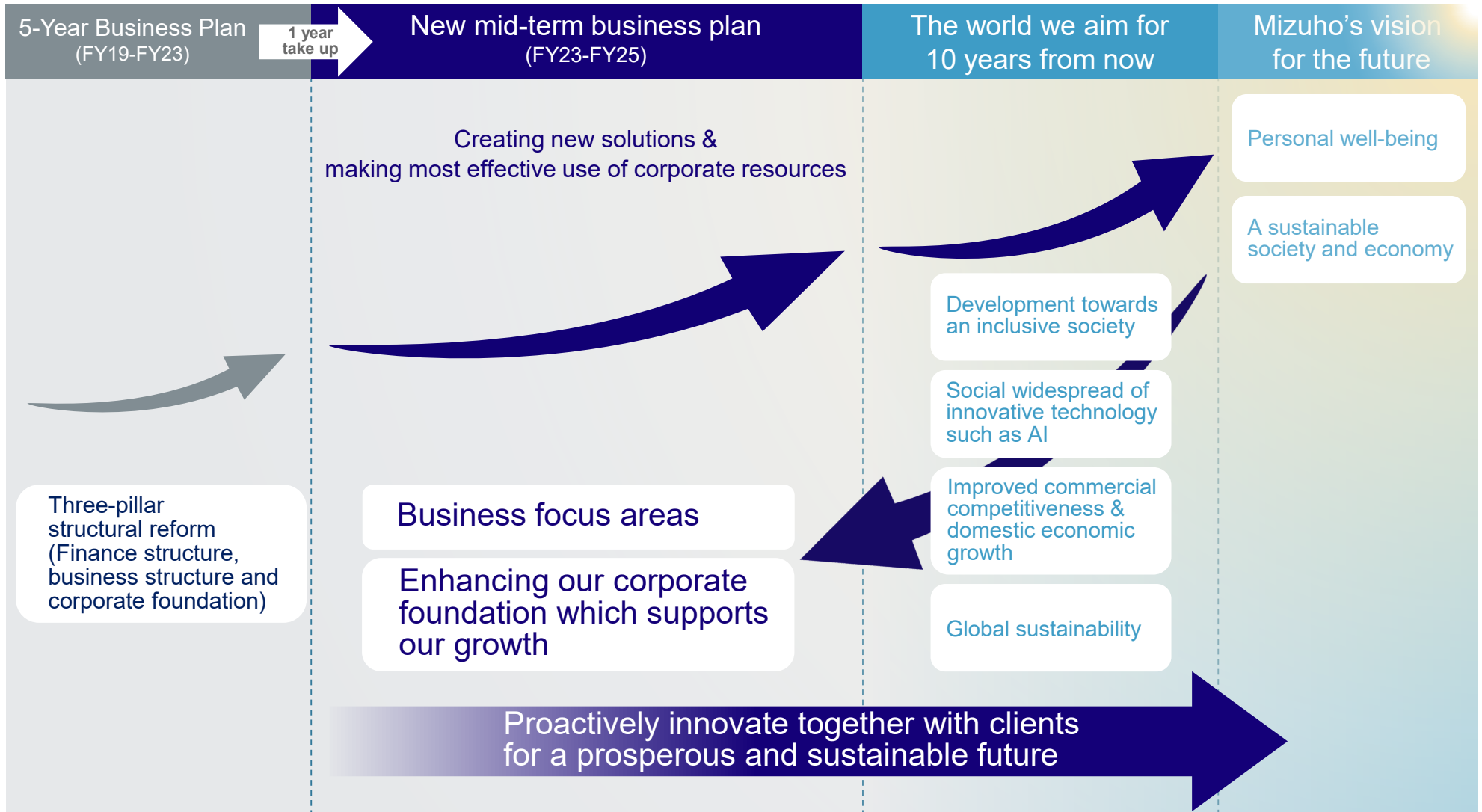


Position of the new medium-term business plan

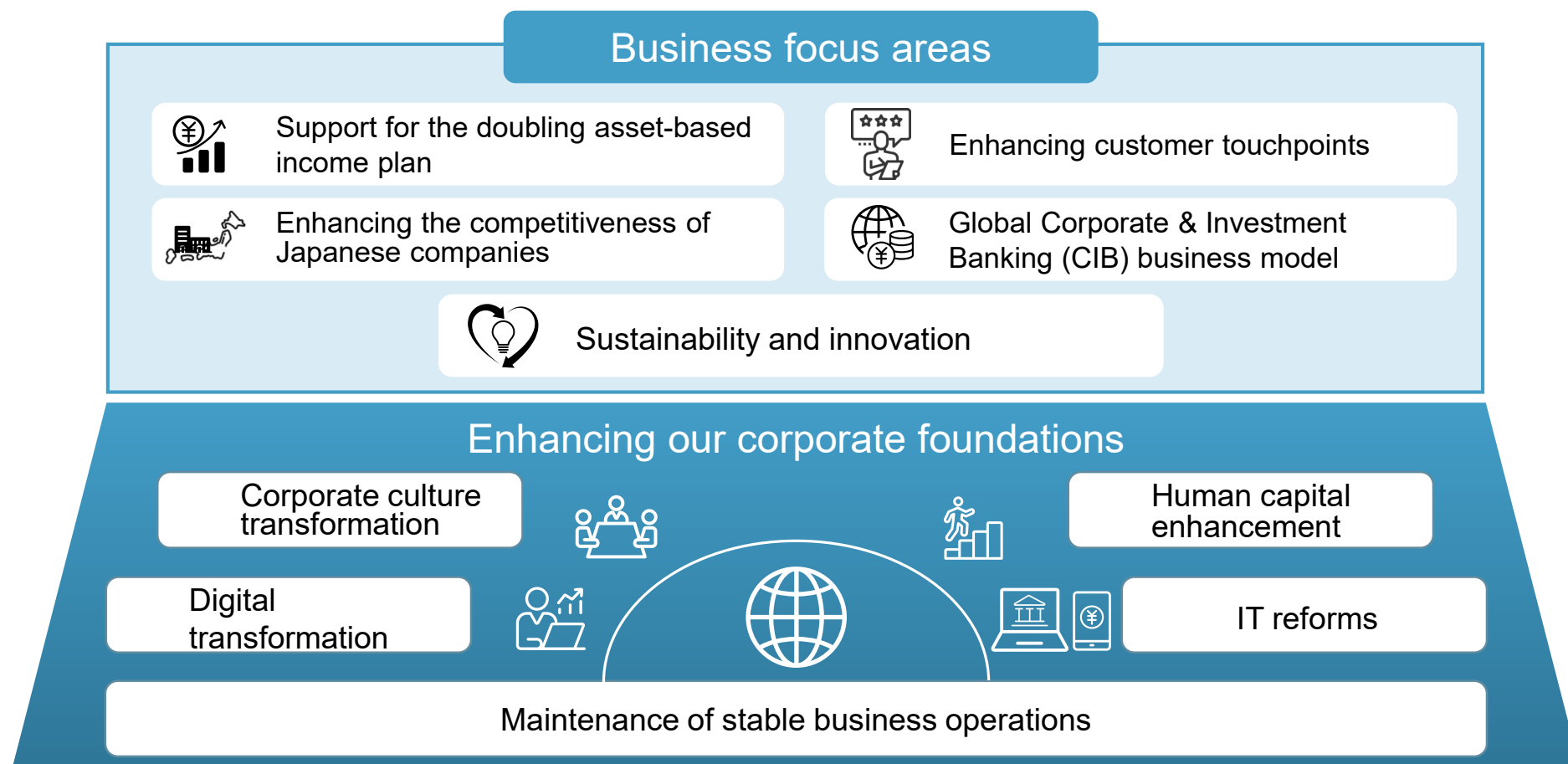
- Backcasting from our vision for the future, we have revised our Corporate Identity and launched the new medium-term business plan



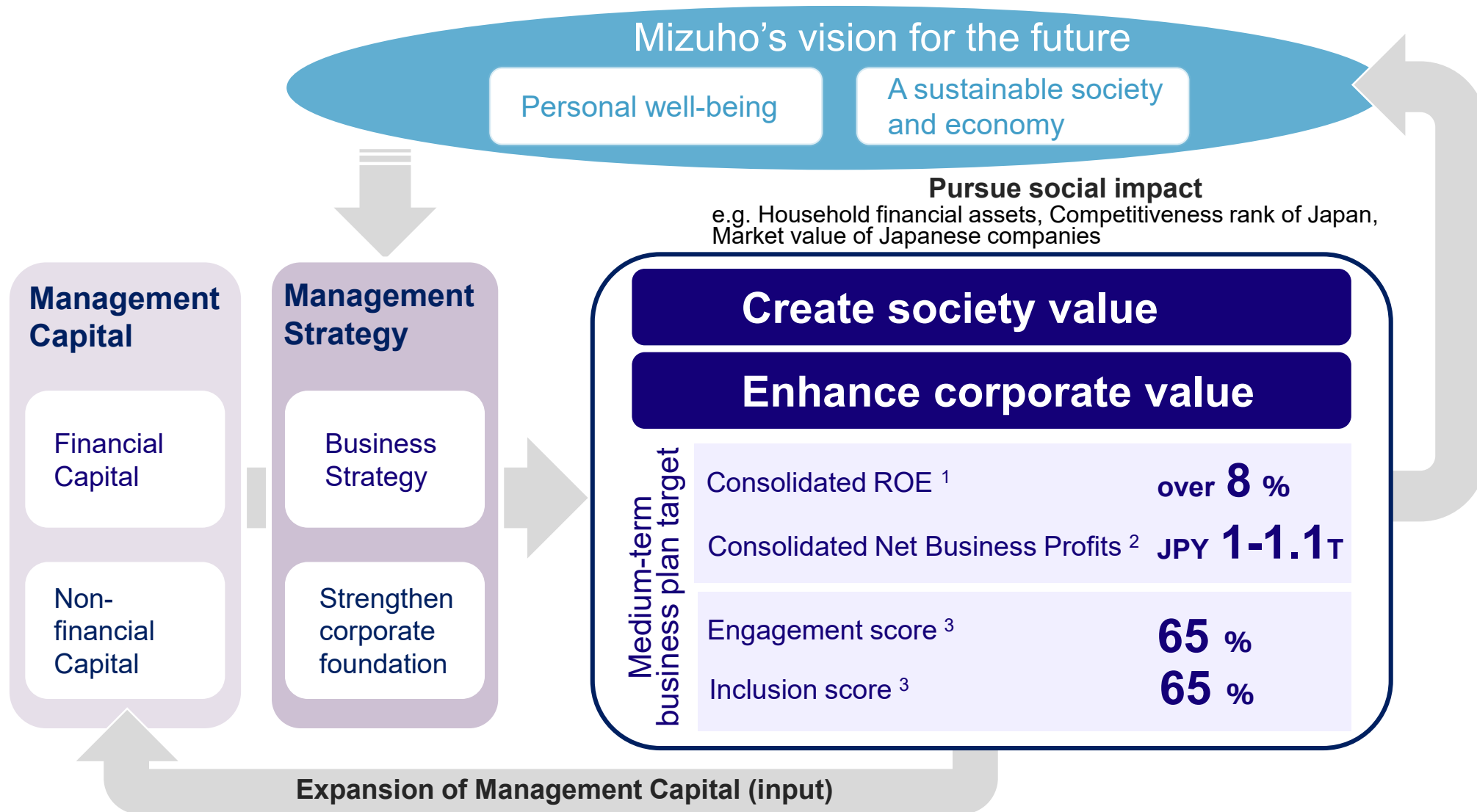
Basic policy of the new medium-term business plan

Three years of connecting the initiatives being carried out across Mizuho and creating new solutions to the challenges facing our clients and society as a whole

- Make the most effective use of corporate resources through a flexible business development approach
- Together with our clients and society, build the cornerstone of future sustainable growth and prosperity



The new medium-term business plan target



[Assumed financial indicators] JGB (10-yr): 0.95%, Nikkei 225: JPY 30,000, USD/JPY: JPY 120 (FY25)

1. Excl. Net Unrealized Gains (Losses) on Other Securities. 2. Consolidated Net Business Profits + Net Gains (Losses) related to ETFs and other. 3. Based on the positive response rate (selection of 4 or 5 on a scale from 1 to 5) for four Staff Survey questions related to engagement and inclusion