

Aug 13, 2024

Three Take-Aways

- 1) Fears look to be creeping in on recession risks and heat from geopolitical tensions.
- 2) Interventions in Chinese bond markets could cast a pall on market integrity, and further denting poor sentiments; possible downside surprise to industrial data on Thursday.
- 3) EM Asia FX benefitting from brief respite from JPY-funded carry unwind may not sustain outperformance.

MACRO THEME: Much To Fear?

- In the absence of any notable data releases or comments from officials, fear may be creeping in. Afterall, there is much to be wary of amid a rise in geopolitical tensions, coupled with creeping fears of recessions risk in the US. Brent crude surged +3.3% to >\$82/bbl as geopolitical tensions ratcheted-up. US shored up naval and air forces in the Middle East as Israel prepared for Iran's response (which Iran claimed will be "legitimate and resolute") to last month's assassination of a Hamas leader in Tehran. Meanwhile, Ukrainian President Zelenskiy publicly confirmed that his forces had seized a swathe of Russian territory.

- That sentiments were cautious was perhaps reflected in lower UST yields yet the DXY was broadly supported.

- Meanwhile, India's inflation eased below the central bank's target for the first time in nearly five years, though it is unlikely to spur interest rate cuts just yet as policymakers want to see a sustained decline in prices.

Yields (2Y: -3.7bps; 10Y: -3.6bps; 30Y: -1.8bps)

- Geopolitical tensions likely motivated a fall in UST yields in the absence of FedSpeak and any notable data releases.

Equities (Nasdaq: +0.2%; S&P500: +0.0%; Dow: -0.4%)

- Equities traded mixed across sectors.

FX (DXY: 0.0%)

- DXY was stable despite lower yields, which could point to some haven flows.

- NZD outperformed G10 peers ahead of its policy decision tomorrow. NZD has been recovering some strength in recent days, after soft inflation data in July saw the sell-off. The recovery is likely on the back of readjustments in rate cut bets an impending rate cut is not as clear-cut. While more than half of RBNZ shadow board supported a 25bps cut, the remainder recommend standing pat.

- JPY led losses as markets adjusted overzealous hawkish bets after ex-BoJ Board member ruled out another rate hike this year. USD/JPY briefly tested 148 before heading lower to 147 levels.

- EUR was buoyant above 1.09 handle, while AUD hovered above mid-65 cents. Meanwhile, USD/SGD range-traded above 1.32 levels.

China: Soft Sentiments

- Meanwhile, soft sentiments still abound in China, as evidenced in efforts by Chinese authorities to rein back the bond rally on financial stability concerns. Bond yields have been hitting new lows amid economic gloom and rate cut bets. While bond yields have started to climb in recent days in a sign that investors are finally taking heed of the warnings, such interventionist approaches could take a toll on market integrity. PBoC had used a quarterly monetary policy report last Friday to warn against the risks of what is considered a bond-market bubble.

- Going into data-heavy Thursday, July's disappointing export growth could foreshadow a downside surprise to industrial value added, although retail sales could accelerate aided by a slower decline in passenger vehicle sales.

IDR, PHP, MYR: Continued Outperformance?

- Even as bets on outsized Fed cuts dialled back, IDR and MYR were the EM Asia outperformers, gaining ~1.7% each while PHP gained ~1.4%.

- Part of IDR's and PHP's outperformance was likely a breather in "carry unwind". G10 carry currencies AUD, CAD which were also battered by JPY's recent surge, also gained to the tune of ~1% last week amid a more subdued JPY with BoJ alluded to a bail option on hikes, which ought to temper over-extended hawkish BoJ bets.

- In addition, data releases the past week were broadly supportive of a hold by BI and BSP. In particular, bets of BSP frontrunning the Fed should have been meaningfully lower with July inflation exceeding the target range, and BSP loosening its stance on the possibility of an August cut. Meanwhile, Indonesia's relatively circumspect view of Fed cuts would mean no cuts yet. But continued IDR and PHP outperformance may be a stretch for the following reasons.

- **First**, JPY strength is not exclusively within the BoJ's remit, and another sharp JPY squeeze will require that the Fed does not resort to drastic rate cuts, while recession fears have been mounting. Accordingly, sentiments are likely to be cautious and JPY-funded carry trades are unlikely to swing back in full traction.

- **Second**, sustained real-rate advantage may not be durable as cuts by EM Asia central banks are imminent. While the rather inconvenient July inflation is likely to have put off a BSP cut, BSP had alluded to the possibility of an off-cycle cut. Meanwhile, BI's policy setting is in part contingent on Fed policy, which it had expressly alluded to.

- In contrast, the MYR is on a relatively better standing, with monetary policy set on a prolonged hold amid stronger-than-expected economic growth and managed inflation even amid government reforms. Positive sentiments are also evidenced in recent high profile investments by MNCs, while efforts by government-linked companies cushion pressure on the MYR. Nonetheless, recent outperformance could see some profit-taking and some downside correction could be expected, especially as lingering CNY risks continue to drag EM Asia FX.

DATA/EVENTS

Overnight	Actual	Exp.	Prior
(IN) CPI YoY (Jul)	3.5%	3.6%	5.1%
(IN) Industrial Production YoY (Jul)	4.2%	5.4%	6.2%
Today			
(AU) Wage Price Index YoY (2Q)		4.1%	4.1%
(JP) Machine Tool Orders YoY (Jul P)		-	9.7%
(JP) PPI YoY (Jul)	3.0%	3.1%	2.9%
(GE) ZEW Survey Expectations (Aug)		-	41.8
(GE) ZEW Survey Current (Aug)		-	-68.9
(US) PPI Final Demand YoY (Jul)		-	2.6%
(US) PPI Ex Food, Energy YoY (Jul)		-	3.0%

FX OUTLOOK

FX	Close (NY)	Open*	Daily %Δ	Forecast
USDJPY	147.21	147.00	+0.41%	145.00 - 150.00
EURUSD	1.0931	1.0936	+0.13%	1.0890 - 1.0970
GBPUSD	1.2770	1.2770	+0.07%	1.2700 - 1.2830
AUDUSD	0.6586	0.6585	+0.12%	0.6510 - 0.6610
DXY	103.1	--	+0.00%	102.6 - 104.0
USDCNY	7.1747	--	+0.09%	7.1200 - 7.2000
USDCNH	7.1784	7.1781	+0.06%	7.1400 - 7.2000
USDHKD	7.7911	7.7922	▼0.08%	7.7800 - 7.8100
USDSGD	1.3243	1.3240	+0.03%	1.3200 - 1.3300
USDKRW	1370	1370	+0.00%	1350 - 1380
USDTWD	32.47	--	+0.11%	32.20 - 32.60
USDINR	83.97	--	+0.02%	83.85 - 84.10
USDIDR	15955	--	+0.19%	15800 - 16100
USDMYR	4.454	4.449	+0.68%	4.410 - 4.480
USDPHP	57.33	--	+0.07%	56.90 - 57.60
USDTHB	35.29	35.09	+0.00%	35.00 - 35.50
USDVND	25126	25119	+0.07%	25000 - 25200

*Open is as at 8am HKT/SGT.

MARKET MOVES

Bond Yields	2Y Close	10Y Close	2Y Δ (bps)	10Y Δ (bps)
UST (US)	4.018	3.905	-3.7	-3.6
JGB (JP)	0.283	0.844	0.0	0.0
Bunds (GE)	2.386	2.223	0.7	0.0
Gilts (UK)	3.629	3.915	-0.1	-2.8
AGB (AU)	3.790	4.048	1.1	-1.0
SGS (SG)	2.790	2.857	3.6	0.9
CGB (CN)	1.635	2.241	9.4	4.3
KGB (KR)	3.019	3.045	-1.8	-3.7
SDL (IN)	6.880	6.759	0.0	0.0

Cross FX	Close (NY)	Open*	Daily %Δ
EUR/JPY	160.91	160.75	+0.57%
GBP/JPY	187.976	187.713	+0.46%
JPY/SGD (100yen)	0.8996	0.9007	▼0.37%
JPY/HKD (100yen)	5.293	5.301	▼0.47%
CNH/JPY	20.53	20.488	+0.33%
CNH/HKD	1.0858	1.0861	▼0.18%
EUR/GBP	0.85629	0.85638	+0.09%
AUD/NZD	1.0944	1.0935	▼0.11%
EUR/CNH	7.8472	7.85	+0.18%
GBP/CNH	9.1643	9.1664	+0.06%

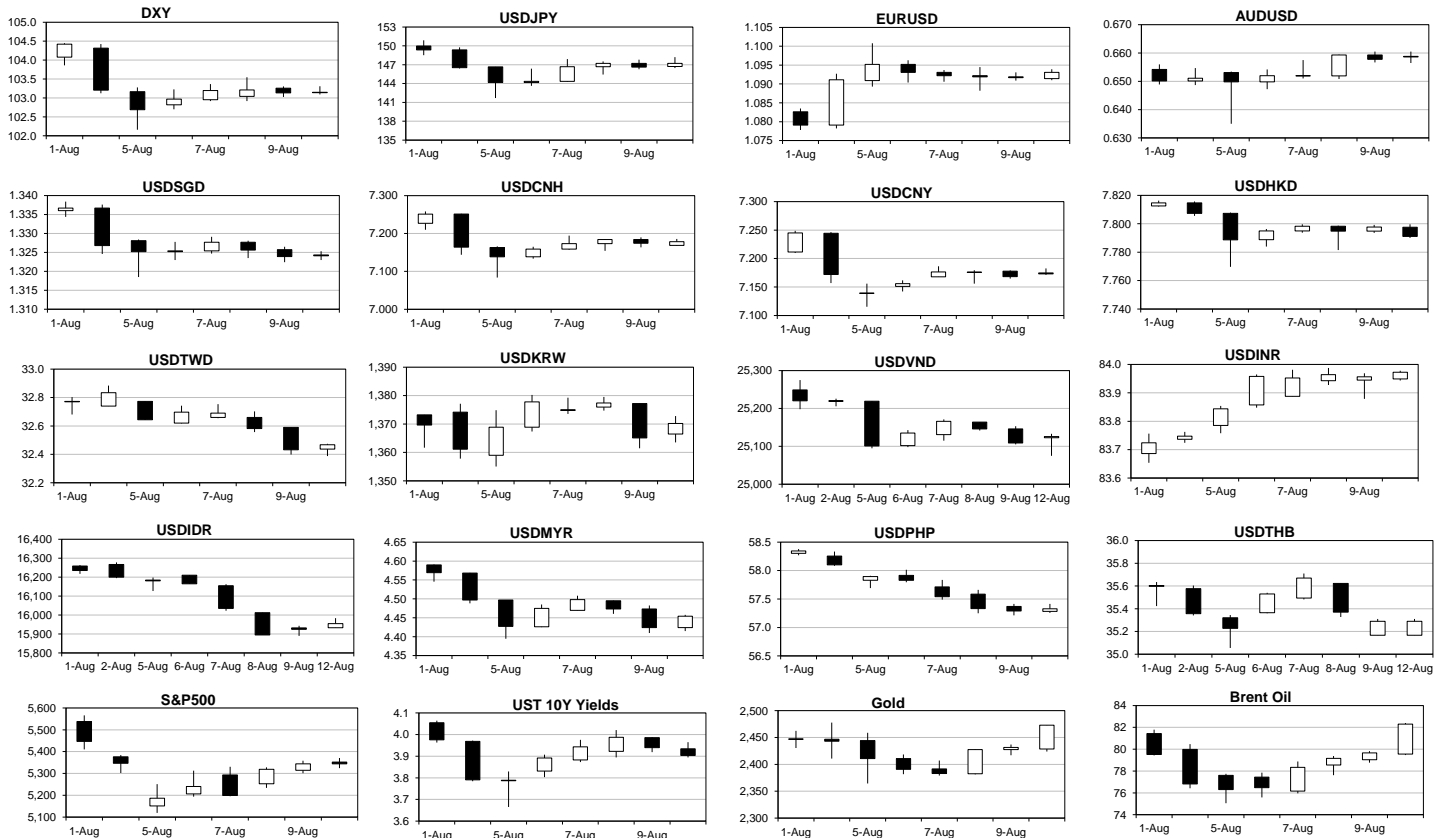
*Open is as at 8am HKT/SGT.

G3 Equities	Close	Net Chg	Daily %Δ
S&P500 (US)	5344.39	0.23	+0.00%
Nasdaq (US)	16780.61	35.31	+0.21%
DJIA (US)	39357.01	-140.53	▼0.36%
N225 (JP)	35025	0.00	+0.00%
STOXX50 (EU)	4671.88	-3.40	▼0.07%

Asia Equities	Close	Net Chg	Daily %Δ
ASX (AU)	4486.47	21.43	+0.48%
STI (SG)	3235.38	-26.45	▼0.81%
SHCOMP (CN)	2858.205	-3.99	▼0.14%
SZCOMP (CN)	1546.572	-7.36	▼0.47%
HSI (HK)	17111.65	21.42	+0.13%
SENSEX (IN)	79648.92	-56.99	▼0.07%
JSE (ID)	7297.625	40.63	+0.56%
KLSE (MY)	1606.66	10.61	+0.66%
PSE (PH)	6613.36	-34.44	▼0.52%
SET (TH)	1297.07	0.00	+0.00%
VNINDEX (VN)	1230.28	0.01	+0.54%

Commodity	Close	Net Chg	Daily %Δ
COPPER (LME)	8,908.18	160.90	+1.84%
IRON ORE (CN)	100.06	-3.65	▼1.41%
GOLD	2,472.90	41.58	+1.71%
SILVER	82.30	2.64	+3.31%
OIL (BRENT)	82	2.64	+3.31%
OIL (WTI)	80.06	3.22	+4.19%
NATURAL GAS	27.98	0.52	+1.89%

CHARTS



RESEARCH TEAM

Vishnu Varathan | Serena Zhou | Ken Cheung | Tan Boon Heng | Tan Jing Yi

MARKET COMMENTARY DISCLAIMER

THIS DOCUMENT IS NOT A RESEARCH REPORT AND IS NOT INTENDED AS SUCH.

Unless stated otherwise in the country specific distribution information below, this document has not been prepared in accordance with legal requirements in any country or jurisdiction designed to promote the independence of investment research and is not subject to any prohibition on dealing ahead of the dissemination of investment research. It is intended for informational purposes only and does not purport to make any investment recommendations.

This document has been prepared solely for the information of the intended recipients. Recipients in any jurisdiction should contact your usual Mizuho contact in relation to any matters arising from, or in connection, with this document.

This document has been prepared by Mizuho Bank, Ltd., Singapore Branch (“**MBSG**”), a full bank, exempt capital markets services entity and exempt financial adviser regulated by the Monetary Authority of Singapore (“**MAS**”), Mizuho Bank, Ltd., Hong Kong Branch (“**MBHK**”), a licensed bank regulated by the Hong Kong Monetary Authority, with business address at 12/F, K11 Atelier, 18 Salisbury Road, Tsim Sha Tsui, Kowloon, Hong Kong, Mizuho Bank, Ltd., Sydney Branch, an authorised deposit-taking institution regulated by the Australian Prudential Regulation Authority and holder of an Australian financial services licence (“**MBAU**”), Mizuho Securities Asia Limited (“**MHSA**”), licensed and regulated by the Hong Kong Securities and Futures Commission and/or Mizuho Securities (Singapore) Pte. Ltd. (“**MHSS**”), a holder of a capital markets services licence and an exempt financial adviser regulated by the MAS, as the case may be.

This does not constitute investment or personal advice.

This document has been prepared solely for the purpose of supplying general market information and/or commentary for general information purposes to clients of MBSG, MBHK, MBAU, MHSA, MHSS and their affiliates (collectively, “**Mizuho**”) to whom it is distributed, and does not take into account the specific investment objectives, financial situation or particular needs of any client or class of clients and it is not prepared for any client or class of clients.

This is not an offer or solicitation.

This document is not and should not be construed as an offer to buy or sell or solicitation to enter into any transaction or adopt any hedging, trading or investment strategy, in relation to any securities or other financial instruments.

Mizuho shall have no liability for contents.

This document has been prepared solely from publicly available information. Information contained herein and the data underlying it have been obtained from, or based upon, sources believed by Mizuho to be reliable, but no assurance can be given that the information, data or any computations based thereon are accurate or complete and Mizuho has not independently verified such information and data. Mizuho is not obliged to update any of the information and data contained in this document.

Mizuho makes no representation or warranty of any kind, express, implied or statutory, regarding, but not limited to, the accuracy of this document or the completeness of any information contained or referred to in this document. Mizuho accepts no liability and will not be liable for any loss or damage arising directly or indirectly (including special, incidental or consequential loss or damage) arising from or in connection with any person’s use or reliance of this document or the information contained in this document.

Information contained herein is no indication of future performance.

Some of the statements contained in this document may be considered forward-looking statements which provide current expectations or forecasts of future events.

Any opinions, projections, forecasts and estimates expressed in the document are solely those of Mizuho based on factors it considers relevant as at the date of the document and are subject to change without notice. Past performance is not indicative of future performance. Consequently, no expressed or implied warranty can be made regarding the projections and forecasts of future performance stated therein.

This material is confidential.

This document is intended for the exclusive use by the recipients, and is provided with the express understanding that the information contained herein will be regarded and treated as strictly confidential. All recipients may not reproduce or use this document in whole or in part, for any other purpose, nor disclose, furnish nor distribute this document to any other persons without the prior written permission of Mizuho. Any such reproduction, use, delivery or distribution in form or to any jurisdiction may be effected only in accordance with all applicable laws and regulations in the relevant jurisdiction(s).

Disclosure regarding potential conflicts of interest.

Mizuho, its connected companies, employees or clients may at any time, to the extent permitted by applicable law and/or regulation, take the other side of any order by you, enter into transactions contrary to any recommendations contained herein or have positions or make markets or act as principal or agent in transactions in any securities mentioned herein or derivative transactions relating thereto or perform or seek financial or advisory services for the issuers of those securities or financial instruments referred therein. Accordingly, Mizuho, its connected companies or employees may have a conflict of interest that could affect the objectivity of this document. This document has been prepared by employees who may interact with Mizuho’s trading desks, sales and other related personnel when forming the views and contents contained within.

Financial instruments may not be for sale to all categories of investors.

There are risks associated with the financial instruments and transactions referred to in this document. Investors should not rely on any contents of this document in making any investment decisions and should consult their own financial, legal, accounting and tax advisors about the risks, the appropriate tools to analyse an investment and the suitability of an investment in their particular circumstances. Mizuho is not responsible for assessing the suitability of any investment. Investment decisions and the responsibility for any investments are the sole responsibility of the investor. Neither Mizuho nor of its directors, employees or agents accepts any liability whatsoever with respect to the use of this document or its contents.

WARNING: THE CONTENTS OF THIS DOCUMENT HAVE NOT BEEN REVIEWED BY ANY REGULATORY AUTHORITY. YOU ARE ADVISED TO EXERCISE CAUTION IN RELATION TO SUCH CONTENTS. THIS DOCUMENT IS NOT INTENDED TO CONSTITUTE ANY INVESTMENT, LEGAL, FINANCIAL, BUSINESS, ACCOUNTING, TAXATION OR OTHER ADVICE. IF YOU ARE IN ANY DOUBT AS TO THE ACTION YOU SHOULD TAKE, YOU SHOULD SEEK PROFESSIONAL ADVICE FROM YOUR RELEVANT ADVISERS ABOUT YOUR PARTICULAR CIRCUMSTANCES. YOU ARE RESPONSIBLE FOR YOUR OWN INVESTMENT CHOICES.

This document is not directed to, or intended for distribution to or use by, any person who is a citizen or resident of, or entity located in, any locality, territory, state, country or other jurisdiction where such distribution, publication, availability or use would be contrary to or restricted by law or regulation. Persons or entities into whose possession this document comes should inform themselves about and observe such restrictions.

COUNTRY SPECIFIC DISTRIBUTION INFORMATION

Australia: This document is intended only for persons who are sophisticated or professional investors for the purposes of section 708 of the *Corporation Act 2001* (Cth) of Australia (“**Corporations Act**”), or “wholesale clients” for the purpose of section 761G of the *Corporations Act*. It is not intended for and should not be passed on, directly or indirectly, to other classes of persons/investors in Australia. In Australia, Mizuho Bank, Ltd. Sydney Branch (“**MBSO**”) is an authorised deposit-taking institution regulated by the Australian Prudential Regulation Authority in accordance with the *Banking Act 1959* (Cth), and holds an Australian financial services licence number 231240 (**AFSL**). Mizuho Securities Asia Limited (ABRN 603425912) and Mizuho Securities (Singapore) Pte. Ltd. (ARBN 132105545) are registered foreign companies in Australia and are each exempt from the requirement to hold an AFSL under the *ASIC Corporations (Repeal and Transitional) Instrument 2023/588*. MHSA is licensed by the Hong Kong Securities and Futures Commission under Hong Kong laws and MHSS is licensed by the Monetary Authority of Singapore under Singapore laws, which laws differ from Australian laws respectively.

Costa Rica: Nothing in this document constitutes a representation that any investment strategy or recommendation contained herein is suitable or appropriate to a recipient’s individual circumstances or otherwise constitutes a personal recommendation. This document is published solely for information purposes, it does not constitute an advertisement and is not to be construed as a solicitation or an offer to buy or sell any securities or related financial instruments. In accordance with local laws, it does not constitute a public offering of securities under Regulations for Public Offering of Securities (National Counsel of Financial System Supervision, article 11 of Session Act 571-2006), and therefore cannot be understood and interpreted as an implicit or explicit offering that intends to place, issue, negotiate or trade securities transmitted by any means to the public or to certain groups. This document will not be disclosed to groups of more than 50 investors.

Guatemala: This document does not constitute an offering under the rules of the Ley del Mercado de Valores y Mercancías (Stock Exchange Act, Decree 34-96 of the Congress of the Republic of Guatemala), and any of its amendments, including without limitation, Decree 49-2008 of the Congress of the Republic of Guatemala, and its applicable regulation (Governmental Accord 557-97). The document will not be registered for public offering with the Securities Market Registry of Guatemala (Registro del Mercado de Valores y Mercancías), because the products will not be offered or sold: (1) to any person in an open market, directly or indirectly, by means of mass communication; (2) through a third party or intermediary to any individual person or entity that is considered an institutional investor, including entities that are under the supervision of the Guatemalan Superintendency of Banks (Superintendencia de Bancos), the Guatemalan banking regulator, the Guatemalan Social Security Institute (Instituto Guatemalteco de Seguridad Social) and its affiliates; (3) through a third party or intermediary to any entity or vehicle used for purposes of collective investment; or (4) to more than 35 individual persons or entities.

Hong Kong: This document, when distributed in Hong Kong (“**HK**”), is distributed by MHSA or MBHK, depending of the Mizuho entity which you are a client of.

Japan: This document is intended only for certain categories of persons to whom a foreign securities broker is allowed to carry out regulated activities under the relevant articles of the Financial Instruments and Exchange Act (the “Act”) and the subordinate legislative instruments (as amended), including but not limited to Financial Services Providers who are engaged in an Investment Management and certain Financial Institutions subject to conditions and limitations in Article 17-3(i) of the Order for Enforcement of the Act. It is solely for the use of such investors and shall not be distributed, forwarded, passed on or disseminated to any other person. This document is solely for the purpose of supplying general information and shall not constitute any investment or financial advice in relation to any products or services.

Malaysia: These documents shall be distributed solely to existing subscribers or clients of Mizuho Securities, and do not constitute an invitation, offer, or recommendation to subscribe for or purchase any securities mentioned therein. These materials also do not, whether directly or indirectly, refer to a prospectus in respect of securities of a corporation; in the case of a unit trust scheme or prescribed investment scheme, a prospectus in respect of any unit of the unit trust scheme or prescribed investment scheme, as the case may be; an issue, intended issue, offer, intended offer, invitation or intended invitation in respect of securities; or another notice that refers to a prospectus in relation to an issue, intended issue, offer, intended offer, invitation or intended invitation in respect of securities. Whilst there may be statements concerning securities and/or derivatives of a certain corporation or entity in these materials, we wish to highlight that these do not constitute, whether directly or indirectly, any form of advice, recommendation, encouragement, promotion, analysis, report or inducement to take any action, i.e., to buy, sell, or hold any securities and/or derivatives, nor is it a form of inducement for the reader to take any position regarding a particular class, sector, or instrument in relation to the securities and/or derivatives so mentioned.

New Zealand: This document is intended only for persons who are “wholesale investors” and “wholesale clients” under the Financial Markets Conduct Act 2013 (“FMCA”), as persons who are an “investment business”, meet relevant investment activity criteria, are “large” or are a “government agency”, in each case within the meaning of clauses 37 to 40 of Schedule 1 of the FMCA. It is not intended for, and should not be reproduced or distributed in any form to any other person in New Zealand. This document is distributed in New Zealand by MHSA or MHSS, which are licensed in their respective jurisdictions but are not registered as overseas companies or financial service providers in New Zealand or licensed under the FMCA. Nothing in this document constitutes or is supplied in connection with a regulated offer nor an offer to the public within the meaning of the FMCA.

Singapore: This document is distributed in Singapore by MBSG or MHSS, a holder of a capital markets services licence and an exempt financial adviser regulated by the MAS. Nothing in this document shall be construed as a recommendation, advertisement or advice to transact in any investment product mentioned herein. Where the materials may contain a recommendation or opinion concerning an investment product, MHSS is exempted from complying with sections 34, 36 and 45 of the Financial Advisers Act 2001 of Singapore. This document is only intended for distribution to “institutional investors”, “accredited investors” or “expert investors”, as defined under the Financial Advisers Regulations, and is solely for the use of such investors. It shall not be distributed, forwarded, passed or disseminated to any other person.

South Korea: This document is distributed in South Korea by Mizuho Securities Asia Limited, Seoul branch solely acting as a broker of debt securities under the Korea Financial Investment Services and Capital Markets Act.

Switzerland: This document is not intended to be relied upon as a forecast, research or investment advice, and is not a recommendation, offer or solicitation to buy or sell any financial instrument or to adopt any investment strategy mentioned in this document. The information contained on this document shall not be construed to be an advertisement for any of the financial instruments or services mentioned herein.

Taiwan: This document distributed via MHSA or MHSS from outside Taiwan shall not be re-distributed within Taiwan and does not constitute recommendation of, and may not be used as a basis for recommendation of, securities within Taiwan. This document may not be distributed to the public media or used by the public media without prior written consent of MHSA or MHSS (as the case may be).

Thailand: This document does not constitute any investment or financial advice or any general advice in relation to any products or services and, when distributed in Thailand, is intended only for “institutional investors”, as defined in the Notification of the Office of the Securities and Exchange Commission No. Gor Thor. 1/2560 Re: Provision of Advice to the Public which is not classified as the undertaking of Investment Advisory Business dated 12 January 2017 (as amended). It is solely for the use of such investors and shall not be distributed, forwarded, passed on or disseminated to any other person. The distribution of this document to such institutional investors in Thailand, is solely for the purpose of supplying general information, without charge. It neither constitutes any intention to conduct, or any engagement in any securities business, service business, investment or financial advisory business, or any other business in Thailand, for which Thai licensing is required, nor marketing, offering, solicitation or sale of any products, securities, or services to customers, potential customers or any person in Thailand.

United Arab Emirates (excluding the Dubai International Financial Centre and the Abu Dhabi Global Market): This document is intended only for persons who qualify as professional investors as defined in the Securities and Commodities Authority (“SCA”) Rulebook. It is not intended for or should not be passed on, directly or indirectly, to other classes of persons/investors in the United Arab Emirates. The contents of this document have not been reviewed or approved by, or deposited with, the Central Bank of the United Arab Emirates, SCA or any other regulatory authority in the United Arab Emirates. If you do not understand the contents of this document you should consult an authorised financial adviser.

United Kingdom / Germany / European Economic Area: This document is being distributed in the United Kingdom by Mizuho International plc (“MHI”), 30 Old Bailey, London EC4M 7AU. MHI is authorised by the Prudential Regulation Authority and regulated by the Financial Conduct Authority and the Prudential Regulation Authority and is a member of the London Stock Exchange. This document may be distributed in the European Economic Area by MHI or Mizuho Securities Europe GmbH (“MHEU”), Taunustor 1, 60310 Frankfurt, Germany. MHEU is authorised and regulated by the Bundesanstalt für Finanzdienstleistungsaufsicht (“BaFin”). For the avoidance of doubt this report is not intended for persons who are Retail Clients within the meaning of the FCA’s or the BaFin’s rules. Details of organizational and administrative controls for the prevention and avoidance of conflicts of interest can be found at <https://www.mizuhoemea.com>.

United States: This document is being distributed in the United States by Mizuho Securities USA LLC (“MSUSA”) and is the responsibility of MSUSA. The content of publications distributed directly to US customers by non-US members of Mizuho Securities is the responsibility of such member of Mizuho Securities which distributed it. US investors must affect any order for a security that is the subject of this document through MSUSA. For more information, or to place an order for a security, please contact your MSUSA representative by telephone at 1-212-209-9300 or by mail at 1271 Avenue of the Americas, New York, NY 10020, USA. MSUSA acts as agent for non-US members of Mizuho Securities for transactions by US investors in foreign sovereign and corporate debt securities and related instruments. MSUSA does not guarantee such transactions or participate in the settlement process.

© Mizuho Bank, Ltd. (“MHBK”), MHSA and MHSS. All Rights Reserved. This document may not be altered, reproduced, disclosed or redistributed, or passed on to any other party, in whole or in part, and no commercial use or benefit may be derived from this document without the prior written consent of MHBK, MHSA or MHSS.